

Partnership Working Within Warwickshire



Kate Nash, Warwickshire County Council

Supt. Andy Johnson, Warwickshire Police

Keith Newell, Rugby Borough Council

Julie Sullivan, Warwickshire County Council

Nick Gower-Johnson, Warwickshire County Council

Carl Thompson, Warwickshire Police Analyst

Objectives

- **To provide delegates with an understanding of partnership working within Warwickshire**
- **To give delegates the opportunity to assess their own partnership working and identify ways to build on their existing processes**

‘Protecting Our Communities Together’

- **Single vision**
- **Strong leadership**
- **All signed up**
- **Fully embedded**
- **The ‘harms’**
- **The vision as an enabler**
- **The vision and the LAA**
- **The vision and the PSB**

Relationships

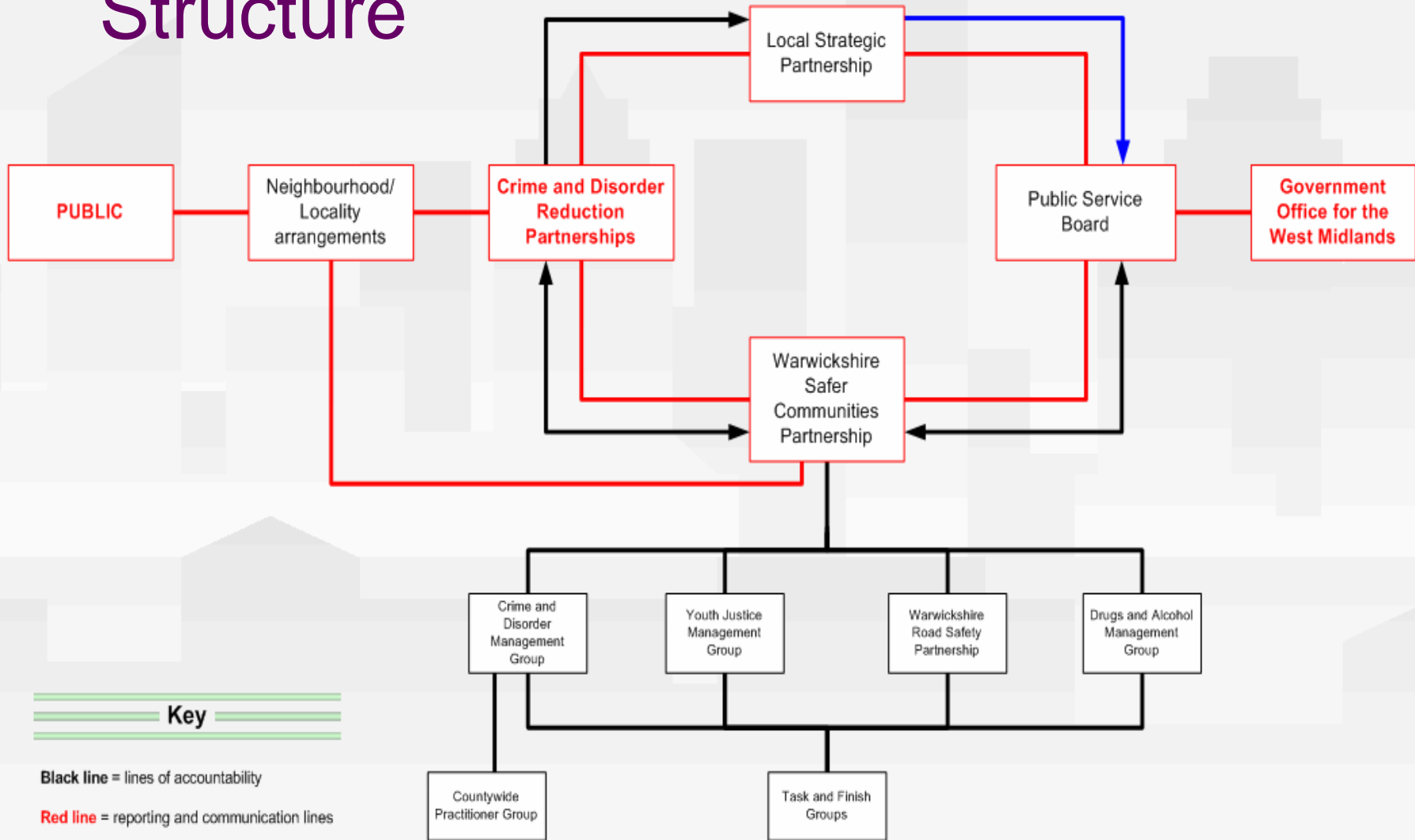
- **New leadership**
- **Key qualities**
 - openness, trust, honesty, compromise
- **Culture change**
- **Communication**
- **Courage**
- **Persistence**
- **Mutual accountability**

Strategy

- **Strategic assessment commonality**
- **Shared priorities**
- **Shared targets**
- **Enshrined in LAA and local plans**
- **Shared resources**
- **Pooled funding (ABG & BCU)**
- **Co-location**

Safer Block Governance Model

Structure



QUESTIONS?

Successes to date

- **Locality working**
- **Anti-social behaviour**
- **Domestic abuse**
- **Harm Causers (HC)**
- **Family Centred Intervention (FCI)**

Locality Working (1)

- **Giving local people and communities an improved opportunity to tell us their priorities**
- **Localising service delivery and using the public's money more effectively**
- **Joining up service delivery at a local level**
- **Narrowing the Gaps**
- **Improving public sector engagement with local people and communities**
- **Short sharp plans/ sledges & a distinct service offer for each locality**

Locality Working (2)

- **23 localities across the county**
- **Supported by 30 Community Forums**
- **Arrangements agreed by County Council, Police, Police Authority and Parish / Town Councils**
- **Full integration of the Safer Neighbourhoods Panels / PACTs**
- **Locality 'planning' at its early stages**
- **Achievement and communication about local priorities**
- **Growing levels of support from councillors and others**

QUESTIONS?

Anti social behaviour

- County Level

- **Definition**
- **Key principles**
 - Prevent, decriminalise but if necessary
- **Interventions**
 - Proportionate, parenting, community & environment, alcohol & drugs, prevention/diversion, enforcement
- **Documentation**
 - Formats

Anti social behaviour

- Local level

- **Case management group**
- **Tasking and coordination**
- **POP / area specific / You say we**

QUESTIONS?

Domestic Abuse

- **Talk2someone.org.uk**
- **Signposting and promotion**
- **Simple navigation**
- **Different audiences**
- **Joint agency working**
- **Single site for all statutory agencies**
- **Meets national, local and partnership plans**

QUESTIONS?

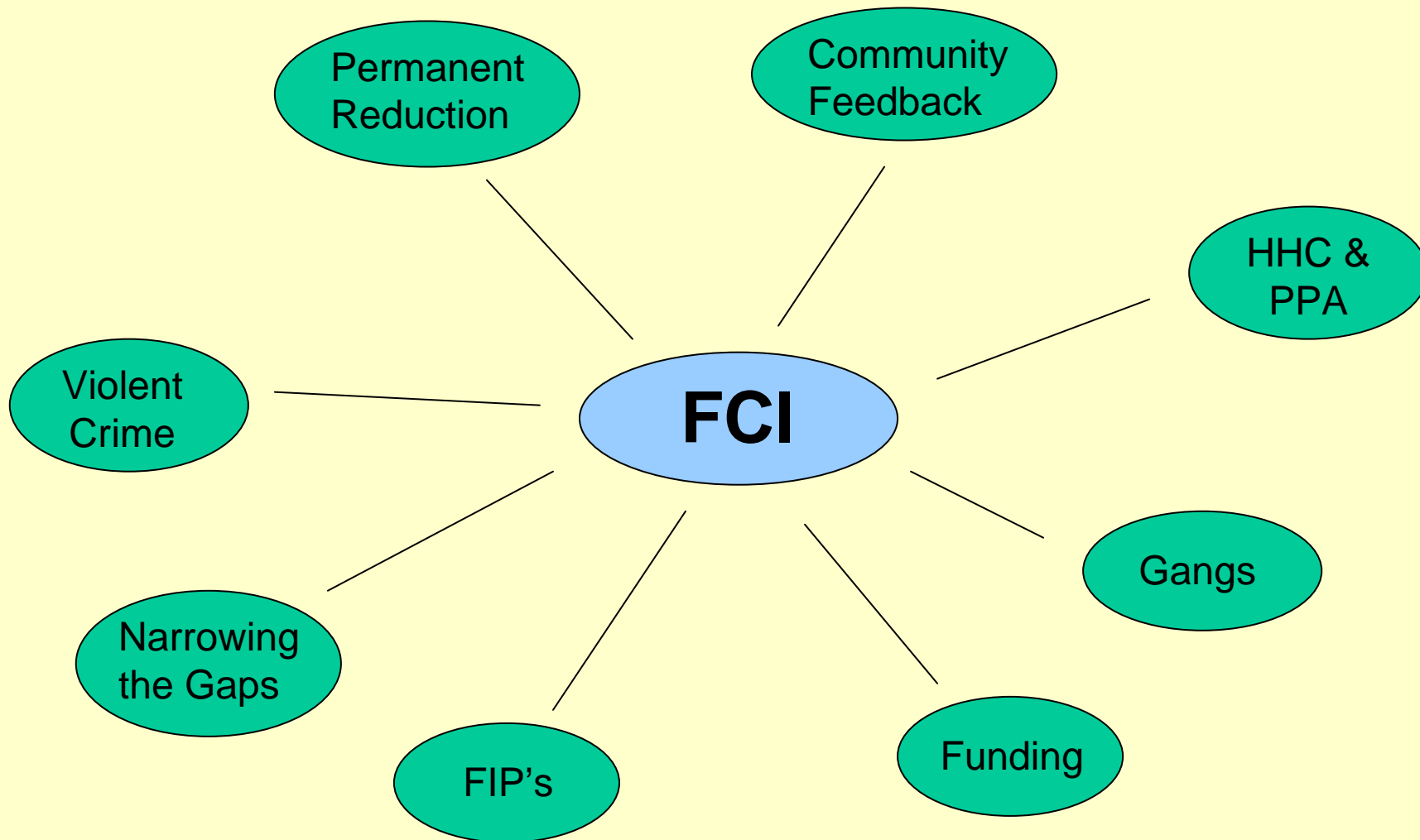
Harm Causers

- **Harm assessment matrix**
- **Individual ownership**
- **Sustained intervention**
- **Gang intervention (Tiered Approach)**
- **Priority Policing Areas (PPA)**
- **Family Centred Intervention**

QUESTIONS?

Family Centred Intervention

- Why did it happen?



Family Centred Intervention

- **Single joined up delivery of services**
- **Families most in need of intervention**
- **Break family cycle of crime, health, education etc**
- **County / local dimensions**
- **Mainstreaming**

QUESTIONS?

Challenges

- **Public confidence**
- **Culture gap**
- **Engaging all communities**
- **Sustainability**

QUESTIONS?

Afternoon Workshops

- 1) Locality Working**
- 2) The Strategic Assessment Process**
- 3) The Confidence Agenda**
- 4) Family Centred Intervention**

Locality Working

– Current challenges for us

- **Communications**
- **Broadening the community engagement**
 - Who is attending the forums
 - Attendance levels
 - Alternative methods of engagement
 - Role of voluntary and community sector organisations
- **Elected member engagement**
- **Delegation of grants funding to the forums**
- **Taking forward locality plans / pledges**

Locality Working - Questions

- 1) **How do you currently engage with your local communities?**
- 2) **Is this as effective as it could be?**
- 3) **How could your community engagement be improved?**
- 4) **Is the Warwickshire model of use to you?**
- 5) **What would be the main challenges in introducing arrangements like this?**
- 6) **How could these be overcome?**

Strategic Assessments

- The Warwickshire Approach

- *Purpose*
- *Collection Plan & Consultation*
- *The Assessment*
- *Priorities*
- *Debrief*

Strategic Assessments - Questions

- **Jointly with police or partnership alone?**
- **Data sets**
 - How wide are they?
 - Do we understand what they tell us?
- **Community views**
 - How recent?
 - How diverse?
- **Priority selection**
 - Rank by volume or risk and threat matrices, OR???
- **Two tier**
 - Does escalation work?
- **Hallmarks**
 - Was any leverage needed?
 - Did your review deliver it?

The Confidence Agenda

- **An issue for Warwickshire**
- **39th nationally**
- **Priority this year, but not last due to falling crime**
- **Emerged on this year's strategic assessment**
- **Police Confidence Board**
- **Multi agency group**
- **Agreed strategy**

Confidence Agenda - Questions

- 1) What is your organisation doing with regards to the Confidence Agenda?**
- 2) What partnership work are you undertaking in support of the Confidence Agenda?**
- 3) What strengths and barriers are you encountering?**

Family Centred Intervention

- **Agreement to focus on at risk families**
- **Safer Block and Children's Trust working together – whole family approach**
- **Best practice from FIPs**
- **Value for Money and savings**
- **Outcome focussed for individuals, families, community and society**
- **Preventative approach**

Family Centred Intervention

- Questions

- 1) What is the current strategic approach, across agencies, on this issue?**
- 2) What do you feel agencies need to do to improve this partnership working?**
- 3) What structures and processes could agencies implement in partnership to focus on improving outcomes for families?**

Contacts:

- andy.johnson@warwickshire.pnn.police.uk
- katenash@warwickshire.gov.uk
- juliesullivan@warwickshire.gov.uk
- keith.Newell@rugby.gov.uk
- nickgower-johnson@warwickshire.gov.uk
- cthompson@warwickshire.pnn.police.uk