



Home Office

Crime and Policing Group

Who Shares, Wins

Partnership Development Unit
Verity Ridgman

23 February 2010



Crime and Disorder Act 1998

115 Disclosure of information

(1) Any person who, apart from this subsection, would not have power to disclose information—

(a) to a relevant authority;* or

(b) to a person acting on behalf of such an authority,

shall have **power** to do so in any case where the disclosure is necessary or expedient for the purposes of any provision of this Act.

*The relevant authorities being police, police authority, local authority, health authority, and probation committee.

Police Reform Act 2002 adds fire authorities and Primary Care Trusts to the list of relevant authorities.

Police and Justice Act 2006

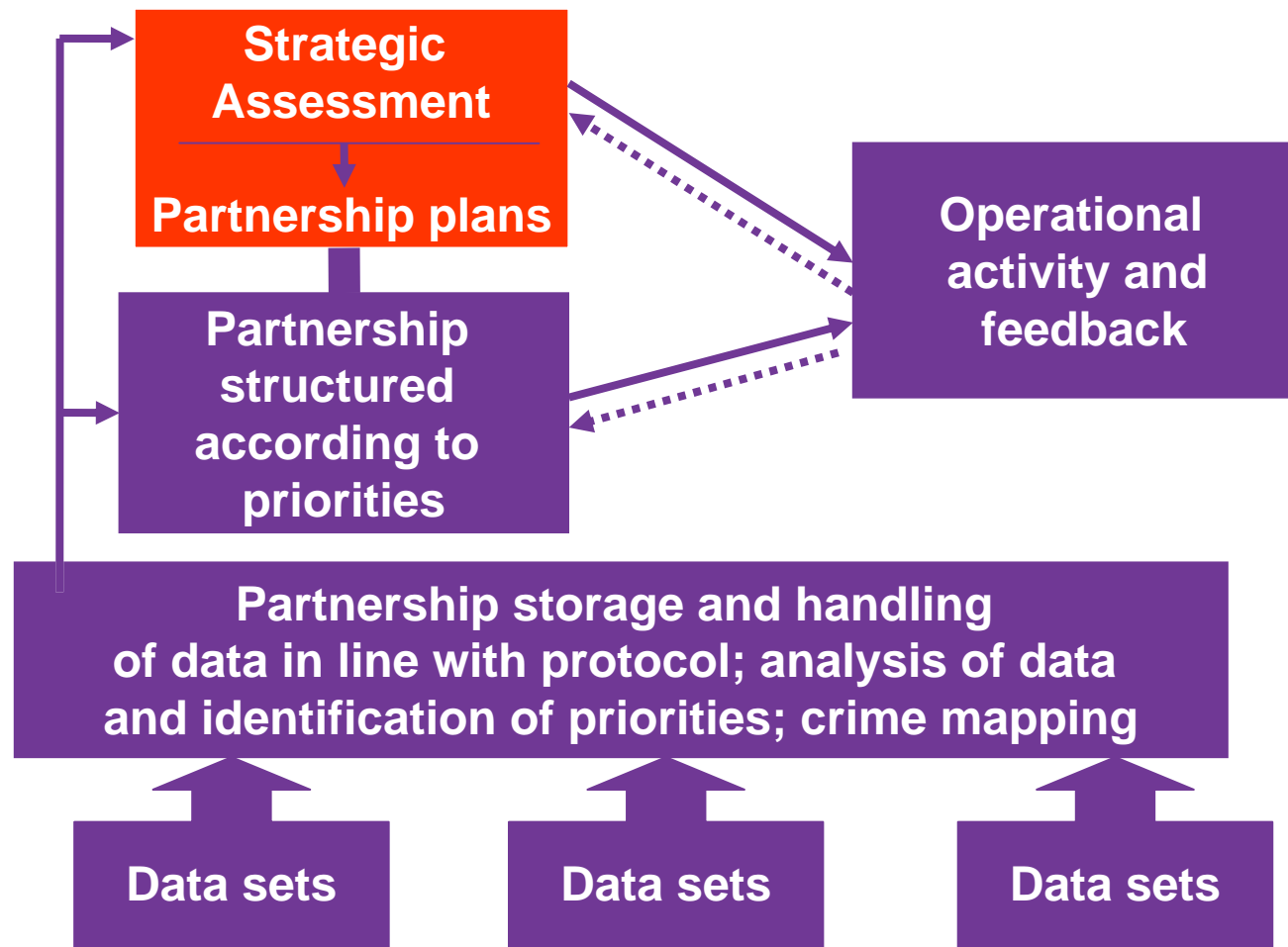
Sharing of information

(1) A relevant authority is under a **duty** to disclose to all other relevant authorities any information held by the authority which is of a prescribed description, at such intervals and in such form as may be prescribed.

(2) In subsection (1) “prescribed” means prescribed in regulations made by the Secretary of State.

The Crime and Disorder (Prescribed Information) Regulations 2007 set out the minimum list of datasets required to be shared.

Intelligence-led business processes



Forthcoming guidance:

Information Sharing for Community Safety

- commissioned from Jill Dando Institute, authored by Spencer Chainey
- link to information-sharing protocol developed by the North East
- advice for managers of analysts
- legislation applicable to information sharing
- geographic referencing on records
- sanitising geographic information and records . . .
- . . . and much, much more

Coming in March

Swansea: Extending the links

Context

- creative police analyst
- strong partnership brand that agencies rally round
- good operational links . . . **but**
- significant areas of deprivation
- culture of excessive alcohol consumption
- high-level of drug-related deaths



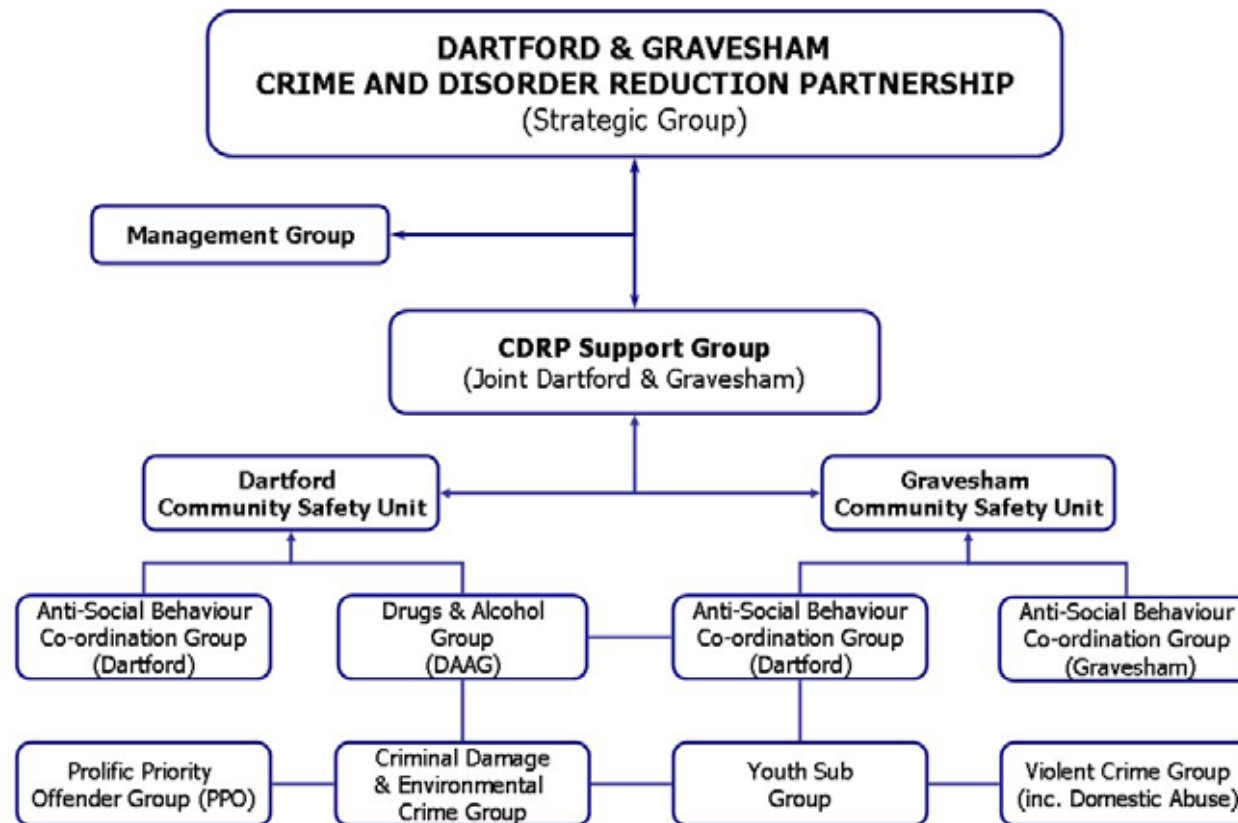
Swansea: Tackling Families

The Common Assessment Framework

- children 0-9 and their families
- information-sharing and common standards
- common core training for workforce
- Divisional Commander is key stakeholder
- evaluation shows public referrals and child protection referrals down



A merged partnership: Dartford and Gravesham



Dartford and Gravesham

Elements of success

- wide range of partners, including at county level:
 - Trading Standards (Kent County Council)
 - Station Manager (Kent Fire & Rescue Service)
 - Education (Kent County Council)
 - Youth Services (Kent County Council)
 - Community Wardens (Kent County Council)
 - South East Coast Ambulance Service (Ambulance Trust)
 - Youth Offending Service (Kent County Council)
 - Kent Highways Services (Kent County Council)
 - Border & Immigration Agency
 - British Transport Police
- representation from the private sector: Bluewater, the Bridge Development, Ebbsfleet International Station and Land Securities
- co-located public safety units in Dartford and in Gravesham
- daily and fortnightly tasking meetings in each PSU
- strong local authority leadership and support

Salford: Multi-agency problem-solving (1)

Public space CCTV mapping

- overlay of relevant data
- 260 Salford City Council cameras
- 300 + other cameras
- 178 users of system
- data gathered by PCSOs
- capacity to host for all ten Greater Manchester partnerships



Salford: Multi-agency problem-solving (2)

Benefits

- partner buy-in
- support for detections
- safe routes
- responsive tasking
- easy to access
- system cost less than a single pole-mounted CCTV camera



Safer Preston MAPS team

- responsive and flexible
- creates task and finish groups to address specific issues
- draws on frequently shared and personalised data
- able to tackle short-term issues, e.g. criminal damage on buses
- continuous review of processes
- link to Lancashire Multi-Agency Tasking and Co-ordination process



Strategic Planning: GMAC

- serves all ten Greater Manchester partnerships
- central team of analysts
- c. £65k contribution from each partnership
- GMAC data hub accessed via secure link for local analysts
- data sets included: GMP, FRS, ambulance service, Probation, GMPTE, Local Authority, Victim Support plus CACI, Experian, and census data
- additional data sets available within partnerships
- data sharing underpins framework of business planning consistent across all ten GM partnerships



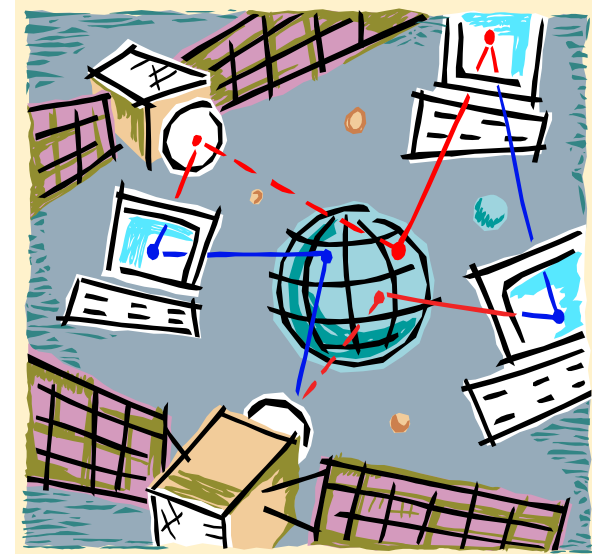
GMAC Strategic Assessment

- analysis of perceptions at neighbourhood level identifies effective practice (Respect Action Neighbourhoods)
- interviews with RSLs across the ten partnerships: gathering 'soft' data across the ten partnerships
- mapping of prison releases and level of burglary
- creation of a Domestic Abuse Risk Escalation highlights increases in severity and risk over time




Widening the scope

- formal inclusion of Probation as a responsible authority
- 'geno-mapping' beyond the criminal network
- Merseyside Police: project to match aliases
- link to Local Criminal Justice Boards
- increased access through co-location



Information-sharing protocols

- North East Community Safety Information Sharing Protocol
- [link from guidance](#)
- covers whole of region, providing consistency across borough and district borders
- sample protocol form
- acknowledges key role of designated liaison manager – a statutory role

To share or not to share?
	<ul style="list-style-type: none">• Victoria Climbié• Soham• Peter Connelly• Pilkington• Doncaster attacks

Information Sharing In Partnerships
23 February 2010
Verity Ridgman

Questions?

Verity.ridgman@homeoffice.gsi.gov.uk

0207 035 6387