

**Devon Strategic Partnership**

stronger together

# **Sustainable Community Strategy for Devon**

## **Theme Analysis**

### **Safer Devon**

**January 2007**

Please send comments to:  
[Devon Strategic Partnership](#)  
C/o County Hall, Topsham Road  
Exeter, EX2 4QD  
Tel: 01392 383064  
Email: [Devon Strategic Partnership](mailto:Devon Strategic Partnership)  
[www.devonsp.org.uk](http://www.devonsp.org.uk)

## **Contents**

### **Themed analysis**

[Issue One – Volume Crime](#)

[Issue Two – Domestic Abuse](#)

[Issue Three – Alcohol and Drugs](#)

[Issue Four – Anti Social Behaviour](#)

[Issue Five – Prejudice / Hate crime](#)

[Issue Six – Youth Crime](#)

[Issue Seven – Fear of crime](#)

### **Evidence**

[Issue One – Volume Crime](#)

[Issue Two – Domestic Abuse](#)

[Issue Three – Alcohol and Drugs](#)

[Issue Four – Anti Social Behaviour](#)

[Issue Six – Youth Crime](#)

[Appendix](#)

**Devon Strategic Partnership Sustainable Community Strategy**

**Strategic Analysis Template for Evidence Base**

**Safer Devon theme analysis – Volume Crime**

**Context:** the DSP is producing a new Sustainable Community Strategy by mid 2007. One part of this document is to be a web based evidence base to be developed by early 2007. This document contributes to the evidence base by taking the statistical data that has been identified for every theme, and providing an expert strategic analysis that ideally has the backing of key agencies and organisations in the theme. When this information is added to the views of residents, agencies and organisations regarding current issues and a vision for the future, a clear mandate will be established for the issues that the Devon Strategic Partnership should be pursuing in the Sustainable Community Strategy.

<b>Theme: Safer Devon Partnership - Volume Crime</b>	
<b>Written by: Cath Farrin</b>	
<b>Title &amp; Organisation: Partnership Sgt. Devon and Cornwall Constabulary</b>	
<b>Link to theme/ Devon Strategic Partnership</b> (e.g. DSP theme champion, LAA lead): Safer Devon Partnership theme lead.	

<b>Please list the key people/ organisations this response has been discussed &amp; agreed with:</b>	
SDP officer group	Agreed

**Signed on behalf of the theme: Cath Farrin**

**Date: 27th November 2006**

**ISSUE No: One**

**TITLE OF ISSUE: Volume Crime**

**1 Identification of Issue**

- a What is the issue for Devon?** The impact of re-offending committed by adults and young people more specifically Priority and Prolific Offenders (PPO). We need to reduce this figure by providing a robust and consistent service across the whole area.
- b Who does it affect?** The effects of a crime committed are wide reaching, the individual victim and the community in which they live. The offender who may not be given access to the service required encouraging a change of behaviour and their family. There are also financial implications to deal with the crime, victim and offender.
- c Does it affect all of Devon geographically or certain parts?** Crime is committed throughout the whole area.

**2 Justification/ demonstration of Issue**

- a How do you know the issue is there?**
  - i Datasets/ indicators**

The level of offending can be further identified by the detail of crime and location provided within the strategic assessment. Using both crime statistics and intelligence submissions (National Intelligence Module) repeat offenders can be identified.
  - ii Practitioner and expert experience of issue.**

Data sharing was judged by practitioners to be a crucial aspect of the PPO programme. Ensuring that all-relevant agencies share data appropriately is seen as a priority for an effective PPO scheme. The selection of PPOs needs to be systematic, consistent and accountable in order to ensure the most troublesome offenders are identified and put on the scheme.
  - iii Research**

Research indicates that about 10% of offenders are responsible for over half of all crime. A PPO is more criminally versatile than other offenders. On average those that become PPOs their convictions began significantly younger compared to other offenders (average of 15yrs versus average of 21yrs.). A home office report states the PPO programme is associated with a drop in recorded offending reflected in convictions. It is suggested that comparing the 6 months leading up to a PPO compared to the 6 months on the scheme there is a 10% reduction in recorded convictions.

DRAFT FOR CONSULTATION

**b Links to other strategies –**

<b>Document or author</b>	<b>Title of document and web address?</b>	<b>How is issue raised?</b>	<b>Implications for Devon</b>
Local Area Agreement	Safer Communities	Mandatory outcome for 2007/08	If resourced will result in reduction of crime
Regional Spatial Strategy			
District Community Strategies			
MCTi/ Parish/Town plans			
Publications from authority bodies or other organisations in this sector			
Major Research			
Central govt			
Devon Rural Strategy			
State of the South West report			
Other reports such as State of the SW Environment, SWCCIP, Govt Area profiles and neighbourhood statistics.			
Other			

**c Links to/ impact on other themes/ issues**

<b>Theme/ issue</b>	<b>Possible links to/ impact of this issue on:</b>
Environmental sustainability, including climate change and sustainable energy	
Economic sustainability	Reporting suggests education, training and employability were the most common needs identified in 82% of PPOs. If supported to reduce offending this will improve life chances.
Social sustainability e.g. community cohesiveness and individual well being	

DRAFT FOR CONSULTATION

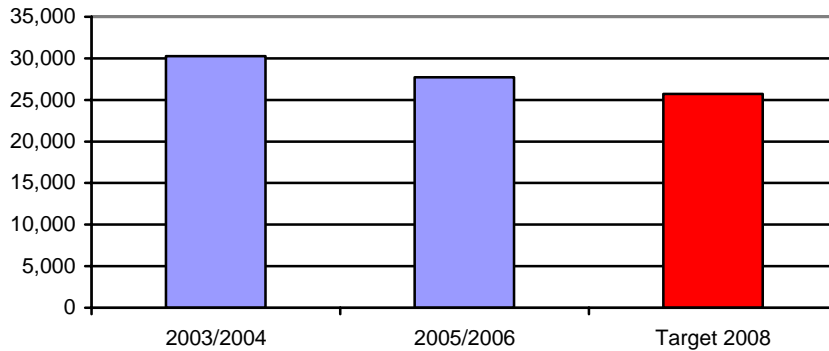
Rural issues	Lack of access to services required
Housing	Lack of housing provision has an impact on changing behaviour and in turn reducing offending
Health	Nationally 67% of PPOs indicate drug misuse as a factor in their offending This misuse has impact on health
Older people	Fear of crime aspect is heightened
Children and young people	The prevent and deter strand of this scheme is led by the youth offending team and has clear links with the majority of their work
Safer Devon	Links with other theme groups within this block e.g Drugs, youth crime prevention and ASB.
Strong Communities	
Culture	
Transport and accessibility	
Other (please specify)	

**3 Drawing on the above, what therefore is/ are the challenge(s) Devon must meet to address this issue?**

The challenge is for Devon to create a Devonwide PPO scheme, which is fully resourced and well managed. This means a consistent and economical approach across the LAA area making sure local factors are catered for.

## Volume Crime

### Indicator 1 – Overall 10 BCS Comparator crimes



Source: Devon and Cornwall Constabulary - LAA

Comparator Crime type	Baseline 2003/04	2005/06	Target 2007/08
Theft of vehicle	1,212	1,084	1,100
Theft from vehicle	5,378	4,087	4,507
Vehicle Interference	575	374	501
Domestic Burglaries	2,276	1,880	2,054
Theft of Pedal Cycle	917	812	812
Theft from Person	530	534	492
Criminal Damage	11,317	11,374	9,316
Common Assault	2,621	2,309	2,250
Wounding	5,293	5,113	4,534
Robberies	139	148	128

Source: Devon and Cornwall Constabulary - LAA

**Devon Strategic Partnership Sustainable Community Strategy**  
**Strategic Analysis Template for Evidence Base**  
**Safer Devon theme analysis – Domestic Abuse**

<b>Theme: Safer Devon – Domestic Abuse</b>
<b>Written by: Roy Tomlinson/Rachel Martin</b>
<b>Title &amp; Organisation: DCC/adva</b>
<b>Link to theme/ Devon Strategic Partnership</b> (e.g. DSP theme champion, LAA lead): Roy Tomlinson

<b>Please list the key people/ organisations this response has been discussed &amp; agreed with:</b>	
All statutory and community agencies that are part of adva	

**Signed on behalf of the theme:**

**Date:**

**ISSUE No: Two**

**TITLE OF ISSUE: Domestic Abuse**

**1 Identification of Issue**

- a What is the issue for Devon?** The issue for Devon is that domestic abuse has a major financial impact on all agencies' services and undermines the well-being of significant sections of the population. Services and policies have been developed over the last four years but need sustaining and building more comprehensively into mainstream activity
- b Who does it affect?** Domestic abuse represents 25% of all violent crime and impacts a far wider section of the community than those who report to the police. 1 in 4 women; 1 in 6 men will be victims in their lifetime; 60% of child protection registered children live in DV households; so far un-numbered children live in DV households
- c Does it affect all of Devon geographically or certain parts?** It affects all of Devon and its different social communities.

**2 Justification/ demonstration of Issue**

- a How do you know the issue is there?**
  - i Datasets/ indicators** - Quarterly composite DV reports are produced by Corrine Tuck and are available on the [ADVA website](#). This has wealth of data in it about prevalence, reported incidents to police etc which is too comprehensive to summarise here.
  - ii Practitioner and expert experience of issue.** There is a wealth of knowledge in Devon about the extent and hidden levels of DV which backs up the statistics.
  - iii Research.** National and international research is extensive on the nature, prevalence and most effective responses to DV

DRAFT FOR CONSULTATION

**b Links to other strategies –**

<b>Document or author</b>	<b>Title of document and web address?</b>	<b>How is issue raised?</b>	<b>Implications for Devon</b>
Local Area Agreement	DV is one of priority areas and current LPSA2 Target www.adva.org.uk	Established as one of the 5 safer outcome areas	Identified in the current adva strategy 2005-08
Regional Spatial Strategy			
District Community Strategies	8 District CSPs each have DV as one of their 3 priority targets	Local community consultation and action plans	Local plans dovetail with county's strategic direction on DV to ensure consistent, quality service provision as economically as possible.
MCTi/ Parish/Town plans			
Publications from authority bodies or other organisations in this sector			
Major Research			
Central govt	National Domestic Violence Plan	Promotes community model for local authorities to engage with DV from criminal & community perspective	Devon has followed this model and is advocated by Home Office as leading nationally in its developments
Devon Rural Strategy			
State of the South West report			
Other reports such as State of the SW Environment, SWCCIP, Govt Area profiles and neighbourhood statistics.			
Other			

DRAFT FOR CONSULTATION

**c Links to/ impact on other themes/ issues –**

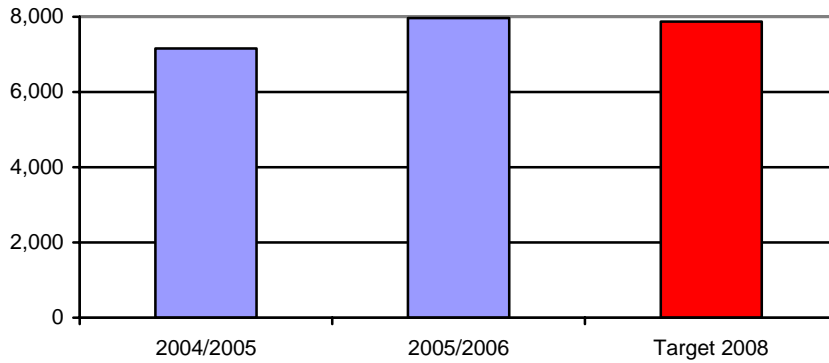
<b>Theme/ issue</b>	<b>Possible links to/ impact of this issue on:</b>
Environmental sustainability, including climate change and sustainable energy	
Economic sustainability	Evidence from current adva services that interventions enable survivors to resume or start careers. 25% of all employed people in Devon will be DV victims and un-known number will be perpetrators. Research evidence points to the impact of DV on work performance, efficiency and effectiveness
Social sustainability e.g. community cohesiveness and individual well being	DV has social, emotional and psychological impacts on victims their children and perpetrators which undermines well being both for individuals and the communities they live in
Rural issues	Levels of reporting to the Police and accessing current services are lower in rural areas and need addressing as part of a comprehensive rural access strategy
Housing	High demand on homeless services from victims. New homeless strategy and policy needs to be sustained
Health	DV victims more likely to suffer mental health, alcohol/drug misuse, attendance at A&E, usage of GP services. High risk for women during pregnancy
Older people	Hidden problem of adult abuse by carers in domestic settings
Children and young people	60% of CP registered children come from DV households; similar % for looked after population and children in need
Safer Devon	25% of all violent crime
Strong Communities	Services and prevalence in minority communities is under-developed. Sensitive services geared to these communities needs should be developed
Culture	As above
Transport and accessibility	
Other (please specify)	

**3 Drawing on the above, what therefore is/ are the challenge(s) Devon must meet to address this issue?** The challenges are numerous in terms of issues but biggest threat to current services and those that need developing is lack of adequate inter-agency pooled budget and resources to sustain the adva strategy. Specific challenges are:

- Provision of safe alternative housing for victims and children. Need to increase the alternative options to avoid demand on Refuges and focus more on removal of perpetrator
- Increasing awareness in the Health Services to DV and its impact on provision – mental health, GPs, Midwifery, Heath Visiting, School Nursing, Alcohol Service, Drug Services, A&E
- Earlier and more effective interventions by Criminal Justice Agencies to prevent repeat offending and potential homicides
- More consistent statutory agency support and input to risk assessment, safety planning and Multi-agency Risk Assessment Conferences
- Improving the levels of safety for victims by: reducing the 25% of DV violent crime incidents; reducing/ending the 50% of homicides that are DV related; reducing the impact of DV on children
- Change social attitudes of tolerance of domestic violence

## Domestic abuse

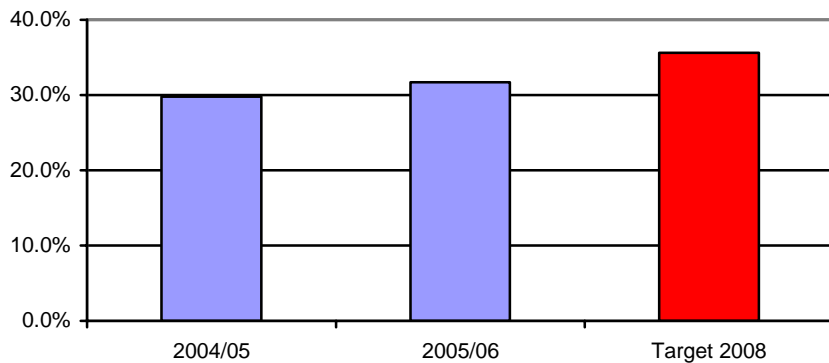
### Indicator 2 – Level of reported Domestic Violence incidents



Source: Devon and Cornwall Constabulary - LAA

Note: baseline calculated on the 6 month period October 2004 – March 2005 doubled

### Indicator 3 – The percentage of offences brought to justice as a proportion of the total number of reported incidents



Source: Devon and Cornwall Constabulary - LAA

Note: baseline calculated on the 6 month period October 2004 – March 2005

**Devon Strategic Partnership Sustainable Community Strategy**

**Strategic Analysis Template for Evidence Base**

**Safer Devon theme analysis – Drugs and Alcohol**

<b>Theme: Safer Devon Partnership (SDP) Drugs and Alcohol Theme</b>
<b>Written by: Kate Hall</b>
<b>Title &amp; Organisation: Partnerships Development Manager, Devon Drug and Alcohol Action Team (DAAT)</b>
<b>Link to theme/ Devon Strategic Partnership (e.g. DSP theme champion, LAA lead): Interim SDP Drugs and Alcohol Theme Lead</b>

<b>Please list the key people/ organisations this response has been discussed &amp; agreed with:</b>	
SDP Officers Group	Agreed
It has been discussed with DAAT members.	

**Signed on behalf of the theme: Kate Hall**

**Date: 24/11/06**

**ISSUE No: Three**

**TITLE OF ISSUE: Drugs and Alcohol**

**1 Identification of Issue**

- a What is the issue for Devon?** Lack of adequate prioritisation and funding for local alcohol treatment and projects, due to national absence of both. The Devon DAAT took on the alcohol remit in 2005, following the publication of the Alcohol Harm Reduction Strategy for England and local partner consultation. However, no funding was provided to deliver the strategy – either nationally or locally. The DAAT receives funding from the National Treatment Agency – however, it is ring fenced for drug treatment. £95m is spent on specialist alcohol treatment across England, whilst £623 million is spent on drug treatment (DH, 2006).
- b Who does it affect?** It is cross-cutting:
- Individuals – includes health, crime and disorder, social and environmental. The Cabinet Office estimates that each day an average of 60 people die from alcohol-related causes (22,000 per year from alcohol – 1,300 from drugs). The Office for National Statistics calculates that the fatality rate from chronic conditions directly related to alcohol misuse has doubled over the past 15 years.
  - Society – includes public health burden and health inequalities, hidden harm agenda. For example, the Strategy Unit estimates that between 780,000 and 1.3m children are affected by parental alcohol problems.
  - Financial cost to agencies - cost to a wide range of agencies ranging from the police to A&E departments, ambulance trusts to the fire service. For example, the Strategy Unit calculates the cost of alcohol misuse to the health service to be £1.7bn per annum. They also estimate the overall annual cost of crime and anti-social behaviour linked to alcohol misuse to be £7.3bn. Alcohol misuse shows strong links to violence. 1.2m violent incidents (around half of all violent crimes) and 360,000 incidents of domestic violence (around a third) are linked to alcohol misuse.
- c Does it affect all of Devon geographically or certain parts?** Again, it is cross-cutting – the majority of the Devon population drink. Alcohol related crime and disorder is concentrated on town centre hotspots linked to the night time economy (Strategic assessment, 2006). The DAAT and partners are in the process of carrying out a needs assessment which will identify the gaps in alcohol treatment, for both binge and chronic drinkers.

## 2 Justification/ demonstration of Issue

### a How do you know the issue is there?

#### i Datasets/ indicators

1. National/ regional – a wide variety of research - international, national and regional highlights the issue, for example, the Strategy Unit's Interim report, Home Office data on alcohol related crime and disorder, ONS data on alcohol-related deaths, General Household survey data etc. DH data highlights the fact that only 1 in 14 people requiring alcohol treatment in the South West receive any support (2006).
2. There are a number of local reports, including one carried out by Teignbridge PCT regarding GPs and alcohol issues and one by Addaction and Sure start in North Devon which highlight local alcohol issues.
3. This is being collated by the DAAT needs assessment for alcohol
4. Alcohol Concern provides a wide range of reports on alcohol issues- their most recent report is called ['Wasted – Lives lost to alcohol'](#) which highlights the links between:
  - alcohol and health problems such as hypertension, cancer, accidents and injuries
  - alcohol and crime
  - alcohol and financial loss in the workplace
5. Gaps in data – There are well-established difficulties in collecting data on alcohol – it is subjective, and frequently alcohol-related injuries, arrests etc are allocated to other codes. Health data related to alcohol is particularly difficult to access.

**ii Practitioner and expert experience of issue.** Practitioner and expert experience in Devon highlights this issue time and time again. DAAT delivery groups, which include a wide range of organisations, highlight the issue repeatedly, as do user forums members and carers. The issue is brought up in conferences and clinical audits, treatment planning sessions and consultation events.

**iii Research** – there is a vast body of research – both national and international which report on a wide range of alcohol interventions, including treatment, social changes, licensing, community projects and state regulation. There is even research which relates levels of aggression and violence to the bar environment and design.

**b Links to other strategies**

Please see following reports and links for more comprehensive lists of research and strategies:

[http://www.alcoholconcern.org.uk/files/20061110\\_120543\\_Wasted%20report.pdf](http://www.alcoholconcern.org.uk/files/20061110_120543_Wasted%20report.pdf)

[http://www.strategy.gov.uk/work\\_areas/alcohol\\_misuse/](http://www.strategy.gov.uk/work_areas/alcohol_misuse/)

[http://www.london.gov.uk/mayor/health/drugs\\_and\\_alcohol/agenda.jsp](http://www.london.gov.uk/mayor/health/drugs_and_alcohol/agenda.jsp)

[http://www.dh.gov.uk/PolicyAndGuidance/HealthAndSocialCareTopics/AlcoholMisuse/AlcoholMisuseAssociatedPublications/fs/en?CONTENT\\_ID=4001740&chk=apY%2BiR](http://www.dh.gov.uk/PolicyAndGuidance/HealthAndSocialCareTopics/AlcoholMisuse/AlcoholMisuseAssociatedPublications/fs/en?CONTENT_ID=4001740&chk=apY%2BiR)

<http://www.ias.org.uk/resources/factsheets/factsheets.html>

[http://ec.europa.eu/health/ph\\_determinants/life\\_style/alcohol/alcohol\\_com\\_en.htm](http://ec.europa.eu/health/ph_determinants/life_style/alcohol/alcohol_com_en.htm)

[http://www.who.int/substance\\_abuse/publications/alcohol/en/](http://www.who.int/substance_abuse/publications/alcohol/en/)

**c Links to/ impact on other themes/ issues**

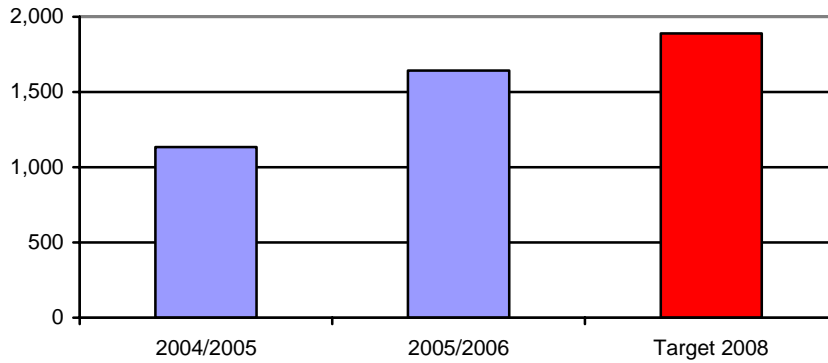
<b>Theme/ issue</b>	<b>Possible links to/ impact of this issue on:</b>
Environmental sustainability, including climate change and sustainable energy	
Economic sustainability	
Social sustainability e.g. community cohesiveness and individual well being	There are close links as highlighted above.
Rural issues	There are particular issues related to accessing treatment, and also alcohol misuse issues such as drink driving.
Housing	
Health	There are close links as highlighted above – will effect local delivery regarding national targets on teenage pregnancy, cancer, accident and injuries, heart disease etc.
Older people	There are particular links to alcohol for accidents and injuries in older people, due to decrease in tolerance and also mixing with prescription medication and depression.
Children and young people	As highlighted above re Hidden harm and also close links with other factors such as personal safety, anti social behaviour, sexual health and teenage pregnancy.
Safer Devon	As above – linked to comparator crimes e.g. criminal damage and violent crimes.
Strong Communities	
Culture	
Transport and accessibility	
Other (please specify)	The built environment e.g. the town centres and fear of crime.

**3 Drawing on the above, what therefore is/ are the challenge(s) Devon must meet to address this issue?**

The challenge is to prioritise alcohol issues across the partnership and provide adequate funding for alcohol treatment and projects in order to minimise alcohol related harms across Devon.

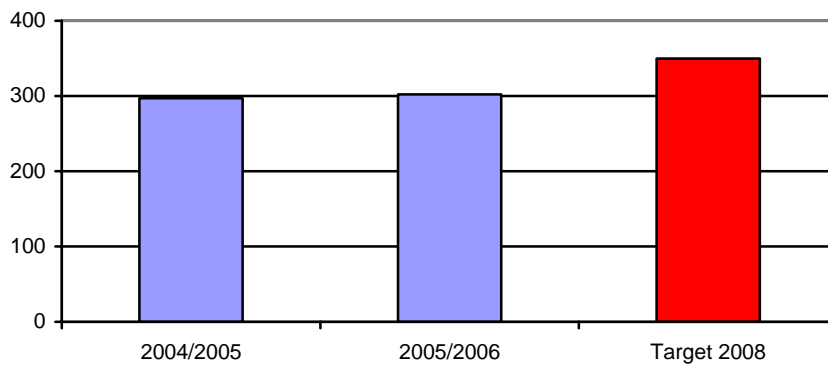
## Alcohol and Drugs

### Indicator 4 – The number of problem drug users accessing treatment services



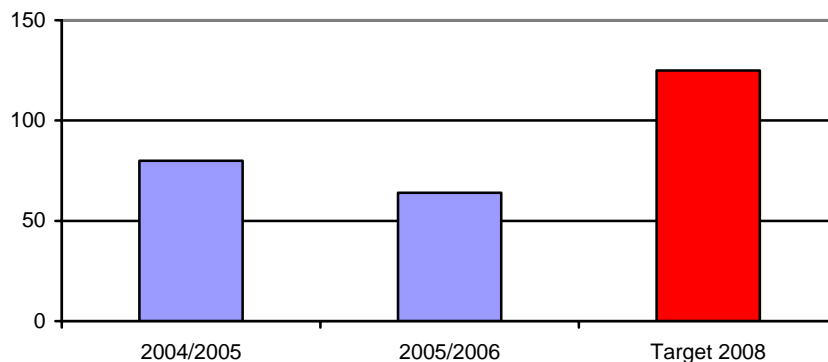
Source: DAAT - LAA

### Indicator 5 – The number of young people referred to Young People Substance Misuse Services



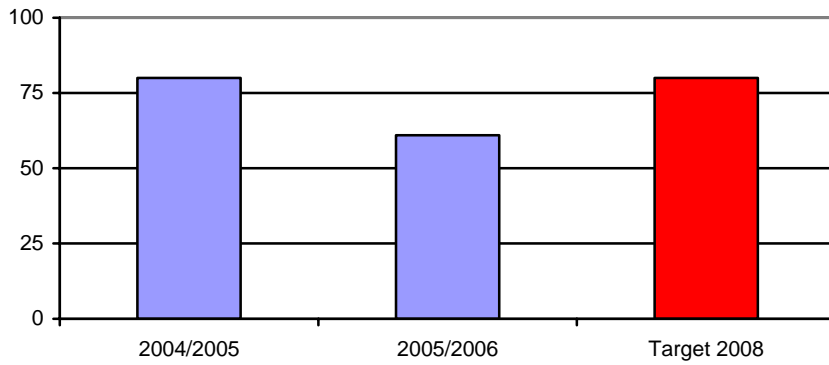
Source: DAAT - LAA

### Indicator 6 – The number of offenders placed on Drug Rehabilitation Orders (Medium / high risk)



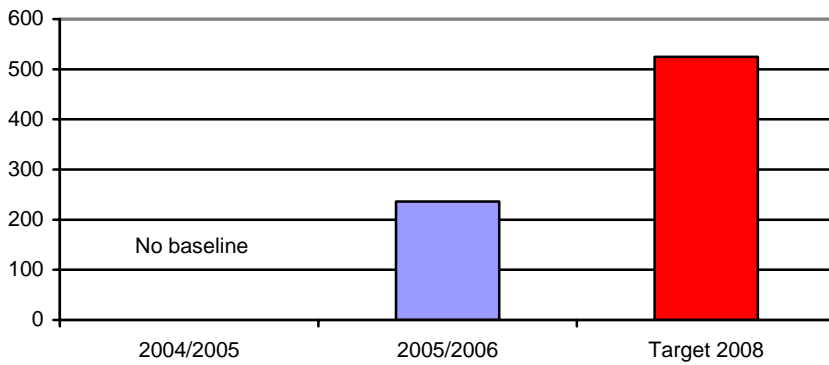
Source: DAAT - LAA

**Indicator 7 - The number of targeted offenders (PPOs) Treatment Accessing**



Source: DAAT - LAA

**Indicator 8 - Increase the number of offenders engaging with the alcohol Arrest Referral Scheme**



Source: DAAT - LAA

**Devon Strategic Partnership Sustainable Community Strategy**

**Strategic Analysis Template for Evidence Base**

**Safer Devon theme analysis – Anti Social Behaviour**

<b>Theme:</b> Anti Social Behaviour
<b>Written by:</b> Rachel Wieck
<b>Title &amp; Organisation:</b> ASB Officer, Devon & Cornwall Constabulary
<b>Link to theme/ Devon Strategic Partnership:</b> SDP – ASB Theme Lead

<b>Please list the key people/ organisations this response has been discussed &amp; agreed with:</b>	
SDP Officers Group	Agreed
Will be circulated ASB Theme Group	

**Signed on behalf of the theme:**

**Date:**

**ISSUE No: Four**

**TITLE OF ISSUE: Tacking Anti Social Behaviour Effectively Across Devon  
– Delivering an effective joined up response**

**1 Identification of Issue**

- a What is the issue for Devon?** In order to tackle ASB effectively, all agencies need to be signed up to taking action, from an early preventative stage right through to setting boundaries and enforcing an acceptable standard of behaviour. Whilst single agencies have responsibilities, there are multiple risk factors associated with ASB perpetrators and this requires a joined up response from all agencies. There is an inconsistent desire by key agencies to tackle ASB head on at the earliest possible opportunity. This inconsistency is evidenced by lack of resources (staff and budget), threshold criteria, policies and procedures that obstruct rather than enable action, lack of empowerment at practitioner level, lack of accountability at managerial level, conflicting attitudes and targets of agencies, differences of culture and philosophy between organisations and by staff within organisations
- b Who does it affect?** Residents, businesses and tourists who have to suffer ASB. Perpetrators of ASB. Agencies trying to deliver – the whole remit of statutory public sector, social housing and criminal justice agencies.
- c Does it affect all of Devon geographically or certain parts?** Pan Devon. Response to ASB by agencies may differ due to postcode or the attitude of the lead agency.

**2 Justification/ demonstration of Issue**

- a How do you know the issue is there?**
- i Datasets/ indicators** – Police, Housing and Environmental Health incident data give an indication of the level of problem of reported ASB and information about likely perpetrators.  
**There are low numbers of injunctive actions, ABCs, ASBOs, Parenting Orders, Child Safety Orders (nil) which suggest such tools are underutilised.**  
We lack information about breach rate of ABCs  
We lack information about the numbers and types of alternative interventions, and evaluation of their effectiveness.
- ii Practitioner and expert experience of issue.** Anecdotal evidence by these groups indicates a lack of engagement by some agencies at case conferences, a lack of identification of a single point of contact within agencies, slow responses, lack of commitment to mainstream key ASB posts. These all highlight an inconsistency of desire to tackle ASB. Some agencies that appear not to engage in Devon are often the same agencies that fail to engage in other parts of the country.

**b Links to other strategies**

- Respect Action Plan (respect.gov.uk)
- SDP/ASB Theme Template
- Strategic Assessment

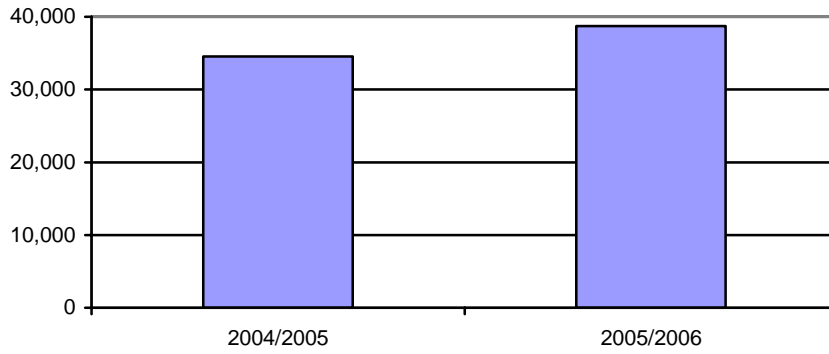
**c Links to/ impact on other themes/ issues**

Theme/ issue	Possible links to/ impact of this issue on:
Environmental sustainability, including climate change and sustainable energy	
Economic sustainability	
Social sustainability e.g. community cohesiveness and individual well being	Community Cohesion is best achieved by agencies working collaboratively and using all the tools they have at their disposal. But all practitioners involved need to be signed up to it.
Rural issues	Ensure that there is no postcode lottery in the response by agencies
Housing	Housing has a huge amount of tools to use. Homelessness, intentional or otherwise could be avoided by other agencies playing their part in appropriate intervention. Design of new housing estates needs to take into account ASB issues, including noise levels, overcrowding and parking problems.
Health	ASB has impact on health of victims. Health (particularly mental health) of perpetrators can result in the ASB.
Older people	
Children and young people	
Safer Devon	
Strong Communities	
Culture	
Transport and accessibility	
Other (please specify)	

**3 Drawing on the above, what therefore is/ are the challenge(s) Devon must meet to address this issue?** It has got to empower and encourage those agencies who are not signing up to tackling ASB. Appropriate levels of funding to ensure agencies can deliver core responsibilities.

## Anti Social Behaviour

### Indicator 9 - Number of Anti-Social Behaviour incidents reported to the Police



Source: Devon and Cornwall Constabulary - LAA

Target March 2008

5% reduction on previous years

**Devon Strategic Partnership Sustainable Community Strategy**

**Strategic Analysis Template for Evidence Base**

**Safer Devon theme analysis – Prejudice / Hate Crime**

<b>Theme: Prejudice/Hate crime</b>
<b>Written by: Roy Tomlinson</b>
<b>Title &amp; Organisation: CSO DCC</b>
<b>Link to theme/ Devon Strategic Partnership</b> (e.g. DSP theme champion, LAA lead): LAA link under Safer Communities

<b>Please list the key people/ organisations this response has been discussed &amp; agreed with:</b>	
SDP Officer Group	Agreed
Prejudice/hate crime theme group	

**Signed on behalf of the theme:**

**Date:**

**ISSUE No: Five**

**TITLE OF ISSUE: Prejudice / Hate Crime**

**1 Identification of Issue**

- a What is the issue for Devon?** The issue for Devon is that activity on the impact of prejudice on minority communities has not so far been lead by a co-ordinated strategy or clear county-wide action plan. DSP has an overall role in tackling prejudice and intolerance. SDP role is to deal with the impact of crime and reduce its prevalence on minority communities.
- b Who does it affect?** It affects all minority communities but SDP has agreed three priorities related to:
  - 1. BME
  - 2. LGBT
  - 3. People with learning difficulties
  - 4. The increase in migrant workers is also likely to have an impact in developing responses to this issue in the future.
- c Does it affect all of Devon geographically or certain parts?** Affects all of Devon, although reporting of incidents to Police has geographic variations.

**2 Justification/ demonstration of Issue**

- a How do you know the issue is there?** Issue was identified as one of the outcome areas under the LAA 2005-08. This drew on the pre-existing local eight Community Safety Strategies which all identified dealing with this as a priority. It is also known from national, regional and local research that under-reporting of prejudice/hate crime is significant issue especially in rural areas. SDP commissioned Crime Concern to review the position in Devon and to prepare a draft strategy. This was completed in September 2006 and sets out a way forward in dealing with the issue. The SDP strategic assessment process for end November will be producing an analysis of reports to Police across Devon which will form the basis of setting future targets
- b Links to other strategies.**

Document or author	Title of document and web address?	How is issue raised?	Implications for Devon
Local Area Agreement	Safer Communities	Identified priority	Need to produce more effective support to victims to seek help
Regional Spatial Strategy			

DRAFT FOR CONSULTATION

District Community Strategies			
MCTi/ Parish/Town plans			
Publications from authority bodies or other organisations in this sector	A firmer foundation	Local survey of LGBT communities	Showed problem of under-reporting and fear
Major Research			
Central govt			
Devon Rural Strategy			
State of the South West report			
Other reports such as State of the SW Environment, SWCCIP, Govt Area profiles and neighbourhood statistics.			
Other			

**c Links to/ impact on other themes/ issues**

<b>Theme/ issue</b>	<b>Possible links to/ impact of this issue on:</b>
Environmental sustainability, including climate change and sustainable energy	
Economic sustainability	May be impeding the groups affected from full economic activity. Impact of migrant workers
Social sustainability e.g. community cohesiveness and individual well being	Has direct impact on the overall cohesiveness/tolerance of all communities and impairs quality of life of those communities who suffer prejudice/hate crime
Rural issues	Clear evidence that this is more of an issue for those who live in the more rural areas
Housing	May well be impeding victims in these groups from fully accessing services under all of the heading listed here
Health	Mental Health impact of crime
Older people	
Children and young people	Impact if bullying in schools/youth services
Safer Devon	Key role in dealing with crime that affects these groups. Strategy and action plan being developed
Strong Communities	Community cohesion and tension strategy
Culture	Community cohesion
Transport and accessibility	
Other (please specify)	

### **3 Challenge(s) Devon must meet to address this issue?**

There are a range of issues pertinent to the safer theme but also with wider implications

- How to create cohesive communities where difference is accepted and people from all communities can live without fear and experience of crime based on prejudice
- To agree what the priorities are for supporting members in the communities affected by prejudice and hate crime
- To agree a budget that offers some hope of tackling problem
- To identify a lead officer to take forward the work
- To agree a steering/oversight body/group to oversee the development of the work
- Changing demographics from migrant worker increases and potential impact on community cohesion

**Devon Strategic Partnership Sustainable Community Strategy**  
**Strategic Analysis Template for Evidence Base**  
**Safer Devon theme analysis – Youth Crime Prevention**

<b>Theme: Safer Communities - Youth Crime Prevention</b>
<b>Written by: Sue McGrath</b>
<b>Title &amp; Organisation: Senior Commissioning Manager, Youth Crime Prevention – Devon Youth Offending Service</b>
<b>Link to theme/ Devon Strategic Partnership (e.g. DSP theme champion, LAA lead): Safer Devon Partnership – Youth Crime Prevention Theme Lead</b>

<b>Please list the key people/ organisations this response has been discussed &amp; agreed with:</b>	
Will be discussed with SDP Youth Crime Prevention Theme Group	
SDP Officer Group on 30 Nov 2006	Agreed

**Signed on behalf of the theme: Sue McGrath**

**Date: 22 November 2006**

**ISSUE No: Six**

**TITLE OF ISSUE: Youth Crime Prevention**

**1 Identification of Issue**

- a What is the issue for Devon?** To reduce the number of Devon's children and young people who enter the youth justice system
- b Who does it affect?** Offending behaviour by children and young people in Devon is relatively low but can adversely affect the life chances and outcomes of those who are criminalised. It also affects children and young people and other members of the community who are victims of youth crime, and impacts upon fear of crime in the community.
- c Does it affect all of Devon geographically or certain parts?** It is spread across most of Devon's geography but is generally thinly spread and sporadic, with a few isolated 'hotspots' within certain communities.

**2 Justification/ demonstration of Issue**

**a How do you know the issue is there?**

**i Datasets/ indicators**

Both Youth Offending Team and Police collect data in relation to youth offending and are able to produce detailed statistics. YOT trend data shows that youth offending in Devon is decreasing. Between 1 July 2005 and 30 June 2006 there were 1192 young people across Devon who entered the youth justice system for the first time. Police produce Strategic Analysis which identifies specific issues relating to youth crime e.g. the recent Criminal Damage Profile (June 2006) which enables specific localities / age groups / types of offences etc to be targeted.

**ii Practitioner and expert experience of issue.** Experience from practitioners in the youth offending service and other children and young peoples services support the fact that prevention and early intervention and diversionary activities are effective in preventing children and young people from becoming involved in offending behaviour, and in reducing the likelihood of re-offending.

**iii Research**

There is a wealth of research in relation to the risk and protective factors linked to offending behaviour by children and young people, and also in relation to 'what works' i.e. effective practice models of prevention, early intervention and diversion.

**b Links to other strategies**

<b>Document or author</b>	<b>Title of document and web address?</b>	<b>How is issue raised?</b>	<b>Implications for Devon</b>
Local Area Agreement		New optional indicator proposed for 2007/08	Reduce the number of first time entrants to the youth justice system by 5%.  Activity supported by Devon Youth Offending Service and Safer Devon Partnership Youth Crime Prevention Theme Group
Regional Spatial Strategy			
District Community Strategies			
MCTi/ Parish/Town plans			
Publications from authority bodies or other organisations in this sector			
Major Research	Every Child Matters	Outcomes and Inspection framework	Children's Trust, YOT is a key player. Links to AXS Pathways being developed
Central govt	Youth Justice Board <a href="http://www.yjb.gov.uk">www.yjb.gov.uk</a>	New prevention funding 2006/08	Prevention Grant 2006/07 (£716,271) - increased range of preventive activity across Devon ie Youth Inclusion programme (YISP), Extended Youth Inclusion Support Panels (YISPs) to cover 8-16 age range, Mentoring

DRAFT FOR CONSULTATION

			Programme, Parenting Support, Family Group Conferencing, Appointment of Senior Commissioning Manager, Youth Crime Prevention
Devon Rural Strategy			
State of the South West report			
Other reports such as State of the SW Environment, SWCCIP, Govt Area profiles and neighbourhood statistics.			
Other			

**c Links to/ impact on other themes/ issues**

<b>Theme/ issue</b>	<b>Possible links to/ impact of this issue on:</b>
Environmental sustainability, including climate change and sustainable energy	
Economic sustainability	Improved life chances and outcomes for children and young people who are prevented from offending or who are supported to reduce their re-offending behaviour.
Social sustainability e.g. community cohesiveness and individual well being	Wide implications for children and young people, their families and communities
Rural issues	Rural isolation can be an issue for children and young people unable to access the more 'urbanised' resources and activities More resource capacity for prevention, early intervention and diversionary activities for children and young people should assist, led through a partnership approach and needs-analysis
Housing	There are known links between offending behaviour and poor accommodation / homelessness for children and young people
Health	There are known links between offending behaviour by children and young people and poor mental and physical health

DRAFT FOR CONSULTATION

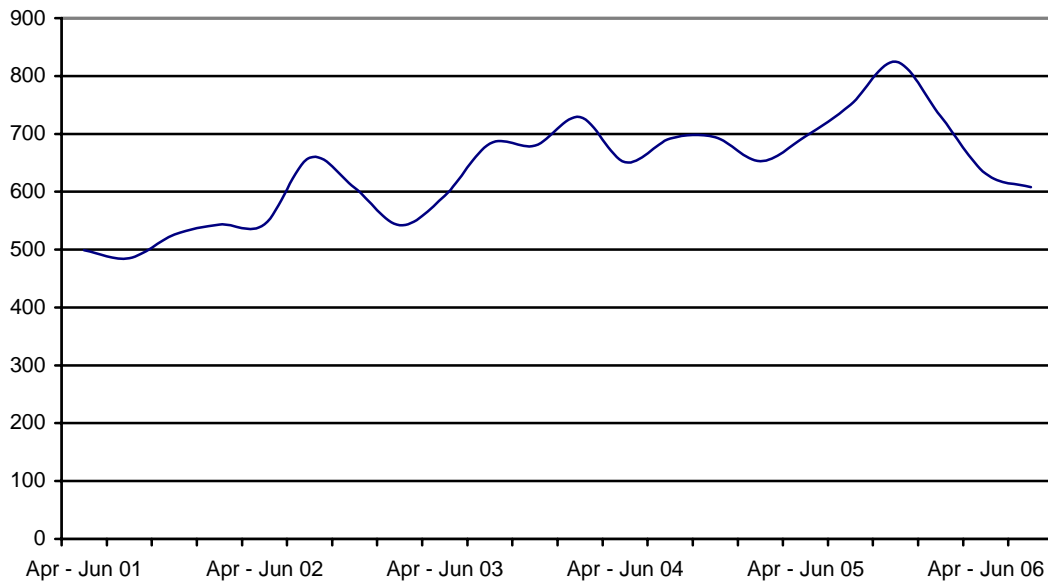
Older people	Older people may have a fear of young people and often fear that more crime is committed by young people than is actually the case.
Children and young people	Offending behaviour is one of a range of adverse outcomes that may manifest itself as a result of increased risk factors and lack of protective factors in the life of a child or young person. These are well researched and documented. Clear links with all 5 of the Every Child Matters Outcomes and the Children and Young People's Block of the LAA.
Safer Devon	Clear links to the 'RESPECT' agenda and reduction of Anti-Social Behaviour
Strong Communities	Improved quality of life for people in their communities. Children and young people valued as members of those communities and are able to make a positive contribution
Culture	
Transport and accessibility	Rurality issues affect children and young people leaving them isolated and socially excluded if lack of transport and access to services, activities etc.
Other (please specify)	

**3 Drawing on the above, what therefore is/ are the challenge(s) Devon must meet to address this issue?**

- To develop a county-wide strategy for Youth Crime Prevention
- To develop and expand early intervention capacity across Devon for children and young people aged 8-16 across Devon who are identified as 'at risk' of offending
- To develop intelligence-led targeted prevention, early intervention and diversionary activities on locality and theme-based approach informed by Strategic Assessment and other processes
- To pool and align funding streams to take this forward
- To prioritise mainstream activity and resources as appropriate to take forward youth crime prevention work on an 'invest to save' basis

## Youth Crime

### Indicator 10 - Number of Offences - YOT



Source: Devon County Council - LAA

**Devon Strategic Partnership Sustainable Community Strategy**

**Strategic Analysis Template for Evidence Base**

**Safer Devon theme analysis – Fear of Crime**

<b>Theme: Safer Devon – Fear of crime</b>
<b>Written by: Roy Tomlinson</b>
<b>Title &amp; Organisation: CSO DCC</b>
<b>Link to theme/ Devon Strategic Partnership</b> (e.g. DSP theme champion, LAA lead): Not sure if DSP has this in a theme yet

<b>Please list the key people/ organisations this response has been discussed &amp; agreed with:</b>	
SDP Officer Group	Agreed
LAA Board	

**Signed on behalf of the theme:**

**Date:**

**ISSUE No: Seven**

**TITLE OF ISSUE: Fear of Crime**

**1 Identification of Issue**

- a What is the issue for Devon?** General public perception that crime and anti-social behaviour is a bigger problem than crime data would show.
- b Who does it affect?** This fear can impede quality of life and well-being for some sections of the community.
- c Does it affect all of Devon geographically or certain parts?** Likely to be spread across most of Devon's geography. But what we don't know is how it impacts specific communities. General perception is that it is older people who are affected. But other "minority" communities are also affected and actually suffer disproportionate real crime – i.e. LGBT, BME, Learning Difficulty, Young People, Physical Disability, DV victims

**2 Justification/ demonstration of Issue**

**a How do you know the issue is there?**

**i Datasets/ indicators**

CSP public surveys for the current round of strategies for 2005/8 period conducted public and some focus group work on this. Malcolm McDonald is trawling what exists so that we can begin to develop a data set.

Nationally we have a new mandatory LAA Outcome to: "Reassure the public, reducing the fear of crime"

**ii Practitioner and expert experience of issue.**

Experience from practitioners in community safety, adult services, children and young people services, equalities work would all support the fact that fear of crime is an issue and that it is often those who suffer disproportionate levels of crime who we need to focus on

**iii Research**

Much national research on this topic but not able to list it here

**b Links to other strategies**

<b>Document or author</b>	<b>Title of document and web address?</b>	<b>How is issue raised?</b>	<b>Implications for Devon</b>
Local Area Agreement	New mandatory outcome for 2007/8 onwards	To be added to Refresh	No existing strategy or funding to deal with this issue
Regional Spatial Strategy			
District Community Strategies			
MCTi/ Parish/Town plans			
Publications from authority bodies or other organisations in this sector			
Major Research			
Central govt			
Devon Rural Strategy			
State of the South West report			
Other reports such as State of the SW Environment, SWCCIP, Govt Area profiles and neighbourhood statistics.			
Other			

**c Links to/ impact on other themes/ issues**

<b>Theme/ issue</b>	<b>Possible links to/ impact of this issue on:</b>
Environmental sustainability, including climate change and sustainable energy	
Economic sustainability	
Social sustainability e.g. community cohesiveness and individual well being	Should have wide implications for all groups whose well-being is affected
Rural issues	Rural isolation will compound fear and probably is more a feature for all groups But not sure it shows in any existing rural strategies

DRAFT FOR CONSULTATION

Housing	
Health	Will affect mental and physical health of all communities affected
Older people	Direct impact
Children and young people	Direct impact
Safer Devon	Direct impact on LAA outcome
Strong Communities	Direct impact on community cohesion
Culture	Direct impact on minority communities
Transport and accessibility	
Other (please specify)	

**3 Drawing on the above, what therefore is/ are the challenge(s) Devon must meet to address this issue**

- To establish a county-wide strategy on how to deal with this issue
- To develop a focus on those communities who disproportionately experience crime and thus have foundation for their fear
- To develop work with the older population of Devon to reduce the impact that fear can have on their quality of life
- To bridge the gap between perception, prejudice and intolerance that can influence fear of crime

**APPENDIX: Definitions**

**BCS Comparator Crime** ('British Crime Survey Comparator Crime')

The Home Office introduced this crime category in 2005/06 as a direct consequence of its intention to measure crime 'performance' by means of the British Crime Survey. The Survey reports quarterly, but the Home Office wished to monitor results at more frequent intervals. Police recorded crime statistics are reported at the end of each month and therefore provide the means by which such monitoring can be carried out.

However 'All Crime' as defined by the British Crime Survey does not match 'All Crime' as defined in the police recorded crime statistics. The Home Office has therefore selected from the police statistics the crime categories that, when combined, most closely match the British Crime Survey definition of 'All Crime'. The result is the 'BCS Comparator Crime' category. Details of the individual categories included are given below.

**Violent Crimes**

Classification	Description
<b>Wounding</b>	
005	Wounding and Other Acts Endangering Life
008A	Other Wounding
008D	Racially or Religiously Aggravated Other Wounding
<b>Common Assault</b>	
104	Assault Police
105A	Common Assault
105B	Racially or Religiously Aggravated Common Assault
<b>Robbery</b>	
034B	Robbery of Personal Property

**Theft and associated offences**

Classification	Description
Burglary Dwelling	
028	Burglary Dwelling
029	Aggravated Burglary Dwelling
Theft of a Vehicle	
0372	Aggravated Vehicle Taking
048	Theft or Unauthorised Taking of a Vehicle
Theft from a Vehicle	
045	Theft from a Vehicle
Theft of a Pedal Cycle	
44	Theft of Pedal Cycles
Vehicle Interference or tampering	
126	Vehicle Interference
Theft from Person	
39	Theft from the Person

**Criminal damage and associated offences**

Classification	Description
Criminal Damage	
056	Arson
058A	Criminal Damage to Dwellings
058B	Criminal Damage to Other Buildings
058C	Criminal Damage to Vehicles
058D	Other Criminal Damage
058E	Racially or Religiously Aggravated Criminal Damage to Dwellings
058F	Racially or Religiously Aggravated Criminal Damage to Other Buildings
058G	Racially or Religiously Aggravated Criminal Damage to Vehicles
058H	Other Racially or Religiously Aggravated Criminal Damage

**Definition of Offences (obtained from the British Crime Survey 2004/05)**

The following offences have been selected as their meaning may not be immediately apparent.

**Common Assault**

In the BCS a common assault is one where the victim was punched, kicked, pushed or jostled but the incident did not result in an injury, or the injury was negligible.

**Robbery**

An incident or offence in which force or the threat of force is used either during or immediately prior to a theft or attempted theft.

### **Burglary Dwelling**

An offence of burglary is recorded by the police if a person enters any building as a trespasser and with intent to commit an offence of theft, rape, grievous bodily harm or unlawful damage. Burglary does not necessarily involve forced entry nor does it cover theft by a person who is entitled to be in the dwelling at the time of the offence. The dwelling is a house, flat or any connected outhouse or garage.

### **Aggravated (Racially/ Religiously) –Citizen’s Advice Bureau definition**

An offence is racially or religiously aggravated if, at the time it is committed, the offender is insulting about the victim's membership (or presumed membership) of a racial or religious group, or the offence is motivated by hostility towards members of a particular racial or religious group.

Racially motivated attacks and religiously motivated attacks are attacks which are carried out because of someone's racial or ethnic origin, or their religion or lack of religion. They include the following:-

a physical attack on a person or family by another person or group of people

an attack on a person's or family's home or property, for example, breaking a window, throwing an object through a letter box or setting a car alight

verbal abuse or threats

written abuse, for example, a letter, pamphlet, email or telephone text message

an abusive slogan painted on a wall or building

### **Theft from a vehicle**

Theft from a vehicle (i.e. theft of parts, accessories or contents) includes attempts if there is evidence of intent to commit theft from a vehicle. If such evidence does not exist then an offence of vehicle interference is recorded.

### **Theft from the Person**

Theft from the Person can be defined as theft (including attempts) of a purse, wallet, cash etc direction from the person of the victim but without physical force or the threat of it.

### **Criminal Damage**

Criminal Damage result from any person who without lawful excuse destroys or damages any property belonging to another, intent to destroy or damage any such property or being reckless as to whether any such property would be destroyed or damaged

### **Vehicle Interference or Tampering**

This includes offences where there is evidence of intent to commit either theft of or from a vehicle or taking without consent (TWOC), but there is either a) no evidence of intent commit one of these three offences specifically or b) there is evidence of intent to commit TWOC.

### **Wounding**

There are two types of wounding classifications. The more serious are those offences committed with the intention to do grievous bodily harm and are classified as 'wounding or other act endangering life'. Those of assault occasioning actual bodily harm are classified in the 'other wounding' category. The BCS definition is similar: wounding is a category of comparable violence that includes serious 'wounding' involving intentionally inflicted severe injuries and 'other wounding' involving less serious injury or severe injuries inflicted unintentionally.

### **Other definitions**

#### **Domestic Abuse**

Any incident of threatening behaviour, violence or abuse (psychological, physical, sexual, financial or emotional) between adults who are or who have been intimate partners or family members, regardless of gender (used by the Metropolitan police service)

#### **Brought to Justice**

A recorded offence (i.e. those notified to the Home Office) convicted or TIC'd (taken into consideration) at court or cautioned by the Police.

#### **Problem Drug User**

One definition (Scottish Drug Misuse Database) is 'any person who experiences social, psychological, physical or legal problems related to intoxication and/ or dependence as a consequence of his/ her own use of drugs or chemical substances'

#### **Anti-Social Behaviour**

A legal definition of behaving in an anti-social manner is found in the Crime and Disorder Act 1998 and many agencies tackling anti-social behaviour have adopted this definition for more general purposes. It defines anti-social behaviour as 'acting in an anti-social manner as a manner that caused or was likely to cause harassment, alarm or distress to one or more persons not of the same household as the complainant'.

#### **Youth Crime**

Crime committed by those aged 10 to 17 years old.