

DCC

ASSAULT WITH LESS SERIOUS INJURY
Version 1

National Indicator 20

2010/11 Quarter 1 (April to June 2010)

TARGET

***NI 20 – a reduction in the 2008/09 base rate of 3% by 2010/11
(based on Mid Year Estimate 2008)***

The change in the target is due to a change in recording which means that data prior to April 2008 can not be compared with subsequent data.

DCC	NI 20	Baseline 2008/09	Interim 2009/10	Final 2010/11
TARGET	Count	3710	3677*	3599*
	Rate/ 1000 population	4.95	4.88	4.80
PREDICTION	Count	3710	3296	3146
	Rate/ 1000 population	4.95	4.37	4.17
		MYE 2007		MYE 2008

**MYE – Mid Year Estimate*

The target rates in this report have been calculated using the MYE 2007 and these will remain static.

As more up to date mid year estimates are received the number of offences needed to achieve the rates will be adjusted in order to maintain the above rates.

*** adjusted using the MYE 2008**

CONTENTS

Targets

1. Is DCC on course to meet its NI 20 target?
2. Are the districts on course to meet their NI 20 targets?

Other

3. Assaults with less serious injury (NI20) by year
4. NI 20 by quarter
5. Monthly (peaks) NI 20
6. Assault with less serious injury (NI 20) by peak time * not updated
7. Assault with less serious injury (NI 20) by weather conditions *no relationship found

Appendix

- Individual districts and NI 20

TARGETS

1. Is DCC on course to meet its NI 20 target?

The table below confirms that DCC is on course to achieve both its interim and final targets.

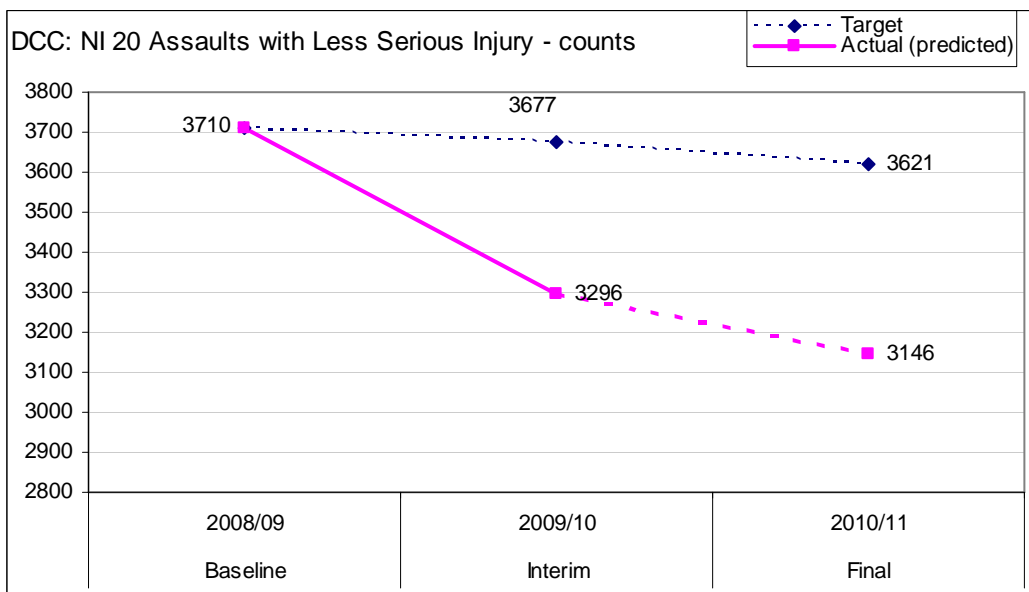
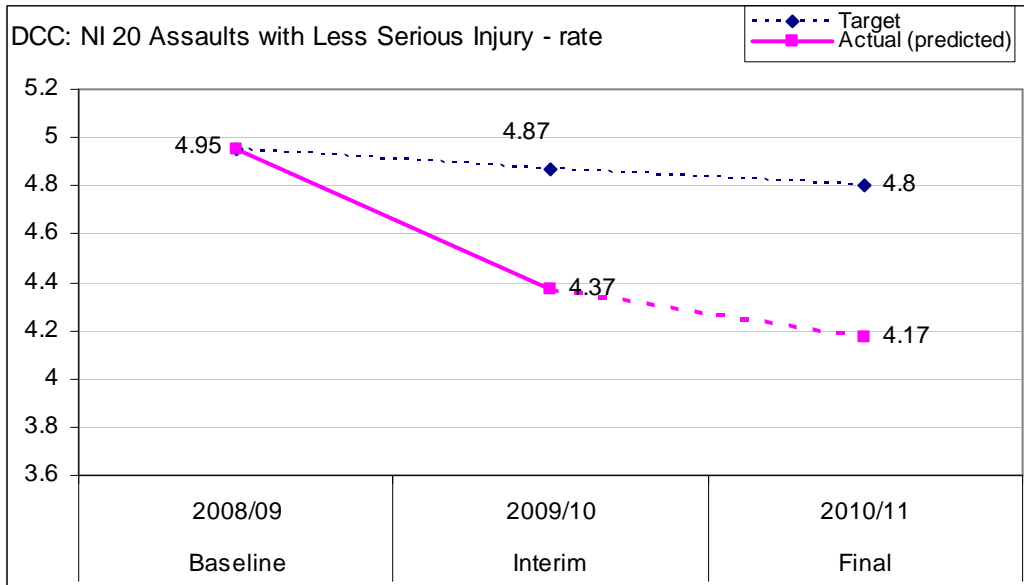
NI 20		Baseline 2008/09	Interim 2009/10	Final 2010/11
Target	Count	3710	3677	3621
	Rate/ 1000	4.95	4.87	4.80
Actual (predicted)	Count		3296	839 (3146)
	Rate/ 1000		4.37	1.11 (4.17)

The first two graphs show simply the results in each year. Potentially the target can be achieved in Year 3 despite fails in the previous years. This chart shows each year independently.

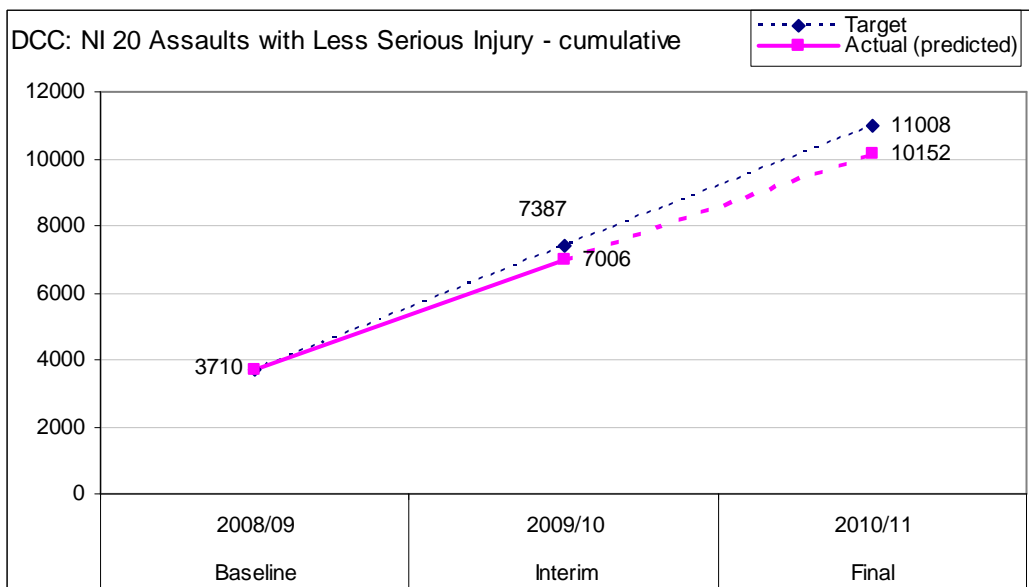
The second graph shows cumulative results. Each year/ quarter impacts on the next and fails in previous years/quarters can negate achievement in latter years or vice versa.

(The dotted line indicates the figure to the right is a prediction for the year)

- In both the interim year 2009/10 and 2010/11 Q1 the actual and predicted counts/ rates for the whole year are well within the target.



The graph below shows the cumulative figure and confirms the achievement of target with the actual figure to date being well within the target figures.



2. Are the districts on course to meet their targets?

District Data

The following table summarises the baselines, targets and actual data to date for each of the districts. T

The predicted counts and rates are based on the average proportion of offences (out of the total) seen in the last five years to date e.g. In the last 5 years DCC saw an average of 27% of its total ASLI occurring by the end of the first quarter).

- All districts are on course to meet the interim target with most achieving the final target as well.

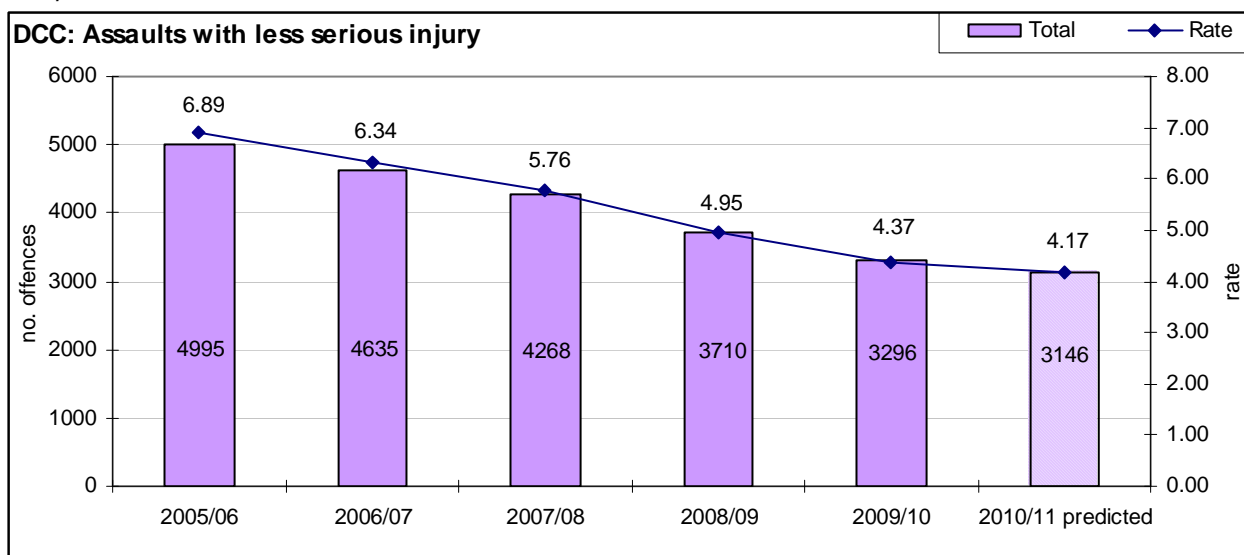
	Baseline 2008/09		Interim 2009/10			
	count	rate	actual		2009/10 target	
			count	rate	count	rate
East Devon	566	4.28	477	3.59	559	4.21
Exeter	905	7.39	819	6.63	899	7.28
Mid Devon	321	4.23	268	3.49	320	4.17
North Devon	600	6.51	551	5.97	592	6.42
South Hams	266	3.19	237	2.84	262	3.14
Teignbridge	557	4.39	526	4.12	552	4.33
Torridge	308	4.74	258	3.93	306	4.67
West Devon	187	3.59	160	3.02	187	3.54
DCC	3710	4.95	3296	4.37	3677	4.87
	MYE 07		MYE 08			

	Final 2010/11						
	Actual Q1		Year Prediction		Target		On course to achieve target
	count	rate	count	rate	count	rate	
East Devon	136	1.02	511	3.85	551	4.15	yes
Exeter	192	1.55	706	5.71	886	7.17	yes
Mid Devon	74	0.96	282	3.67	315	4.1	yes
North Devon	153	1.66	564	6.11	583	6.32	yes
South Hams	45	0.54	169	2.03	258	3.09	yes
Teignbridge	137	1.07	508	3.98	544	4.26	yes
Torridge	62	0.95	248	3.78	302	4.6	yes
West Devon	40	0.76	158	2.99	184	3.48	yes
DCC	839	1.11	3146	4.17	3621	4.8	yes
	MYE 08						

OTHER

3. Assault with less serious injury (NI 20) by year

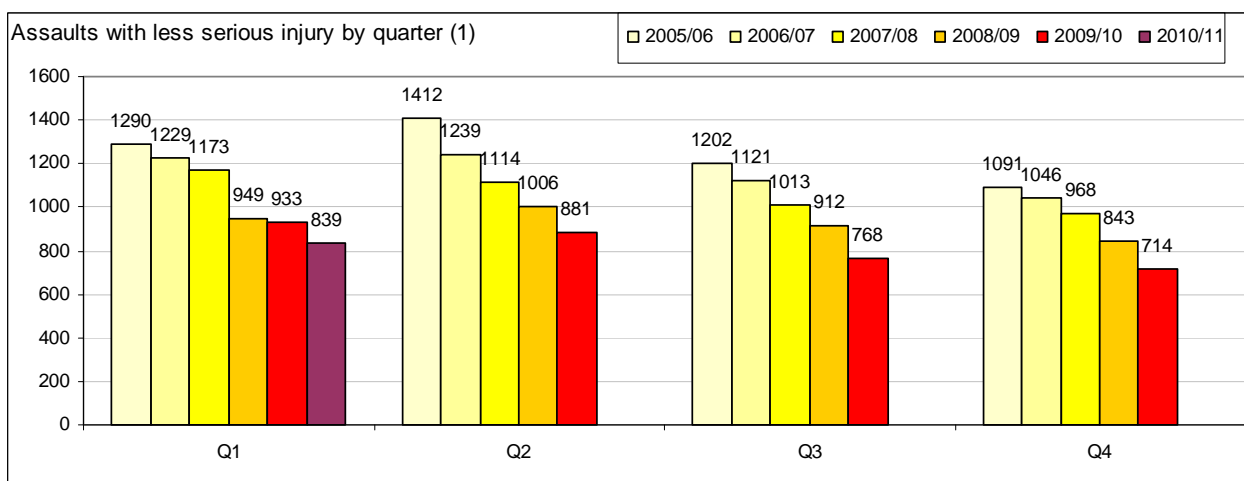
The graph below shows the falling number of 'assaults with less serious injury' to a six year low predicted in 2010/11.

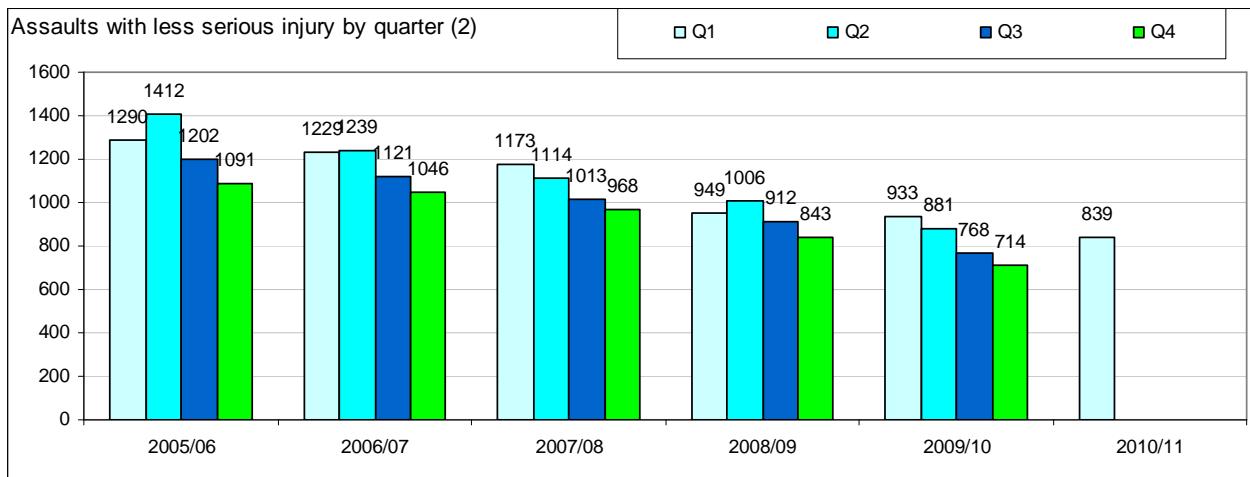


4. Assault with less serious injury (NI 20) by quarter

The graphs below show:

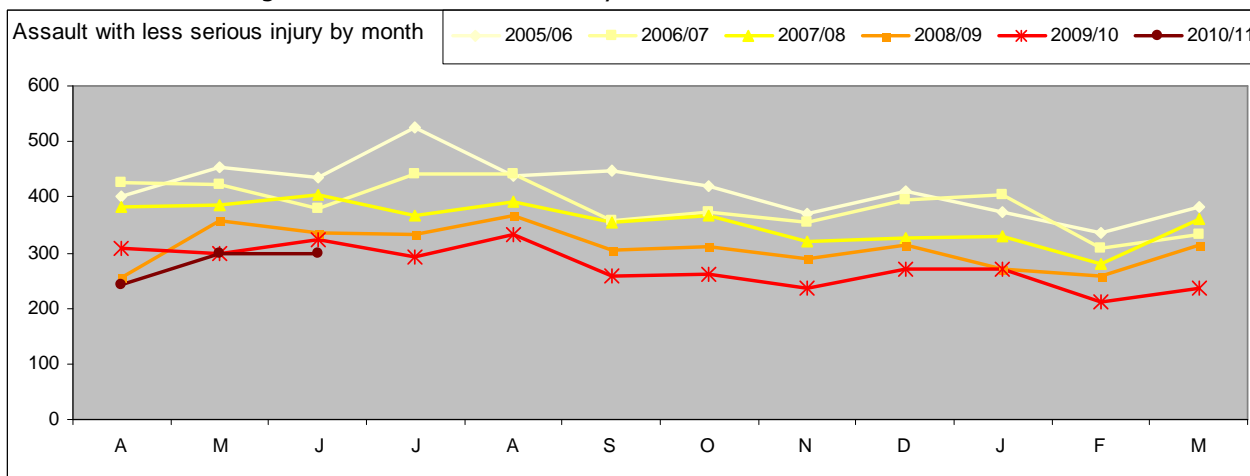
- Recently (two out of the last three years) quarter 1 i.e. April to June (inc.) has seen the most offences closely followed by Q2 i.e. July to September.
- Given the above it could be expected that the number of offences will not exceed 839 in each of the quarters in 2010/11.
- Quarter 4 i.e. January to March has seen the fewest offences.
- The fall in quarterly figures is further illustrated





5. Assault with less serious injury (NI 20) by monthly seasonal

The graph below plots the monthly data to give an idea of the peak months. In very general terms levels are fairly consistent, comparatively high between April and August and then fall to comparatively lower levels for the remaining months to a low in February.



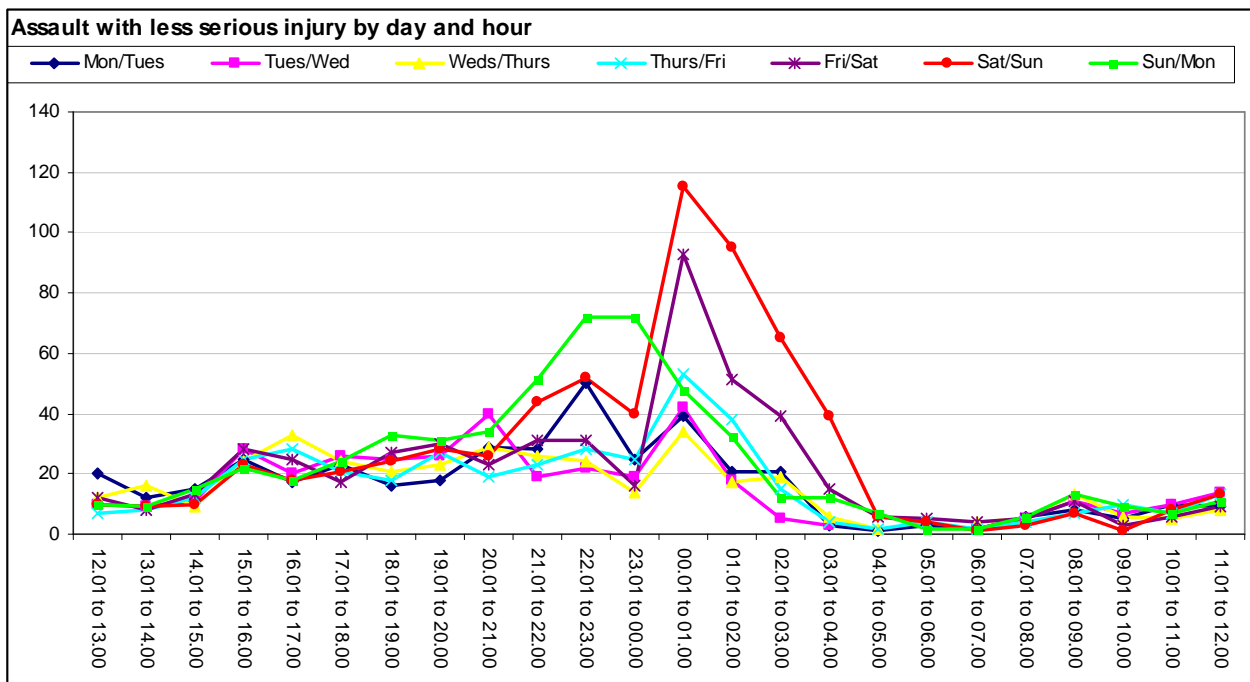
6. Assault with less serious injury (NI 20) by peak time – *this data has not been updated this quarter – it still reflects the year 2009/10 only*

The charts below illustrate the peak times of offending. The analysis is very basic in this report however if lower geographies e.g. district or Devon Town **are requested** the results are more accurate.

The analysis below simply uses start date and time whereas at lower geographies the duration of the offence can be taken into account.

- Interestingly the time of offending peaks at between 00.01 and 01.00 on both Fri/ Sat night and Sat/Sun night though the latter offending period is longer.

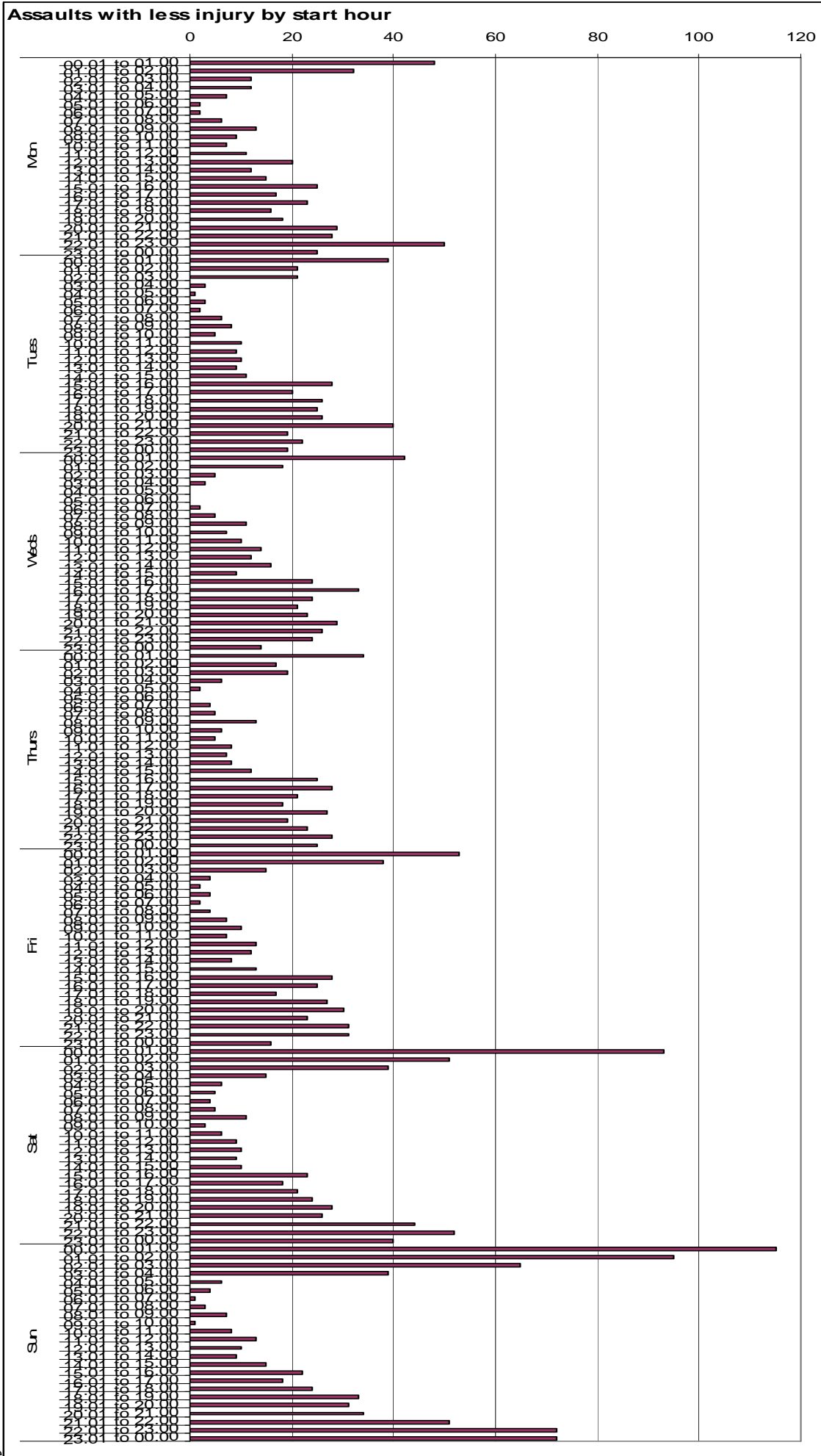
- There are a notable number of offences on Sun/Mon however the offending period is two hours earlier than the previous two nights.
- Offending drops dramatically at 04.00 on all days.
- From 10 am onwards there is a slow rise to 12 mid day followed by a fall around 1pm to 3pm and then a rise into the evening with offending at similar levels on all days between 4pm and 8pm.



Cells contain the number of offences starting on the given day in the given hour. It does not take into account duration of the offence. The darker the colour coding the more offences seen.

	Mon/Tues	Tues/Wed	Weds/Thurs	Thurs/Fri	Fri/Sat	Sat/Sun	Sun/Mon	Grand Total
12.01 to 13.00	20	10	12	7	12	10	10	81
13.01 to 14.00	12	9	16	8	8	9	9	71
14.01 to 15.00	15	11	9	12	13	10	15	85
15.01 to 16.00	25	28	24	25	28	23	22	175
16.01 to 17.00	17	20	33	28	25	18	18	159
17.01 to 18.00	23	26	24	21	17	21	24	156
18.01 to 19.00	16	25	21	18	27	24	33	164
19.01 to 20.00	18	26	23	27	30	28	31	183
20.01 to 21.00	29	40	29	19	23	26	34	200
21.01 to 22.00	28	19	26	23	31	44	51	222
22.01 to 23.00	50	22	24	28	31	52	72	279
23.01 to 00.00	25	19	14	25	16	40	72	211
00.01 to 01.00	39	42	34	53	93	115	48	424
01.01 to 02.00	21	18	17	38	51	95	32	272
02.01 to 03.00	21	5	19	15	39	65	12	176
03.01 to 04.00	3	3	6	4	15	39	12	82
04.01 to 05.00	1		2	2	6	6	7	24
05.01 to 06.00	3			4	5	4	2	18
06.01 to 07.00	2	2	4	2	4	1	2	17
07.01 to 08.00	6	5	5	4	5	3	6	34
08.01 to 09.00	8	11	13	7	11	7	13	70
09.01 to 10.00	5	7	6	10	3	1	9	41
10.01 to 11.00	10	10	5	7	6	8	7	53
11.01 to 12.00	9	14	8	13	9	13	11	77

Note the graph overleaf is only intended to give a vague representation of when there are more offences. The quality of the graph is unfortunately not very good.



7. Assault with less serious injury (NI 20) by weather conditions

Various weather conditions including maximum temperature, minimum temperature and rainfall have been plotted on a monthly basis against incidents of Assault with less serious injury but no relationship found.

APPENDIX

- **Individual districts and NI 20**

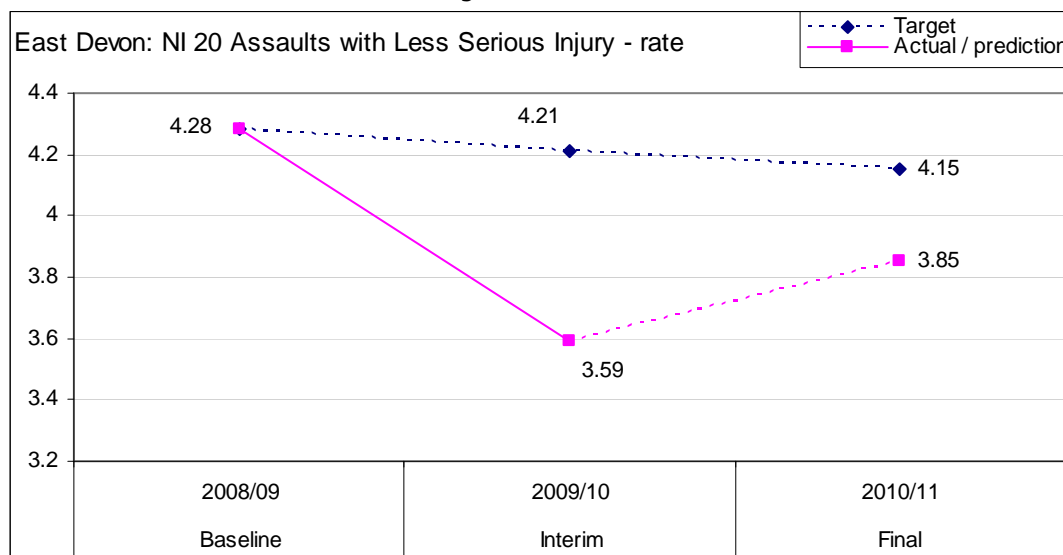
** note all figures in brackets or linked by dotted lines (in graphs) show predicted yearly figures*

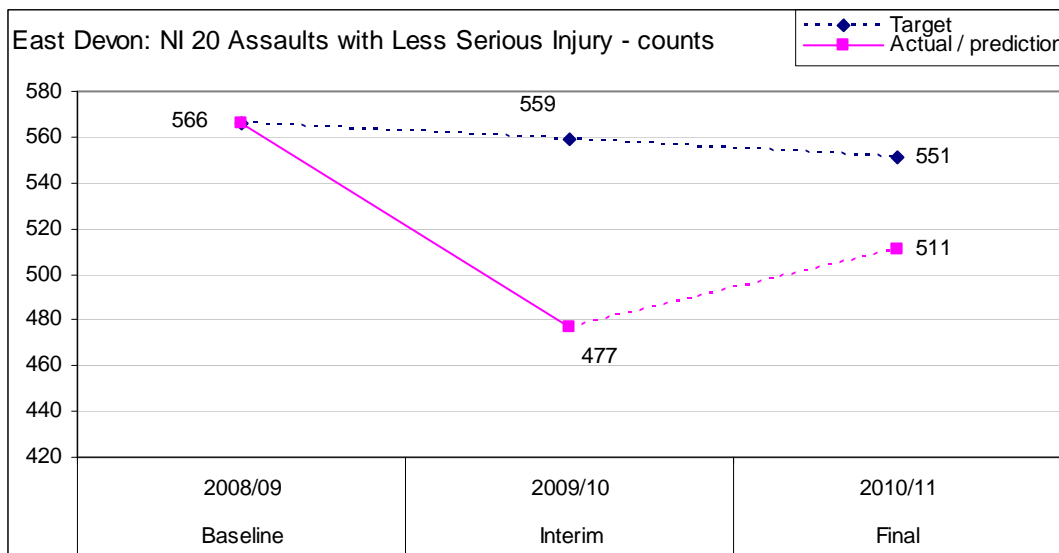
Is East Devon on course to meet its target?

The table below confirms that East Devon is on course to achieve its final target.

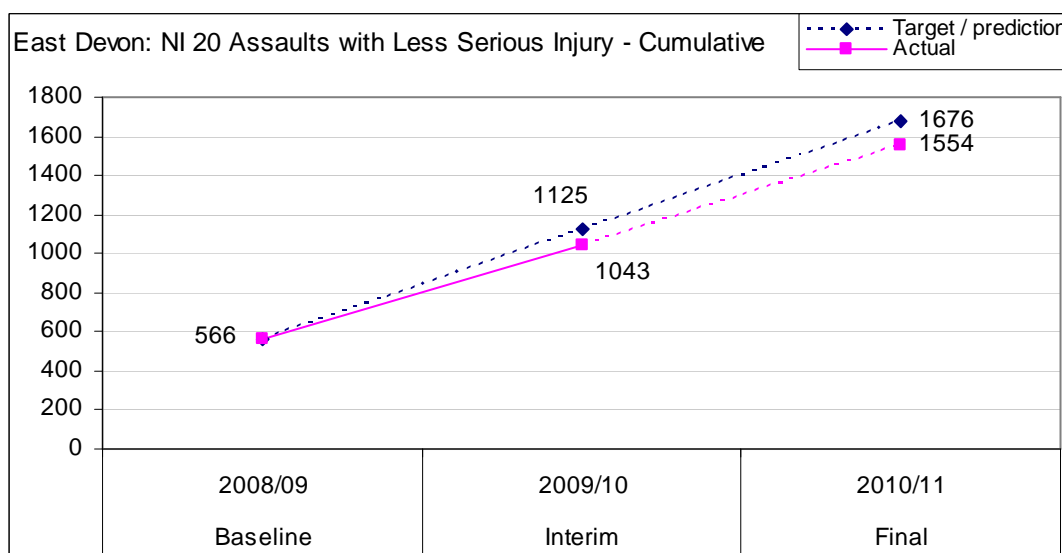
NI 20		Baseline 2008/09	Interim 2009/10	Final 2010/11
Target	Count	566	559	551
	Rate/ 1000	4.28	4.21	4.15
Actual (predicted)	Count		477	136 (511)
	Rate/ 1000		3.59	1.02 (3.85)

- The predicted rate for 2010/11 is 3.85 offences per 1000 people which is within the target of 4.15.
- The number of offences seen to date in 2010/11 is 136 which gives a predicted figure of 511 offences which is well within the final target of 551 offences.





The graph below shows the cumulative figure and confirms the achievement of target with the actual figure to date being well within the target figures.

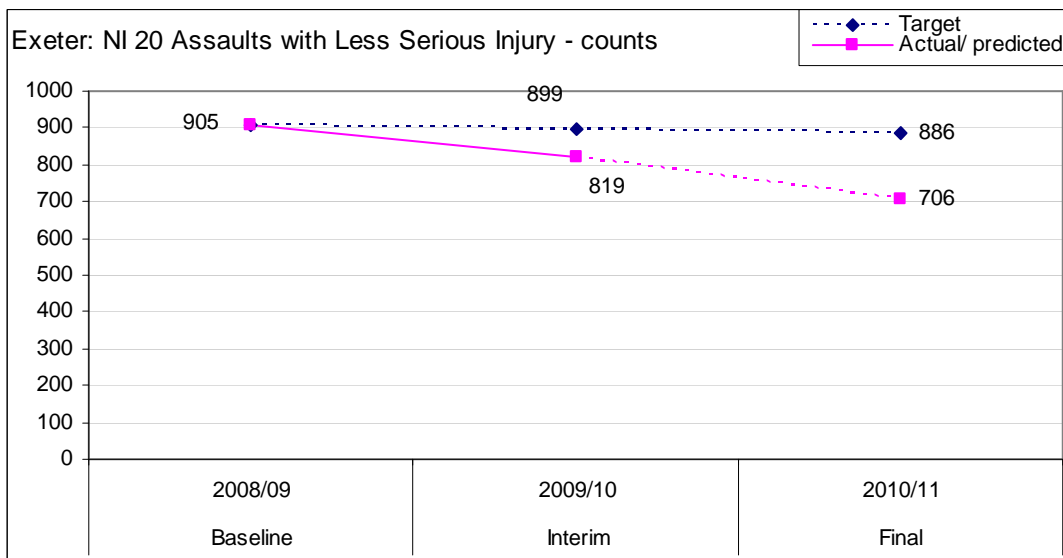
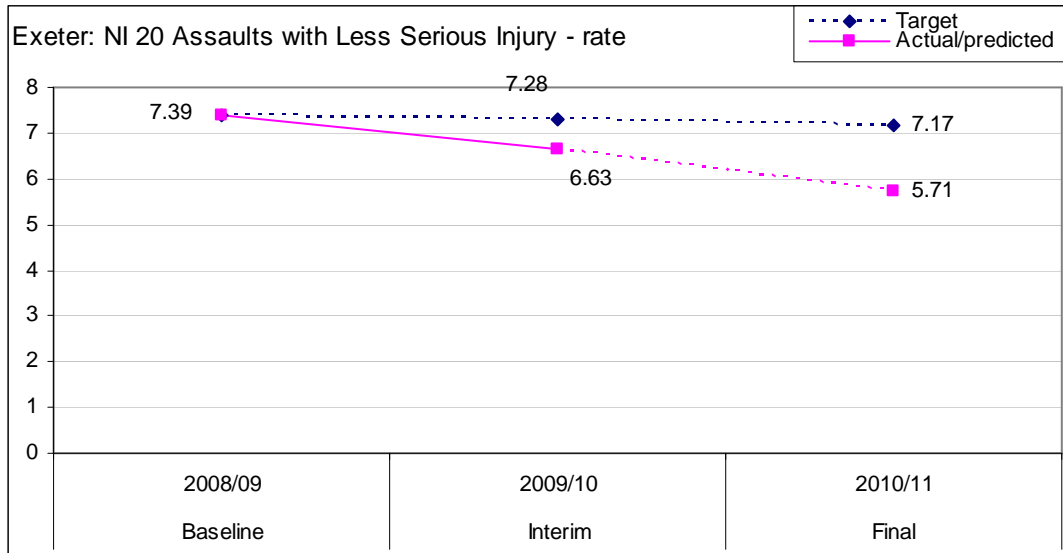


Is Exeter on course to meet its target?

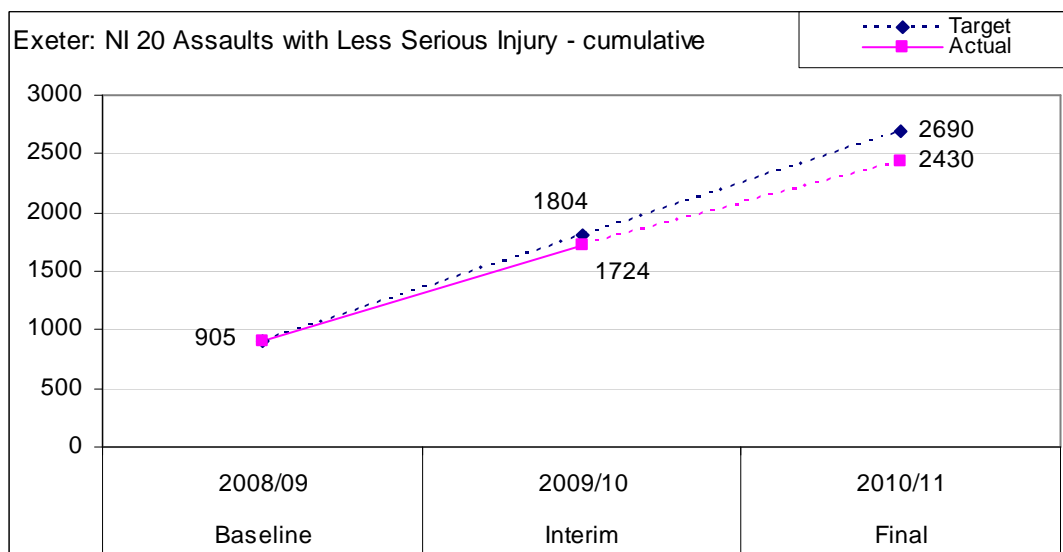
The table below confirms that Exeter is on course to achieve its final target.

NI 20		Baseline 2008/09	Interim 2009/10	Final 2010/11
Target	Count	905	899	886
	Rate/ 1000	7.39	7.28	7.17
Actual (predicted)	Count		819	192 (706)
	Rate/ 1000		6.63	1.55 (5.71)

- The number of offences seen to date in 2010/11 is 192 which leads to a predicted year figure of 706 which is well within the target of 886.
- The corresponding predicted rate of 5.71 offences per 1000 people is also within the target of 7.17.



The graph below shows the cumulative figure and confirms the achievement of target with the actual figure to date being well within the target figures.

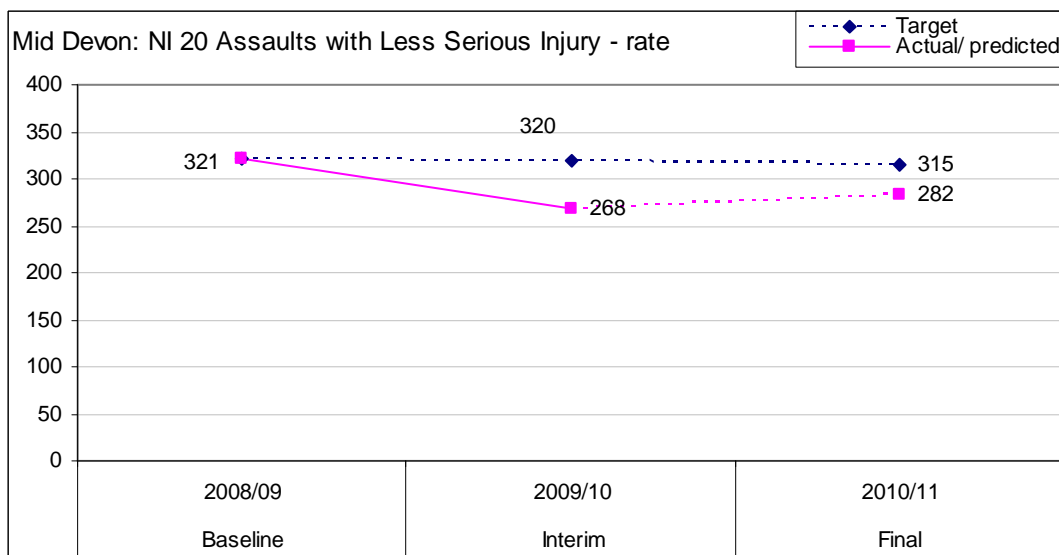
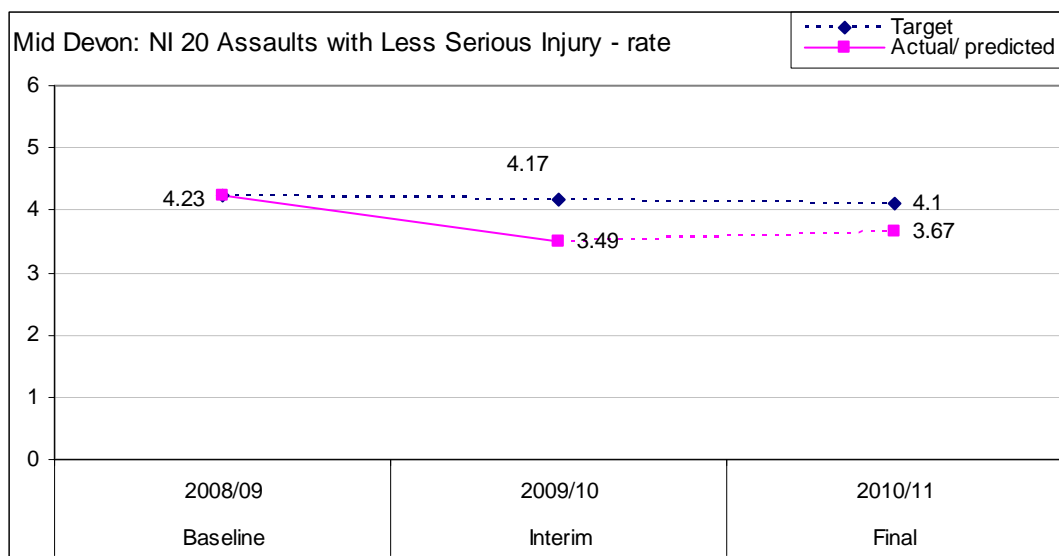


Is Mid Devon on course to meet its target?

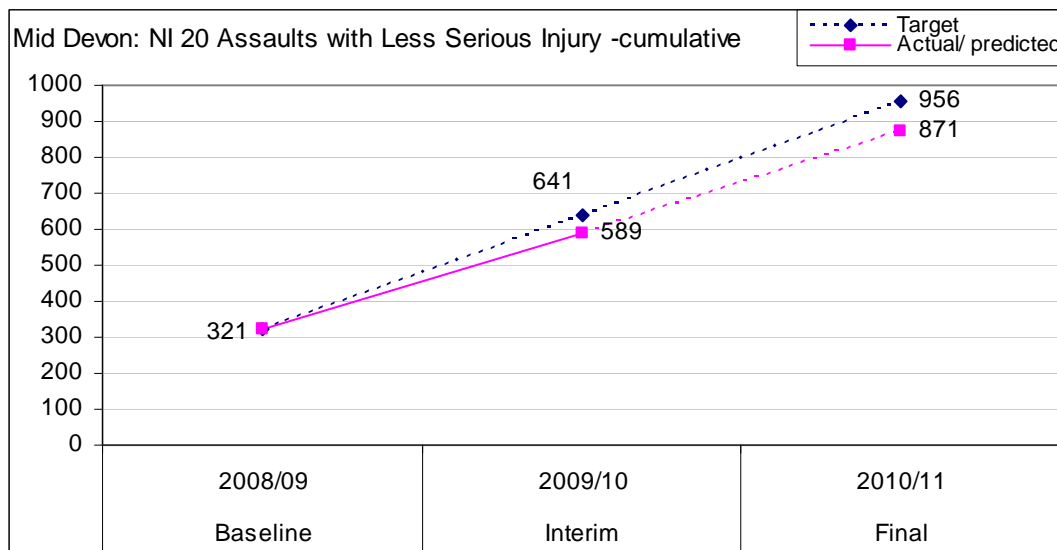
The table below confirms that Mid Devon is on course to achieve its final target.

NI 20		Baseline 2008/09	Interim 2009/10	Final 2010/11
Target	Count	321	320	315
	Rate/ 1000	4.23	4.17	4.10
Actual/ predicted	Count		268	74 (282)
	Rate/ 1000		3.49	0.96 (3.67)

- The number of offences seen to date in 2010/11 is 74 which leads to a predicted year figure of 282 which is well within the target of 315.
- The corresponding predicted rate of 3.67 offences per 1000 people is also within the target of 4.10.



The graph below shows the cumulative figure and confirms the achievement of target with the actual figure to date being well within the target figures.

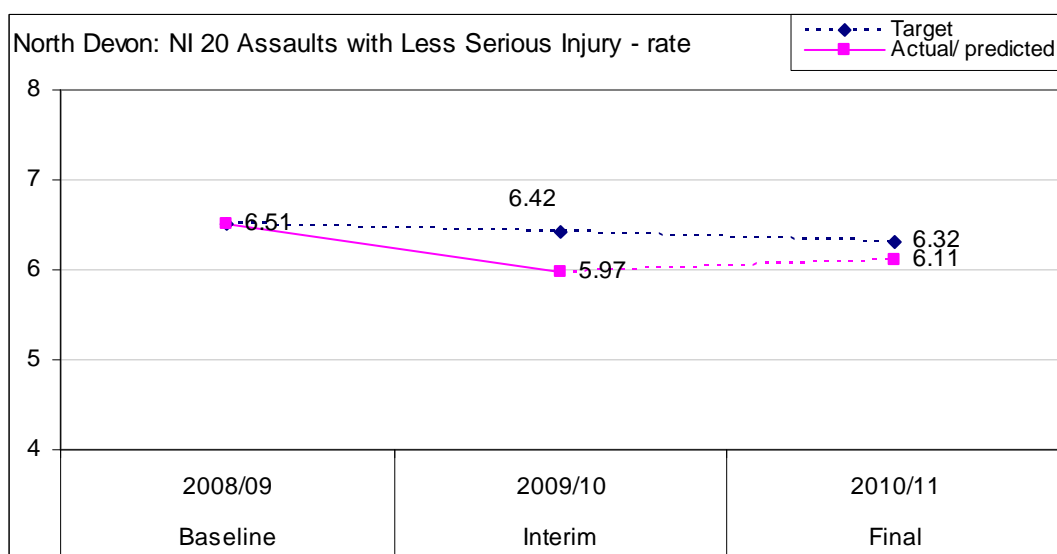


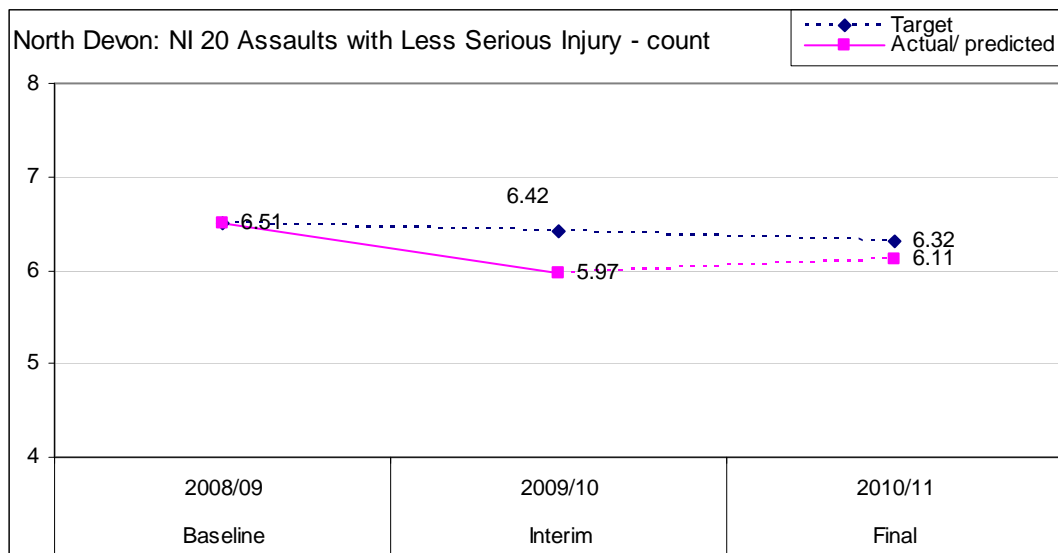
Is North Devon on course to meet its target?

The table below confirms that North Devon is on course to achieve its final target.

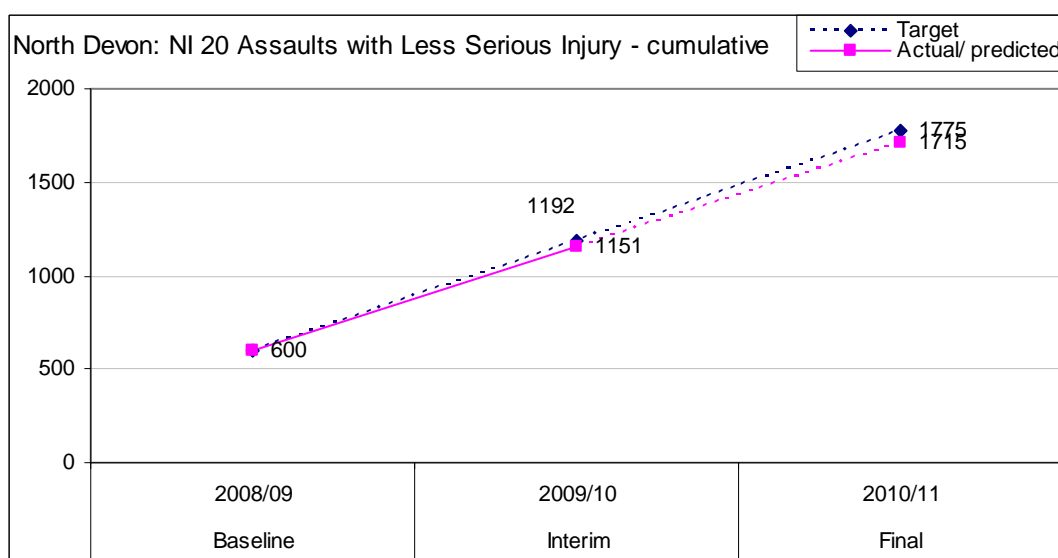
NI 20		Baseline 2008/09	Interim 2009/10	Final 2010/11
Target	Count	600	592	583
	Rate/1000	6.51	6.42	6.32
Actual	Count		551	153 (564)
	Rate/ 1000		5.97	1.66 (6.11)

- The number of offences seen to date in 2010/11 is 153 which leads to a predicted year figure of 564 which is well within the target of 315 though an increase on 2009/10.
- The corresponding predicted rate of 6.11 offences per 1000 people is also within the target of 6.32 but is a rise on last year.





The graph below shows the cumulative figure and confirms the achievement of target with the actual figure to date being well within the target figures.

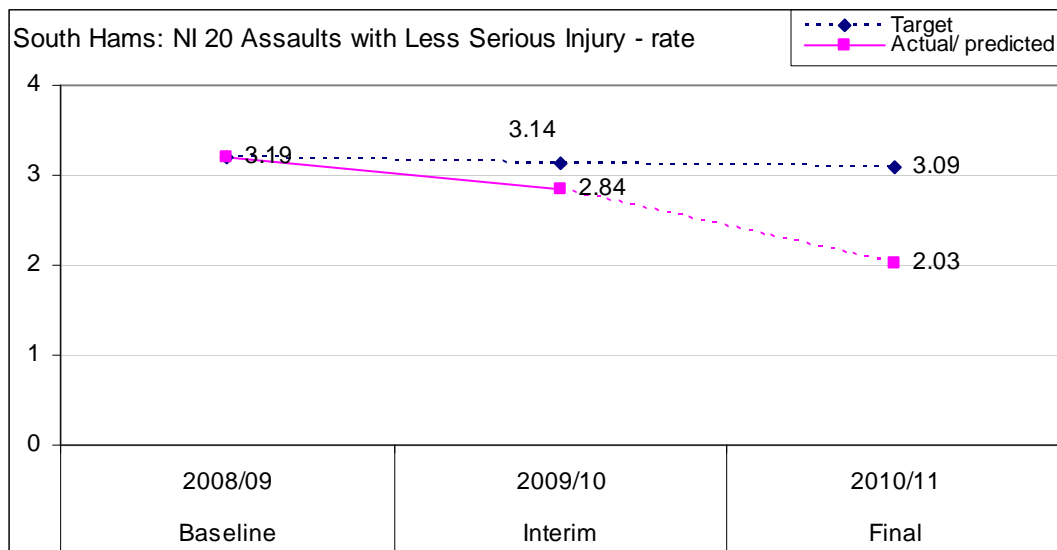


Is South Hams on course to meet its target?

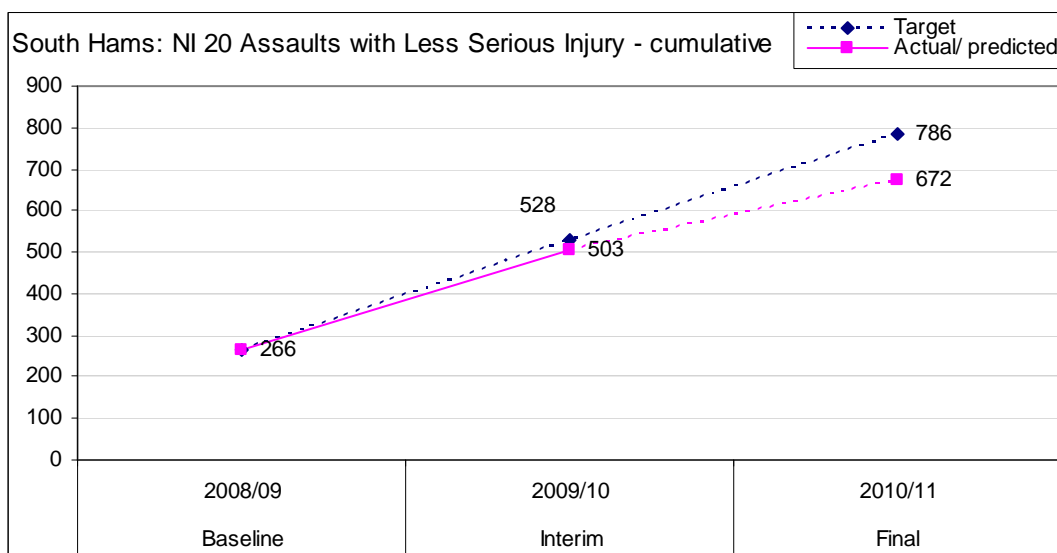
The table below confirms that South Hams is on course to achieve its final target.

NI 20		Baseline 2008/09	Interim 2009/10	Final 2010/11
Target	Count	266	262	258
	Rate/1000	3.19	3.14	3.09
Actual/ predicted	Count		237	45 (169)
	Rate/ 1000		2.84	0.54 (2.03)

- The number of offences seen to date in 2010/11 is 45 which leads to a predicted year figure of 169 which is well within the target of 258.
- The corresponding predicted rate of 2.03 offences per 1000 people is also within the target of 3.09.



The graph below shows the cumulative figure and confirms the achievement of target with the actual figure to date being well within the target figures.

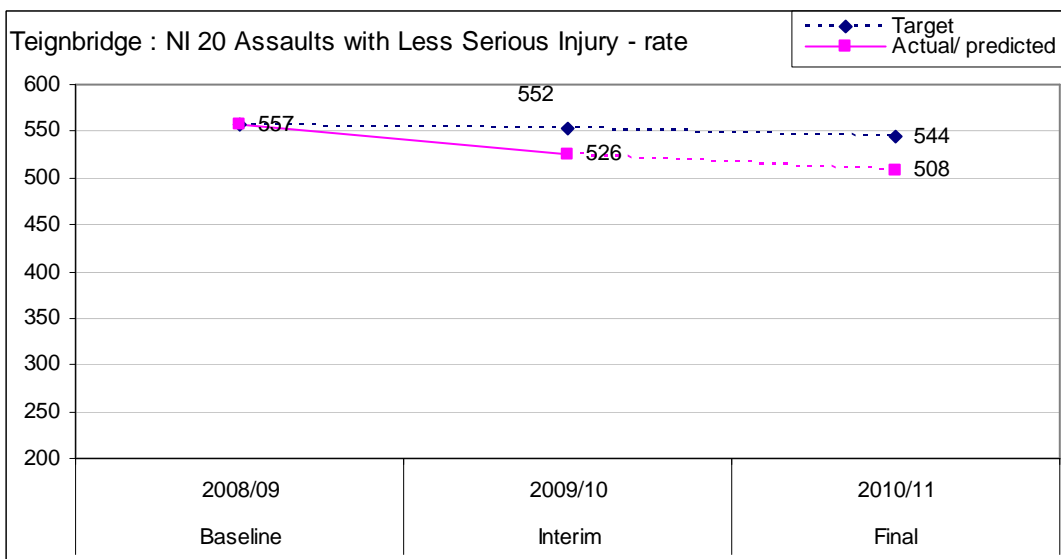
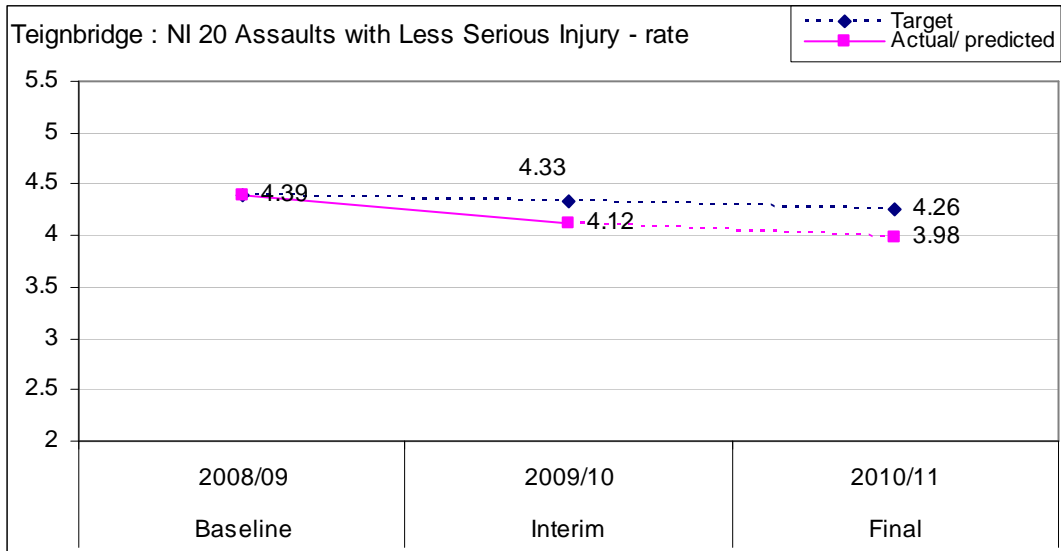


Is Teignbridge on course to meet its target?

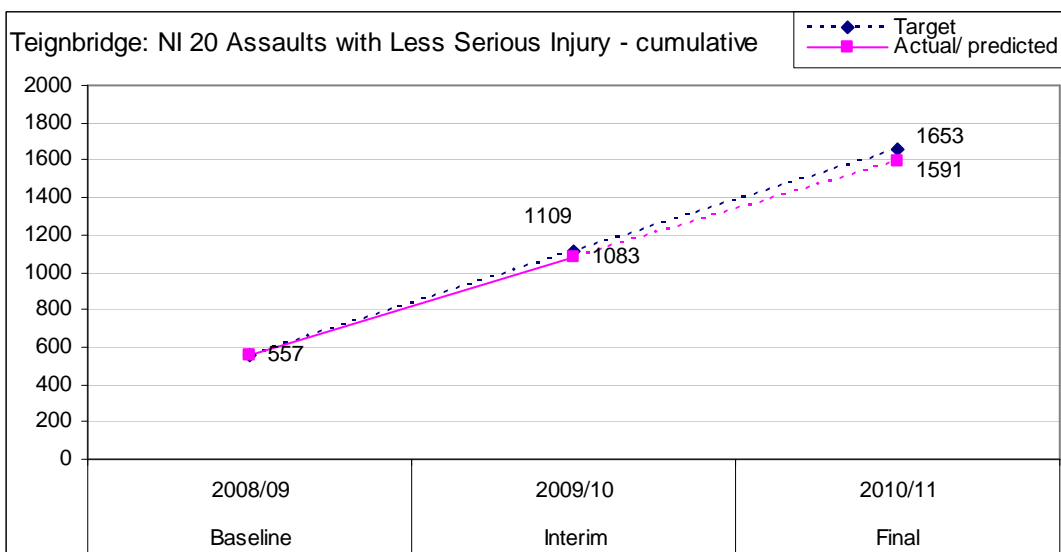
The table below confirms that Teignbridge is on course to achieve its final target.

NI 20		Baseline 2008/09	Interim 2009/10	Final 2010/11
Target	Count	557	552	544
	Rate/1000	4.39	4.33	4.26
Actual	Count		526	137 (508)
	Rate/ 1000		4.12	1.07(3.98)

- The number of offences seen to date in 2010/11 is 137 which leads to a predicted year figure of 508 which is well within the target of 544.
- The corresponding predicted rate of 3.98 offences per 1000 people is also within the target of 4.26.



The graph below shows the cumulative figure and confirms the achievement of target with the actual figure to date being well within the target figures.

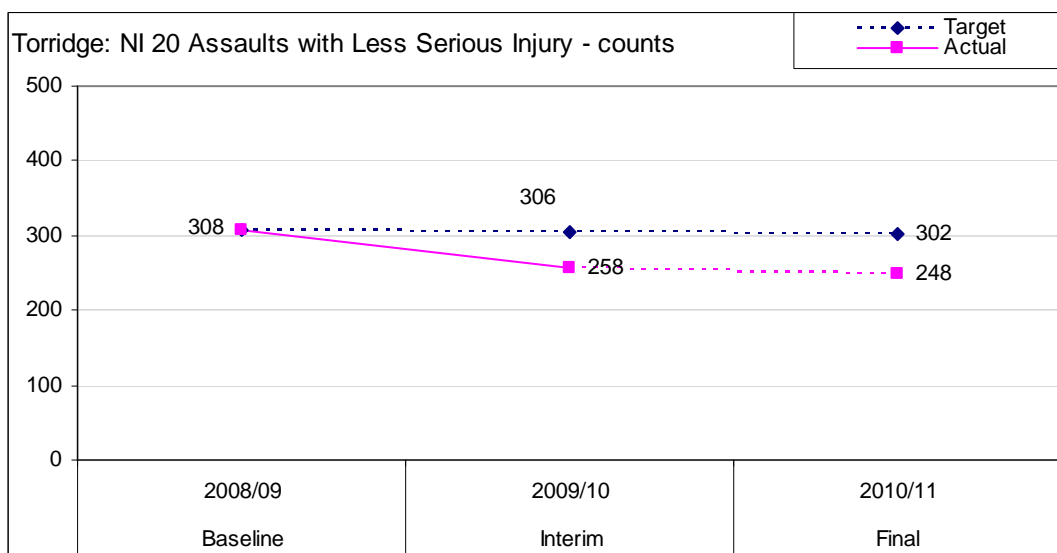
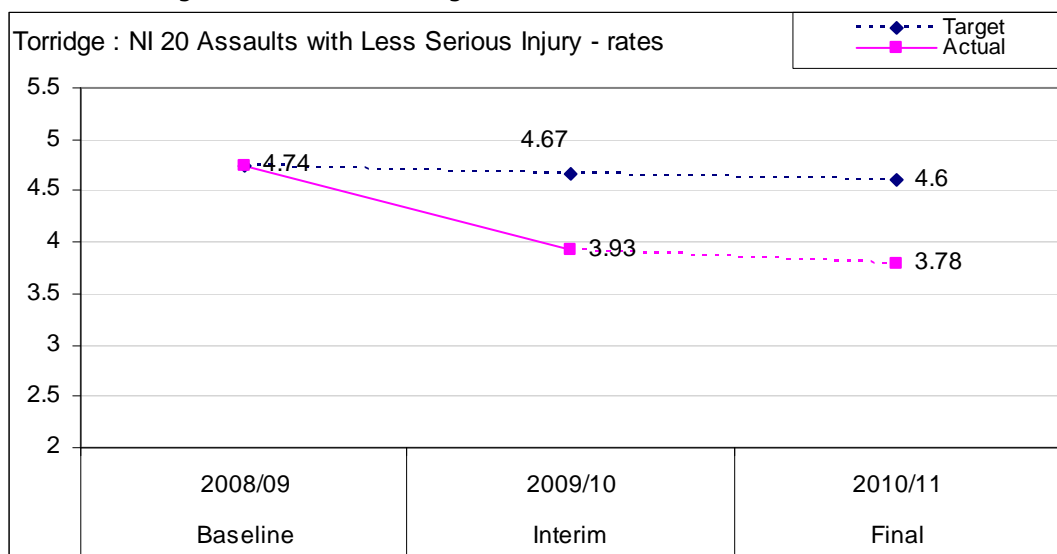


Is Torridge on course to meet its target?

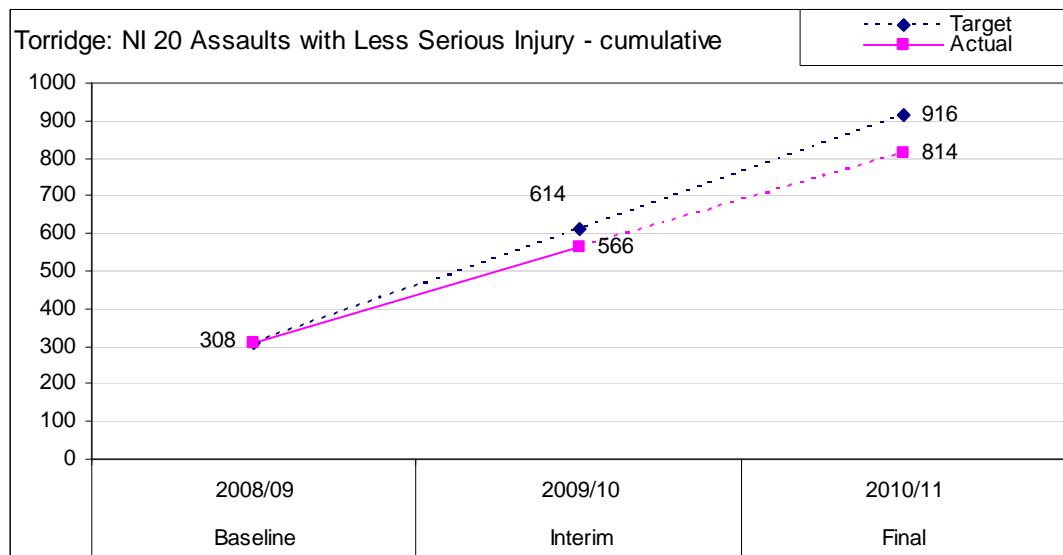
The table below confirms that Torridge is on course to achieve its final target.

NI 20		Baseline 2008/09	Interim 2009/10	Final 2010/11
Target	Count	308	306	302
	Rate/1000	4.74	4.67	4.60
Actual	Count		258	62 (248)
	Rate/ 1000		3.93	0.95 (3.78)

- The number of offences to date in 2010/11 is 62 which leads to a predicted figure of 248 for the year which is well within the target.
- The corresponding rate of 0.95 offences per 1000 people leads to a predicted rate for the year of 3.78 which is again well within the target.



The graph below shows the cumulative figure and confirms the achievement of target with the actual figure to date being well within the target figures.

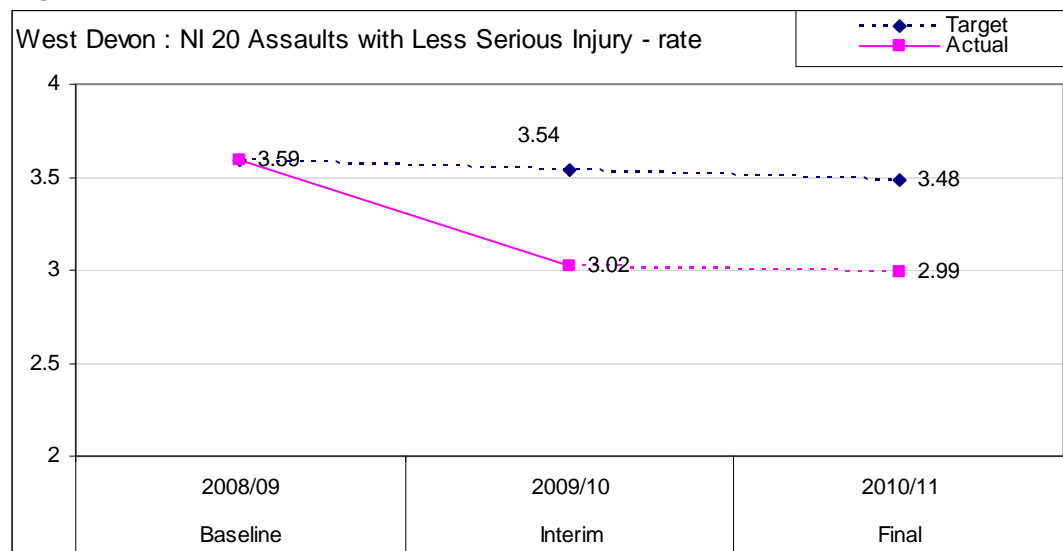


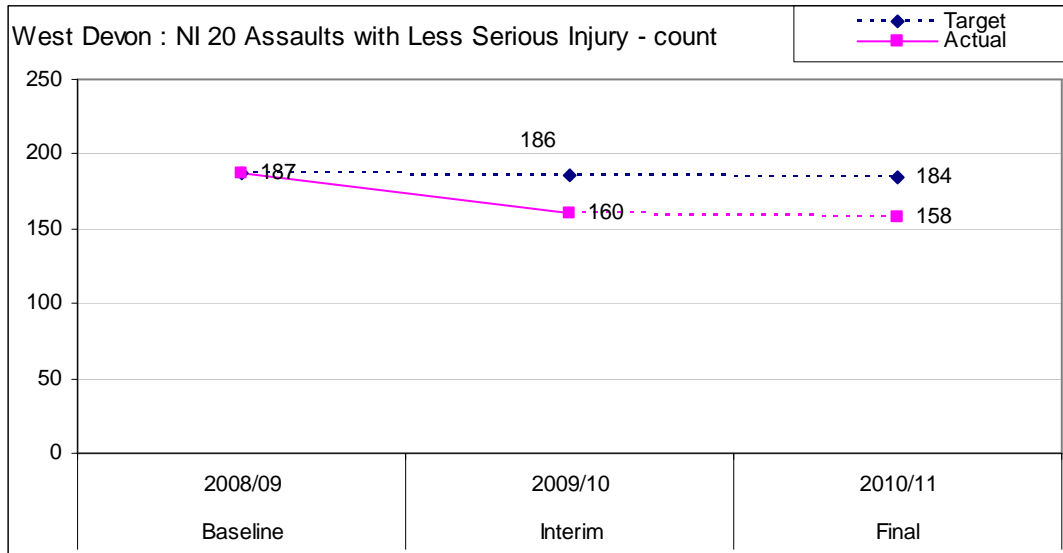
Is West Devon on course to meet its target?

The table below confirms that West Devon is on course to achieve its final target.

NI 20		Baseline 2008/09	Interim 2009/10	Final 2010/11
Target	Count	187	187	184
	Rate/1000	3.59	3.54	3.48
Actual	Count		160	40 (158)
	Rate/ 1000		3.02	0.76 (2.99)

- The number of offences seen to date in 2010/11 is 40 which leads to a prediction for the year of 158 which is well within the target of 184.
- The corresponding predicted rate for the year of 2.99 offences per 1000 people is also within the target of 3.48.





The graph below shows the cumulative figure and confirms the achievement of target with the actual figure to date being well within the target figures.

