

DCC**SERIOUS ACQUISITIVE CRIME****National Indicator 16****Year 2010/11 Q1 (April to June 2010)****TARGET**

NI 16 – a reduction in the 2007/08 base rate by 2% per year until 2010/11 (based on MYE 2006)

The following table shows the target appearing in the LAA (recalculated).

The rate gives the number of N16 (Serious Acquisitive Crime) offences per 1000 people

NI 16 Number of offences per 1000 people	Baseline 2007/08	Interim 1 2008/09	Interim 2 2009/10	Final 2010/11
Target agreed with HO	8.80	8.66	8.49	8.32
Actual (predicted)				
	MYE 06	MYE 07	MYE 08	MYE 08*

Calculation of targets

Note originally the targets were calculated on a using a base rate of 8.84 (6546 offences) provided by GOSW. This base rate has subsequently been updated by D&C Police to 8.80 offences/ 1000 people – the target have NOT been recalculated (agreed by GOSW).

The target rates in this report have been calculated using the Mid Year Estimate (MYE) 2006 and these will remain static.

As more up to date MYEs are received the number of offences needed to achieve the rates will be adjusted in order to maintain the baseline target rates.

*** adjusted using the MYE 2008 – (Mid year Estimates of population)**

<http://www.devon.gov.uk/peoplepeestimates>

right click and open the above link to access the population estimates from 1995 to 2008

CONTENTS

TARGETS

1. Is DCC on course to meets its NI 16 target?
2. Are the districts on course to meet their NI 16 targets?

OTHER

3. Serious Acquisitive Crime (NI16) by year
4. NI 16 by quarter
5. Monthly (peaks) NI 16
6. Serious Acquisitive Crime (NI 16) by peak time

APPENDIX

7. Individual districts and NI 16

Offenders/victim profiles see separate report due September 2010

TARGETS

1. Is DCC on course to meet its NI 16 target?

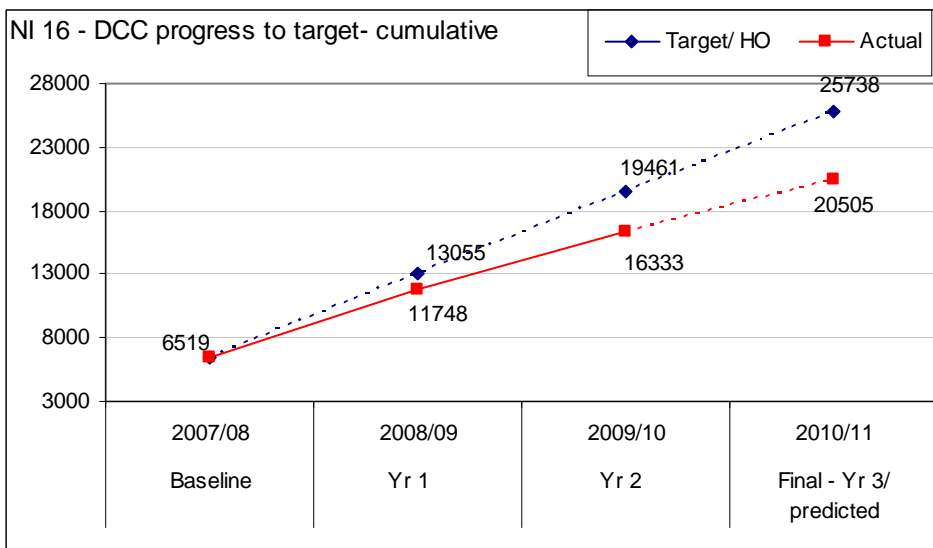
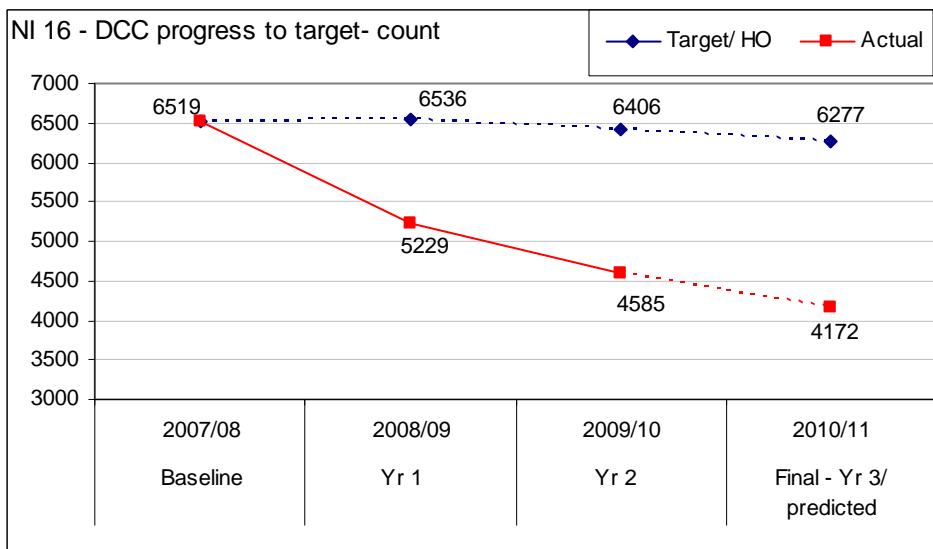
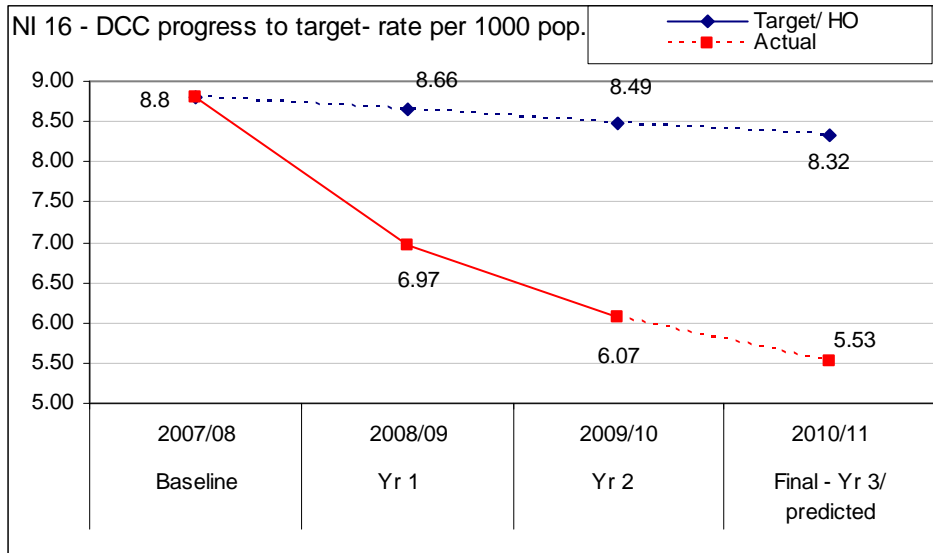
The table below confirms that DCC is on course to achieve both its interim and final targets. This includes both the LAA and recalculated targets.

NI 16		Baseline 2007/08	Yr 1 2008/09	Yr 2 2009/10	Target 2010/11
Target	Count	8.80 rate 6519 count	6536	6406	6277
	Rate/ 1000		8.66	8.49	8.32
Actual	Count		5229	4585	1129 (4172)
	Rate/ 1000		6.97	6.07	1.50 (5.53)

The first two graphs show simply the results in each year. Potentially the target can be achieved in Year 3 despite fails in the previous years. These charts show each year independently.

The third graph shows cumulative results. Each year/ quarter impacts on the next and fails/ passes in previous years/quarters can negate achievement in latter years or vice versa.

- DCC is on course to achieve the final target. The rate in 2010/11 is predicted to be 5.53 (4172 offences) which is well within the target of 8.32.
- The actual number of offences seen to date (Q1) is 1129 which leads to a current rate of 1.50.
- The cumulative graph also highlights the consistent achievement of target.



2. Are the districts on course to meet their targets?

The latest 2007/08 district baseline counts provided by the Police add up to a figure of 6519 upon which the base rate of 8.8 is calculated for DCC. As previously mentioned the DCC targets were based on a figure of 8.84 and 6546 offences which cannot be disaggregated to district so the target rates for the districts when combined will not result in the DCC target rates; they are however a good guide as to the progress that the districts are making against target.

District Data

The following table summarises the baselines, targets and actual data to date for each of the districts.

- All districts are on course to meet their final target.

	2007/08		2008/09		2009/10			
	Baseline		Target	Actual	Target		Actual	
	Count	rate	Rate	Rate	Count	Rate	Count	Rate
East Devon	989	7.54	7.39	6.24	961	7.25	717	5.40
Exeter	1753	14.66	14.36	12.55	1738	14.08	1231	9.97
Mid Devon	765	10.27	10.06	6.32	756	9.86	486	6.34
North Devon	897	9.80	9.61	7.06	869	9.42	587	6.36
South Hams	495	5.95	5.83	5.09	477	5.71	357	4.28
Teignbridge	838	6.68	6.54	5.79	818	6.41	711	5.57
Torridge	451	7.02	6.88	5.20	443	6.75	253	3.86
West Devon	331	6.46	6.34	4.63	328	6.21	243	4.59
DCC	6519	8.80	8.66*	6.97	6379	8.49*	4585	6.07
	MYE 06		MYE 07		MYE 2008			

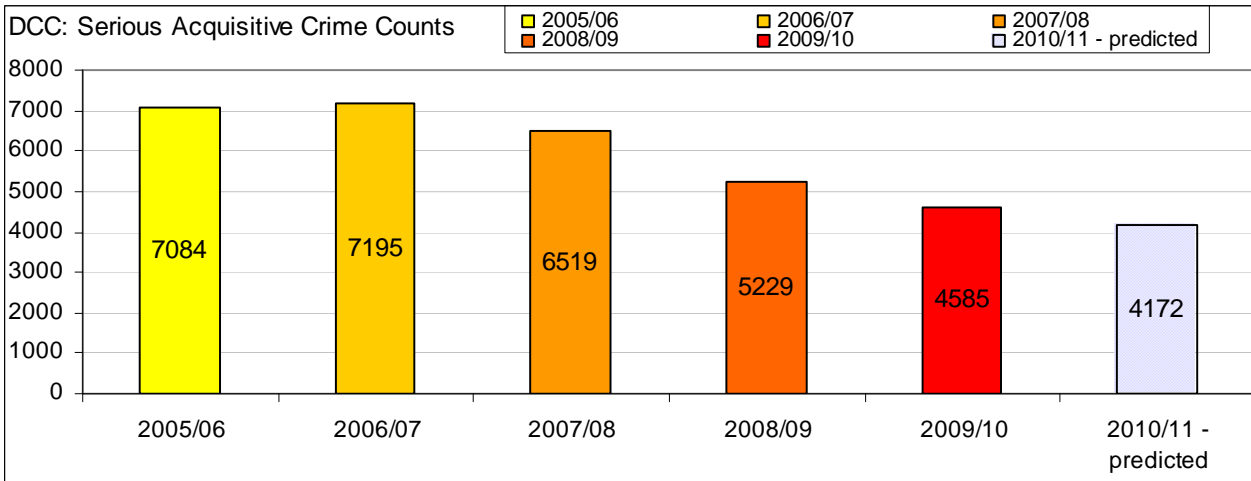
	2010/11						
	Target		Quarter 1 to date		Prediction for year		
	Count	Rate	Count	Rate	Count	Rate	Result
East Devon	942	7.10	172	1.30	659	4.96	On target
Exeter	1704	13.80	380	3.08	1392	11.27	On target
Mid Devon	741	9.66	90	1.17	301	3.93	On target
North Devon	852	9.23	144	1.56	571	6.18	On target
South Hams	468	5.60	89	1.07	328	3.93	On target
Teignbridge	802	6.28	150	1.18	537	4.21	On target
Torridge	434	6.61	55	0.84	229	3.49	On target
West Devon	322	6.08	49	0.93	167	3.16	On target
DCC	6252	8.32*	1129	1.50	4172	5.53	On target
	MYE 08						

**the DCC target rates were originally calculated on a baseline rate of 8.84 not the 8.80 as above. The baseline was changed to reflect the 8.80 but the targets remain unchanged. The district target rates agree with the 8.80 rate not 8.84 as per DCC*

OTHER

3. Serious Acquisitive Crime (NI 16) by year

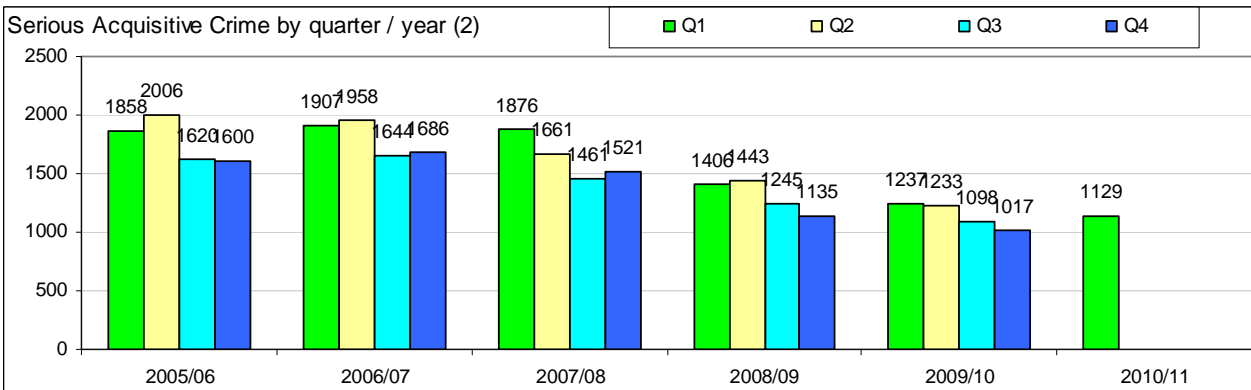
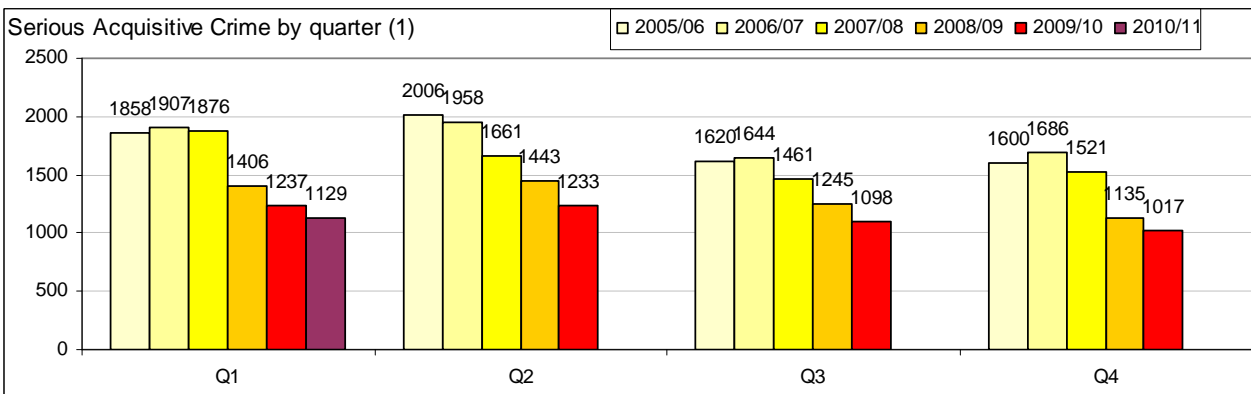
The graph below shows the number of 'serious acquisitive' crimes falling to a predicted all time low in the current year. Since 2006/07 counts have fallen by a minimum of 9% per year with a maximum fall of 20% between 2007/08 and 2008/09.



4. Serious Acquisitive Crime (NI 16) by quarter

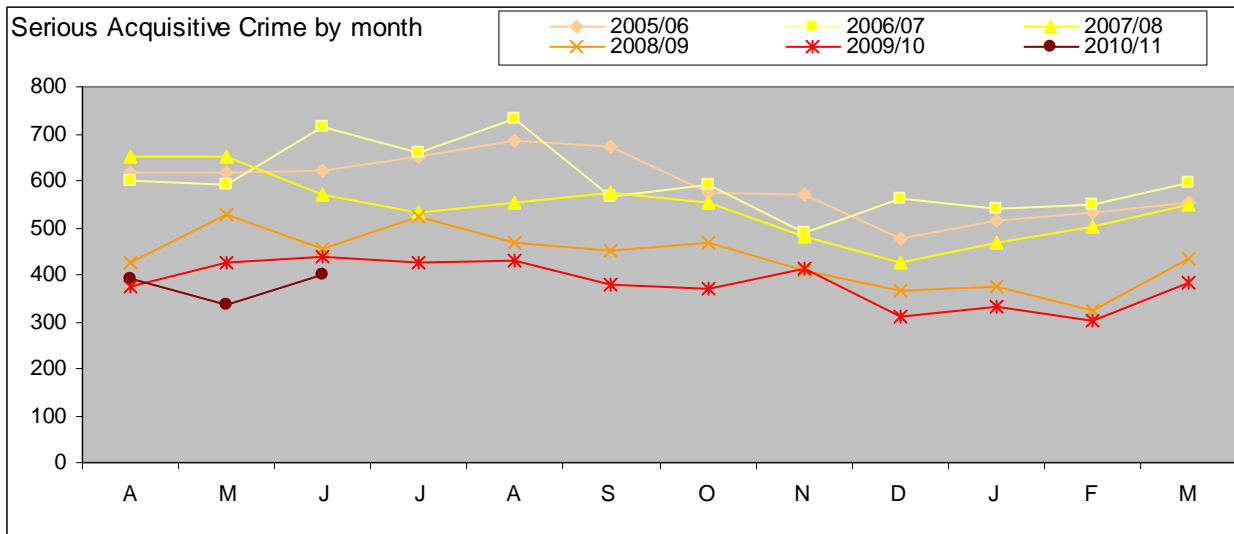
The graphs below show:

- Quarters 1 and 2 see the most offences (in three out of five times Q1)
- Quarters 3 and 4 see the fewest offences (in three out of five times Q4)
- The fall in quarterly figures is further illustrated in the second map.



5. Serious Acquisitive Crime (NI 16) by monthly seasonal

The graph below plots the monthly data to give an idea of the peak months. In very general terms the peaks and troughs are fairly consistent between years, comparatively high between May and August and then fall to comparatively lower levels for the remaining months particularly November to February.



6. Serious Acquisitive Crime (NI 16) by peak time

The software available to calculate the peak time for this type offence is unable to deal with large volumes of offences so that peak time for DCC cannot be easily calculated. If however, analysis at a lower geography e.g. district or Devon Town is requested charts can be compiled.

7. Serious Acquisitive Crime (NI 16) by weather conditions

Various weather conditions including maximum temperature, minimum temperature and rainfall have been plotted on a monthly basis against incidents of Serious Acquisitive Crime but no relationship found.

APPENDIX

8. Individual districts and NI 16

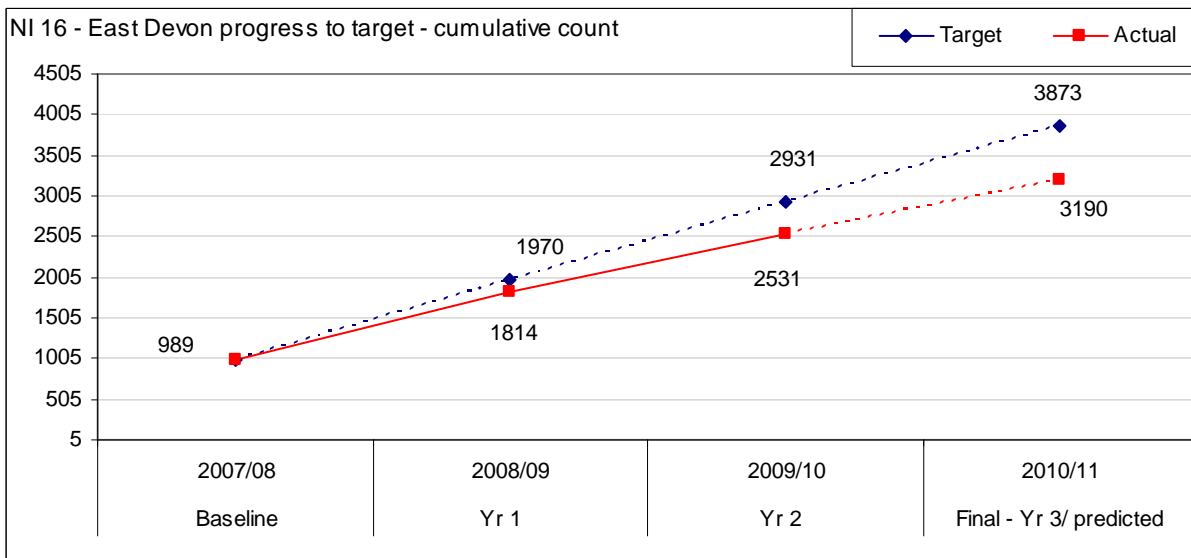
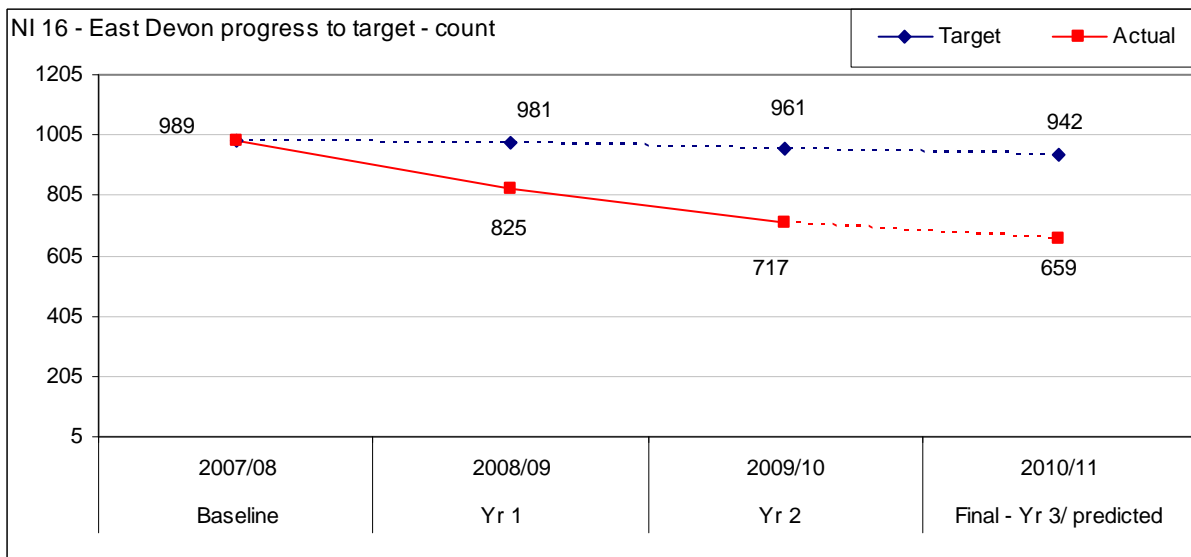
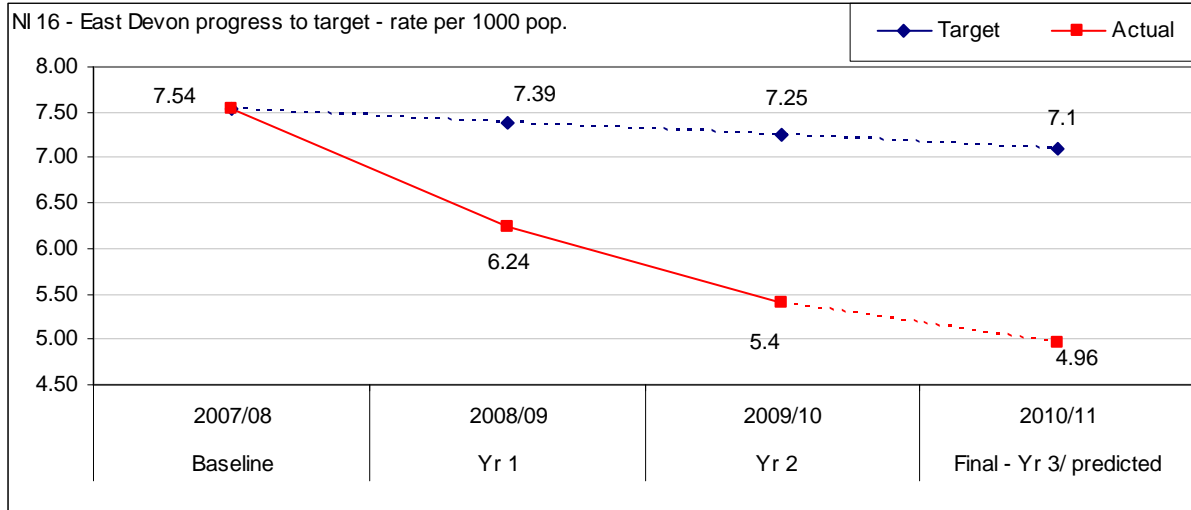
The following uses targets based upon the DCC figure of 6519 disaggregated to districts level.

Is East Devon on course to meet its target?

The table below confirms that East Devon is on course to achieve both its interim and final targets.

NI 16		Baseline 2007/08	Yr 1 2008/09	Yr 2 2009/10	Target 2010/11
Target	Count	989 count 7.54 rate	981	961	942
	Rate/ 1000		7.39	7.25	7.10
Actual	Count		825	717	172 (659)
	Rate/ 1000		6.24	5.40	1.3 (4.96)

- East Devon is on course to achieve the target. The rate to date in 2010/11 Q1 is 1.3 which leads to a predicted rate of 4.96 which is well within the target of 7.10.
- The number of offences seen to date in 2010/11 Q1 is 172 which leads to a predicted number for the year of 659 offences.
- The cumulative graph also highlights the consistent achievement of target.

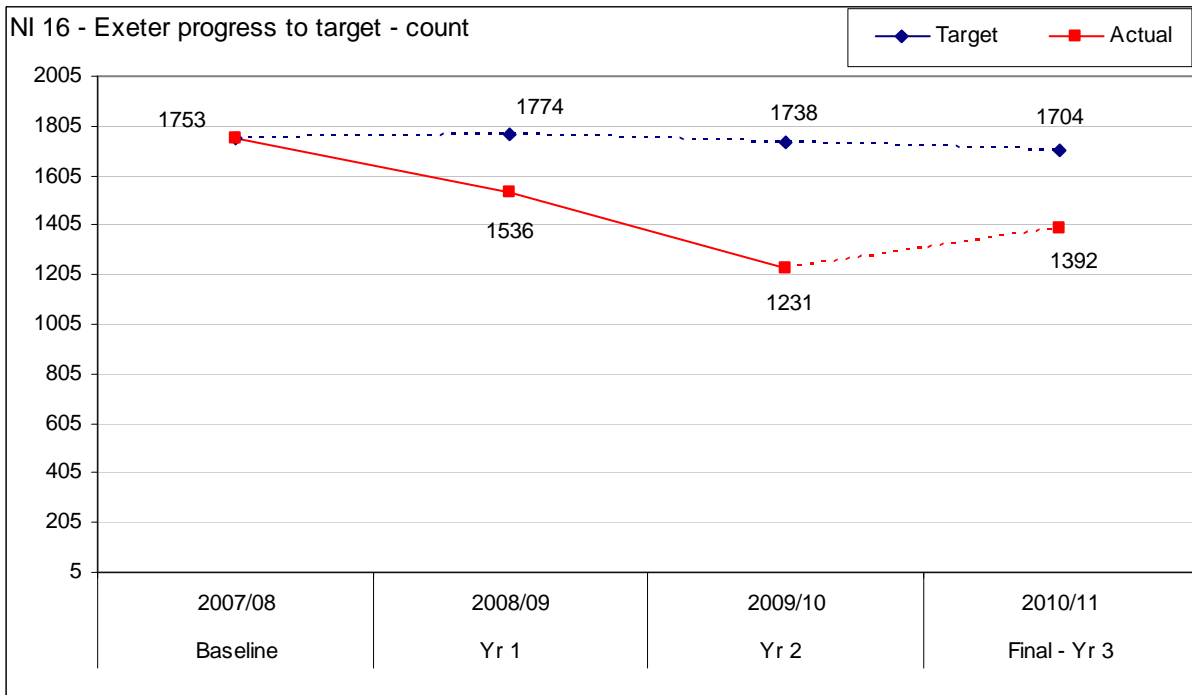
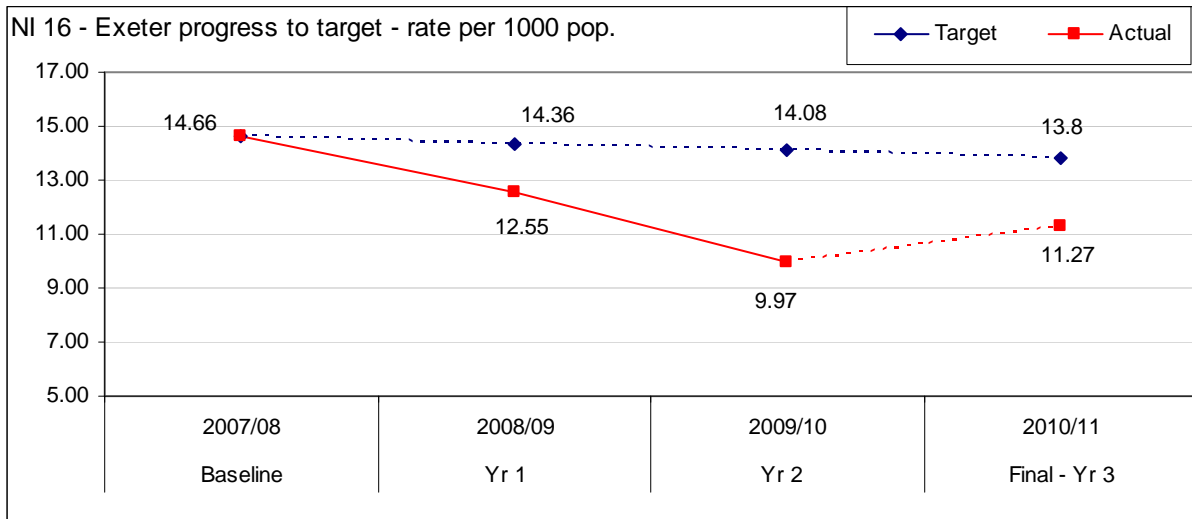


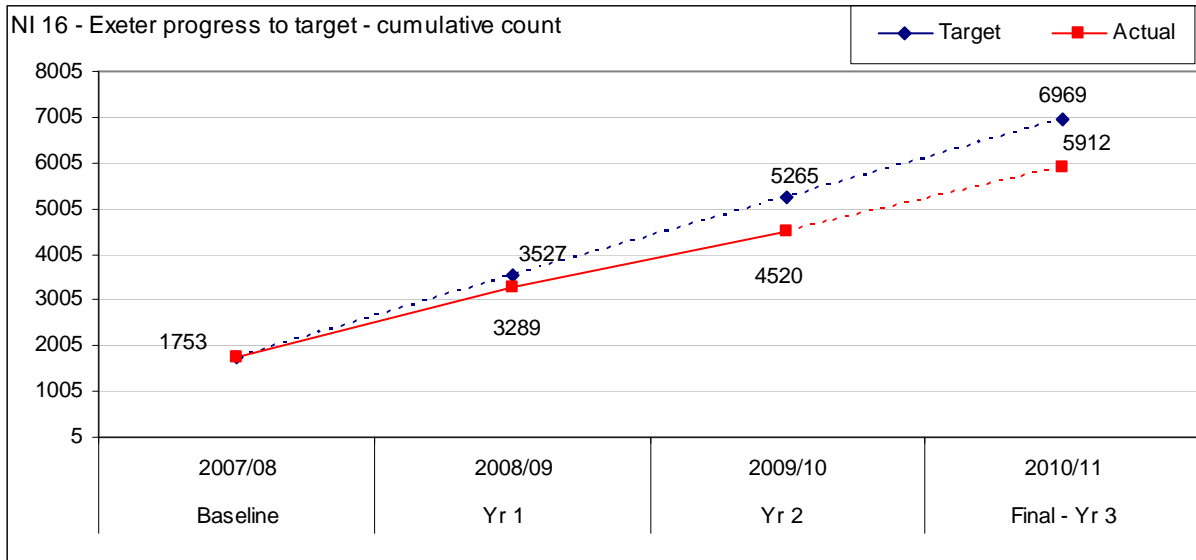
Is Exeter on course to meet its target?

The table below confirms that Exeter is on course to achieve both its interim and final targets.

NI 16		Baseline 2007/08	Yr 1 2008/09	Yr 2 2009/10	Target 2010/11
Target	Count	1753 count 14.66 rate	1774	1738	1704
	Rate/ 1000		14.36	14.08	13.80
Actual	Count		1536	1231	380 (1392)
	Rate/ 1000		12.55	9.97	3.08 (11.27)

- Exeter is on course to achieve the target. The rate to date in 2010/11 Q1 is 3.08 which leads to a predicted figure of 11.27 for the year which is well within the target of 13.80.
- The number of offences seen to date is 380 which leads to a predicted year end figure of 1392 offences.
- The cumulative graph also highlights the consistent achievement of target.



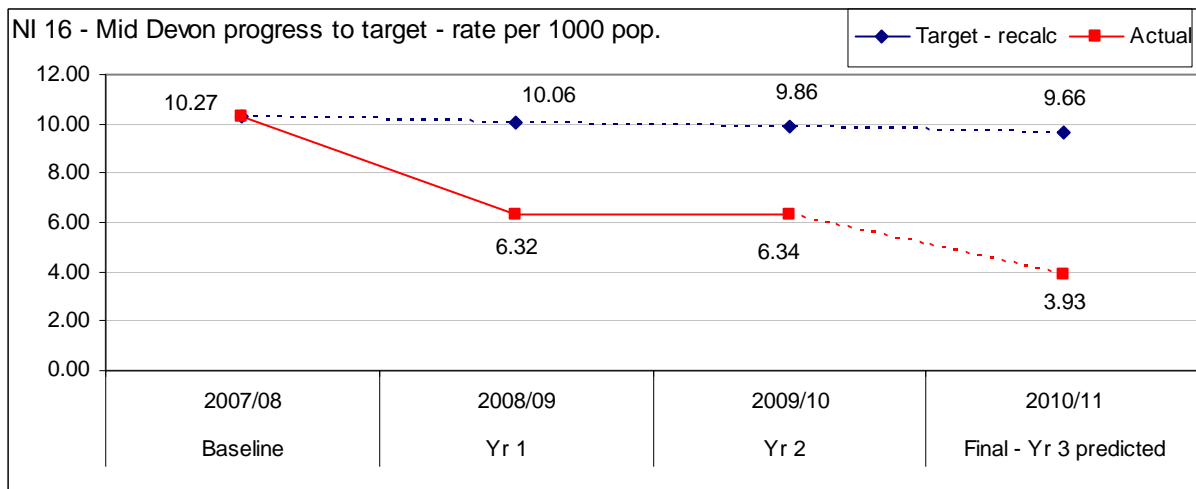


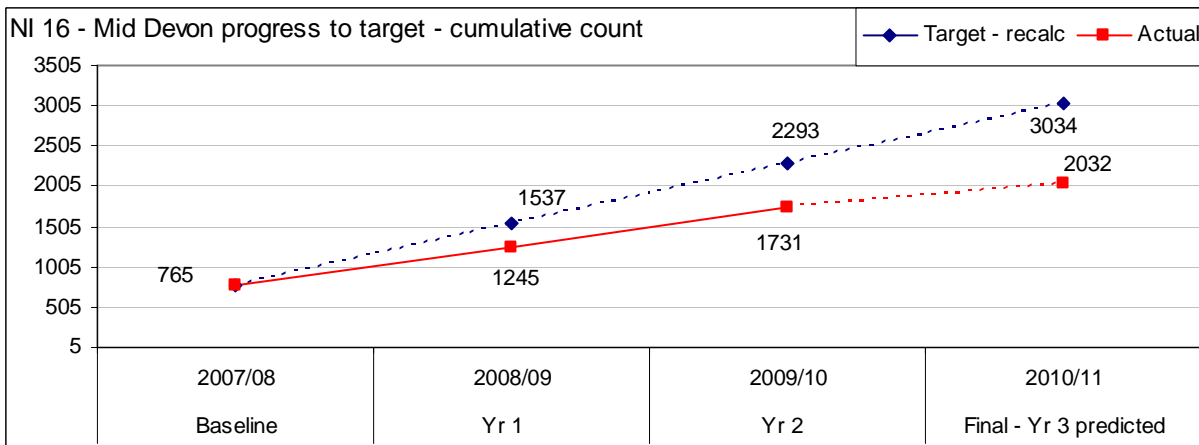
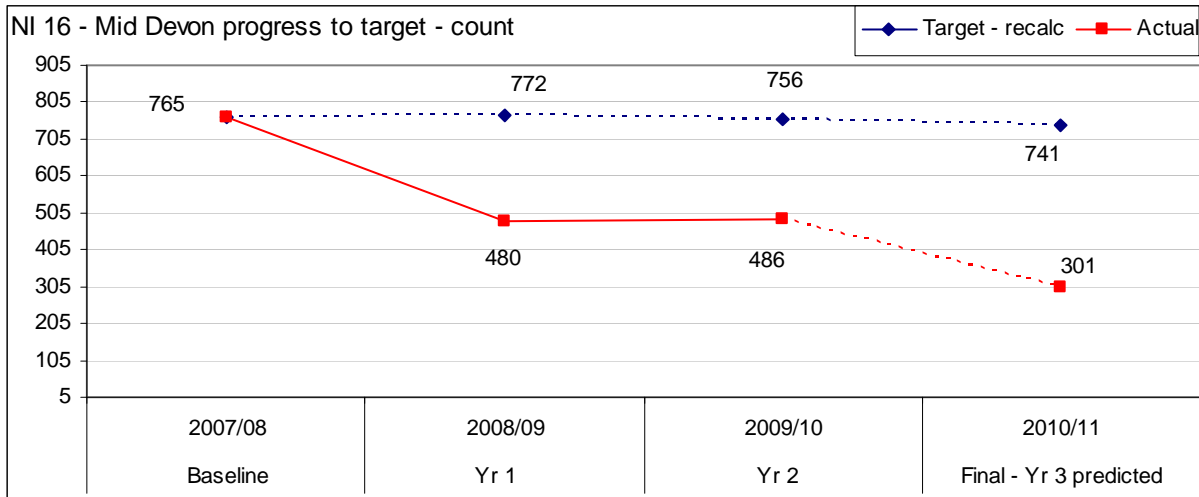
Is Mid Devon on course to meet its target?

The table below confirms that Mid Devon is on course to achieve both its interim and final targets.

NI 16		Baseline 2007/08	Yr 1 2008/09	Yr 2 2009/10	Target 2010/11
Target	Count	765 count 10.27 rate	772	756	741
	Rate/ 1000		10.06	9.86	9.66
Actual	Count		480	486	1.17 (3.93)
	Rate/ 1000		6.32	6.34	90 (301)

- Mid Devon is on course to achieve the target. The rate in 2010/11 Q1 to date is 1.17 offences per 1000 population which leads to a predicted rate of 3.93 for the year which is well within the target of 9.66 offences. If the predicted figure proves correct there will be a considerable fall from last year.
- The corresponding number of offences is 90 which leads to a predicted figure of 301 for the year.
- The cumulative graph also highlights the consistent achievement of target.



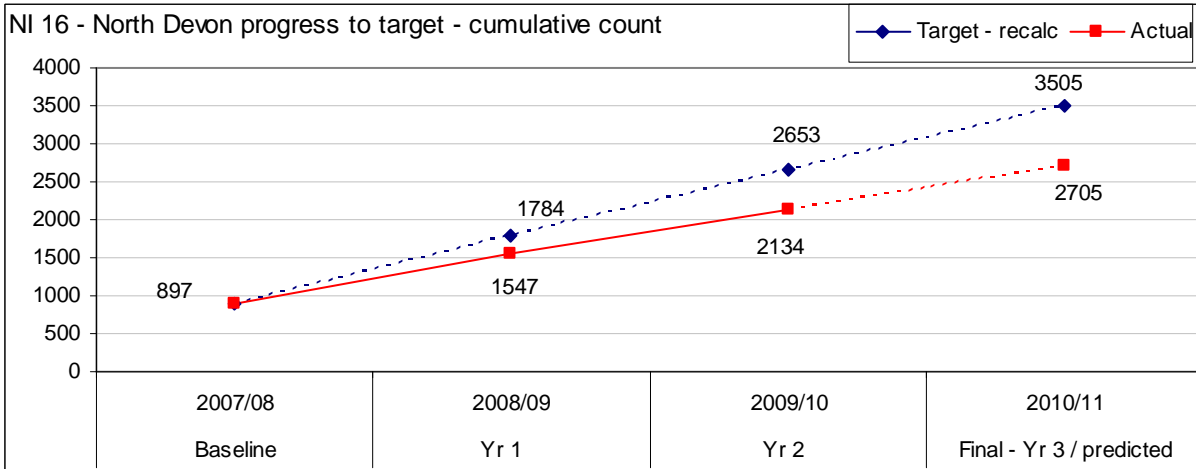
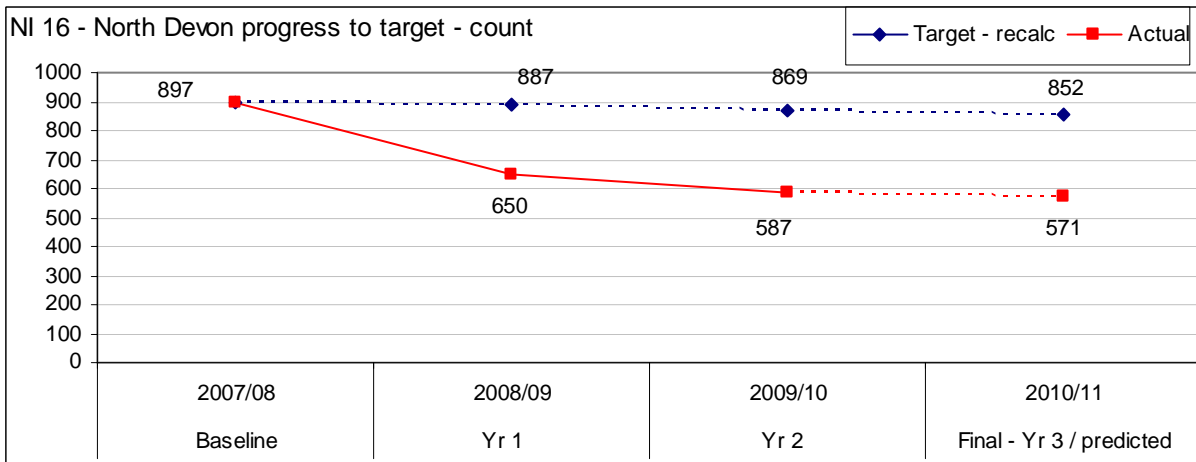
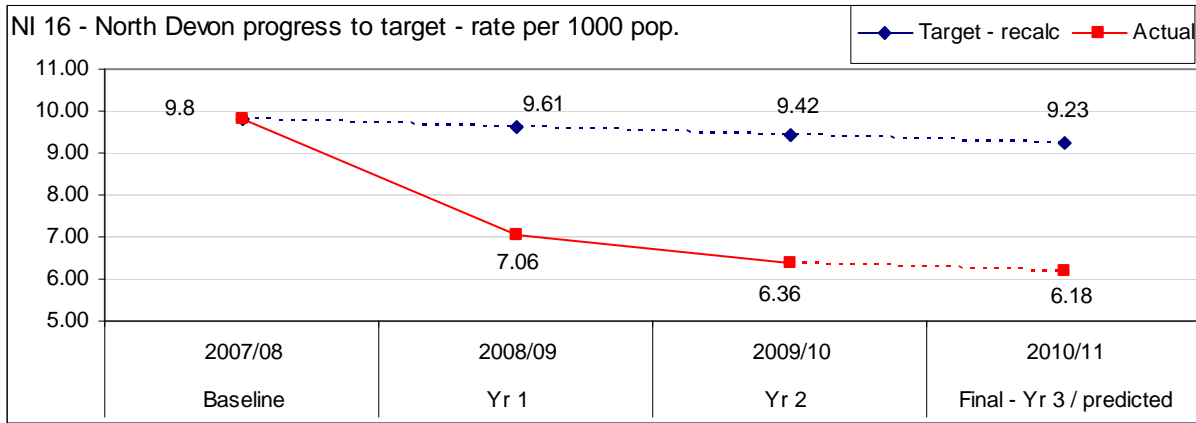


Is North Devon on course to meet its target?

The table below confirms that North Devon is on course to achieve both its interim and final targets.

NI 16		Baseline 2007/08	Yr 1 2008/09	Yr 2 2009/10	Target 2010/11
Target	Count	897 count 9.80 rate	887	869	852
	Rate/ 1000		9.61	9.42	9.23
Actual	Count		650	587	144 (571)
	Rate/ 1000		7.06	6.36	1.56 (6.18)

- North Devon is on course to achieve the target. The rate as at 2010/11 Q1 was 1.56 which leads to a year end prediction of 6.18 offences per 1000 population which is well within target.
- The corresponding count in 2010/11 to date is 144 which leads to a year end prediction of 571 offences.
- The cumulative graph also highlights the consistent achievement of target.

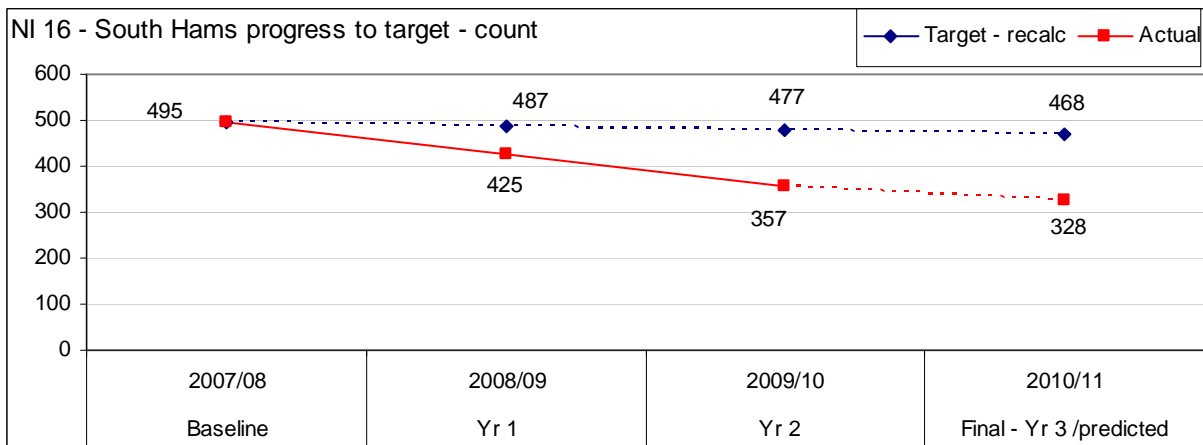
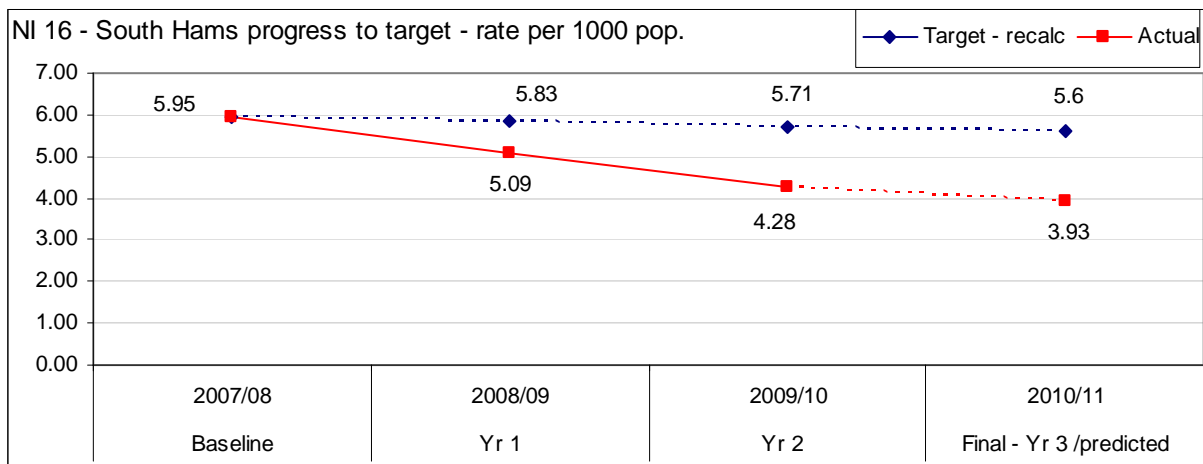


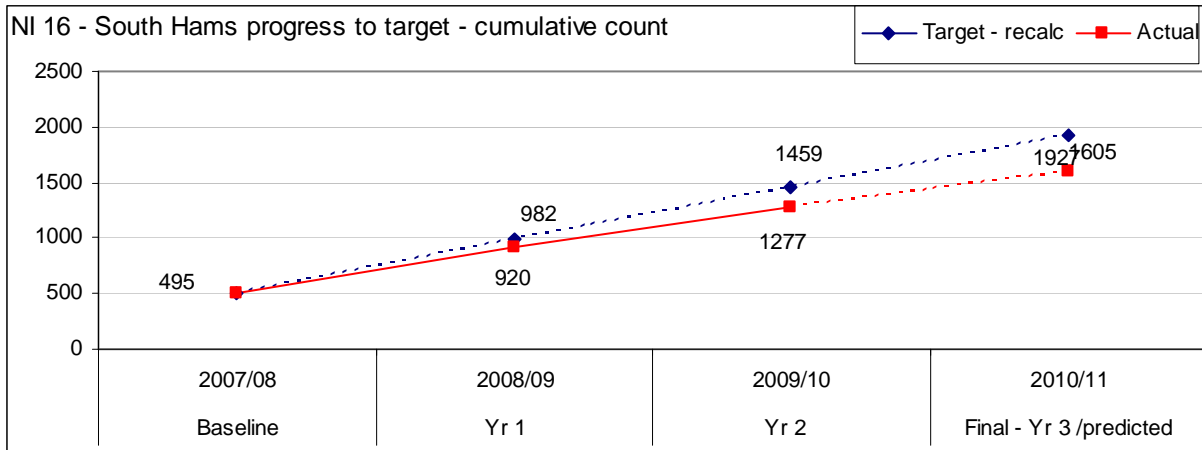
Is South Hams on course to meet its target?

The table below confirms that South Hams is on course to achieve its interim and final target.

NI 16		Baseline 2007/08	Yr 1 2008/09	Yr 2 2009/10	Target 2010/11
Target	Count	495 count 5.95 rate	487	477	468
	Rate/ 1000		5.83	5.71	5.60
Actual	Count		425	357	89 (328)
	Rate/ 1000		5.09	4.28	1.07(3.93)

- South Hams is on course to achieve the target. The rate to date in 2010/11 (Q1) is 1.07 which leads to a predicted rate of 3.93 offences per 1000 which is well within target.
- The number of offences seen in 2010/11 to date is 89 which leads to a predicted year end rate of 328 offences.
- The cumulative graph also highlights the consistent achievement of target.



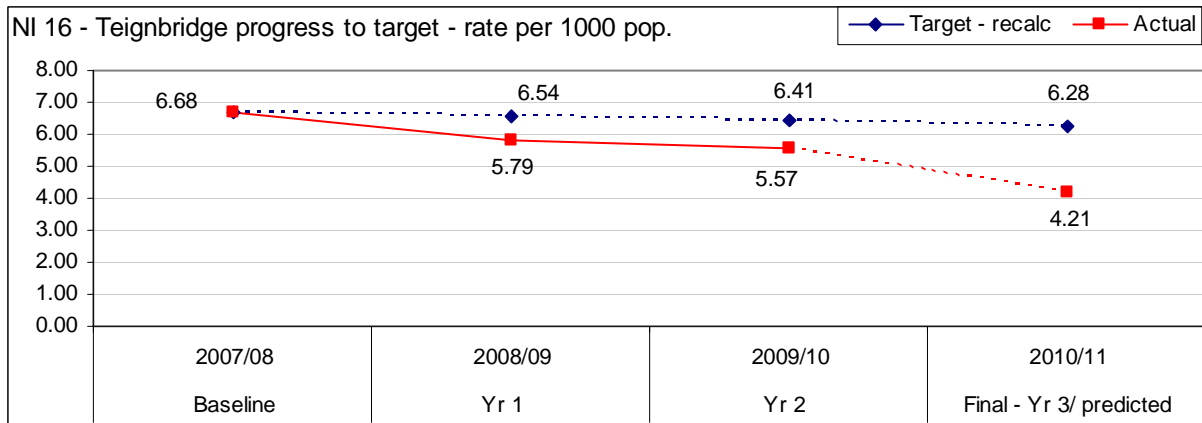


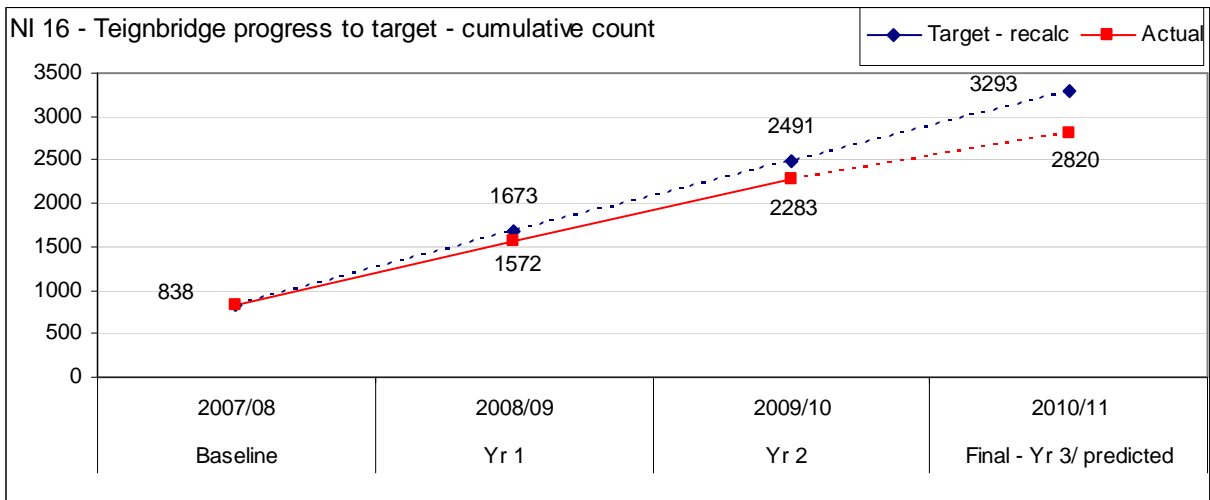
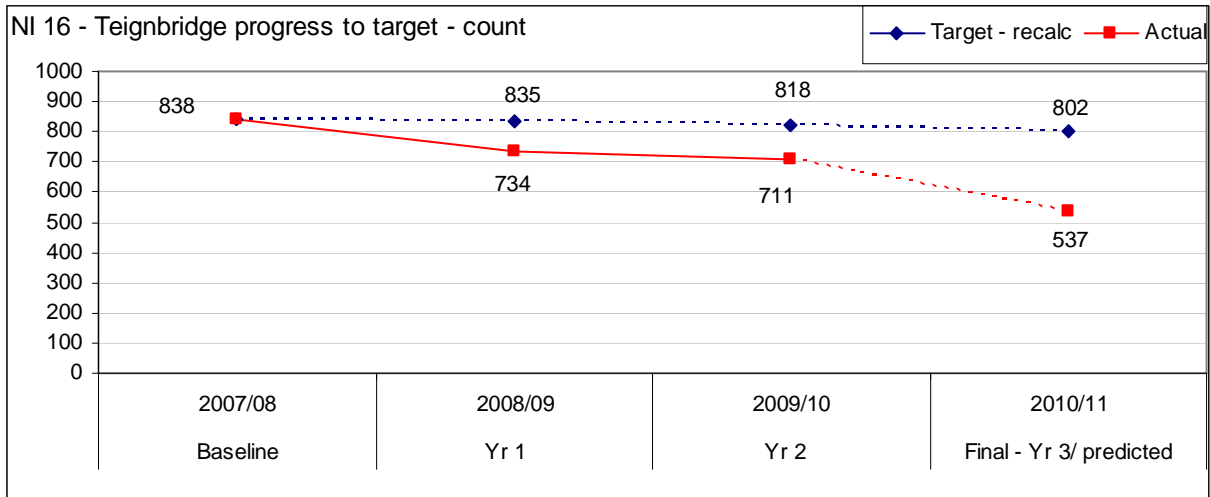
Is Teignbridge on course to meet its target?

The table below confirms that Teignbridge is on course to achieve its interim target.

NI 16		Baseline 2007/08	Yr 1 2008/09	Yr 2 2009/10	Target 2010/11
Target	Count	838 count 6.68 rate	835	818	802
	Rate/ 1000		6.54	6.41	6.28
Actual	Count		734	711	150 (537)
	Rate/ 1000		5.79	5.57	1.18 (4.21)

- Teignbridge is on course to achieve the target. The rate to date in 2010/11 (Q1) is 1.18 offences per 1000 people which leads to a predicted year end rate of 4.21.
- The number of offences to date is 150 which leads to a predicted number for the year of 537 offences.
- The cumulative graph also highlights the consistent achievement of target.



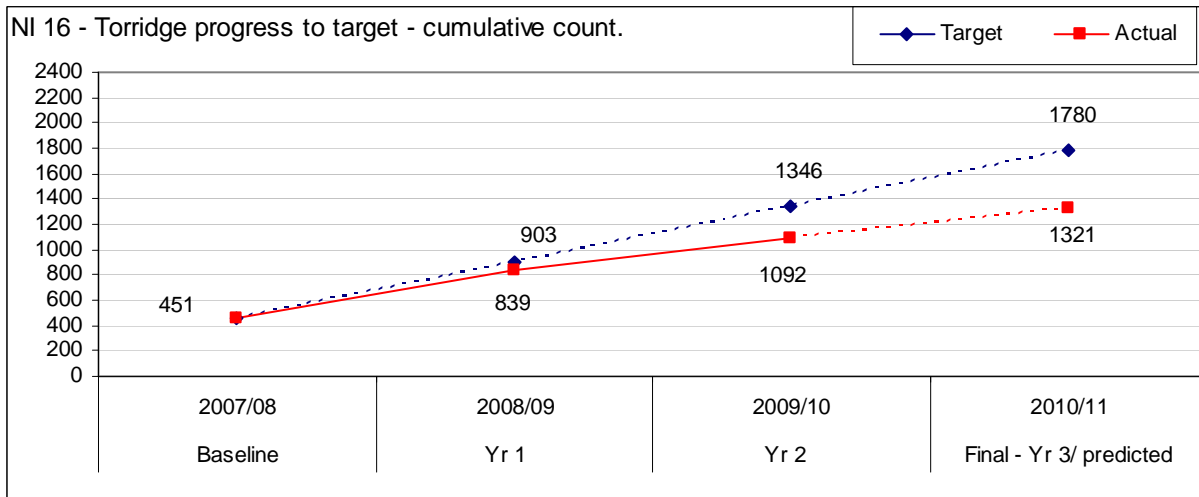
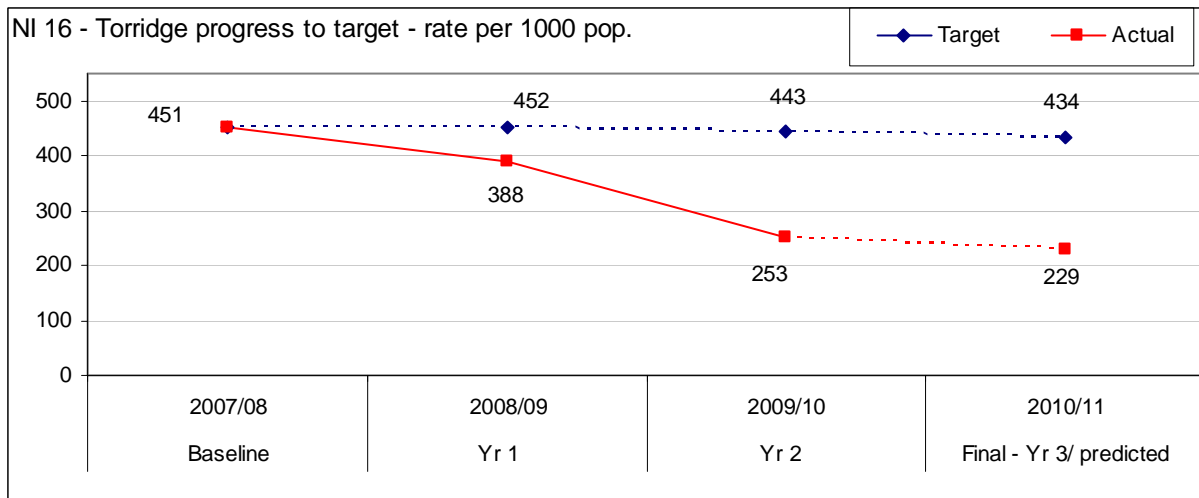
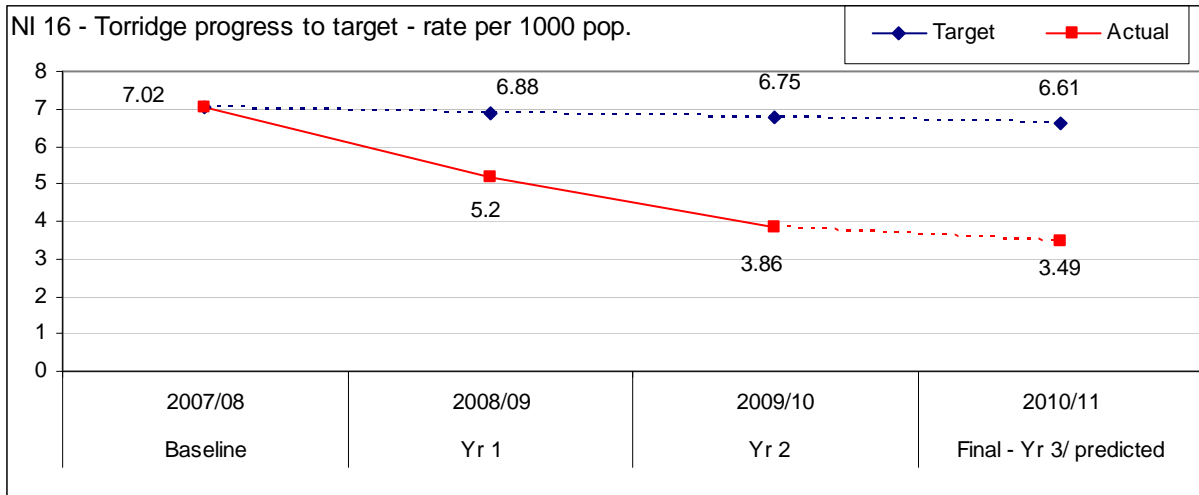


Is Torridge on course to meet its target?

The table below confirms that Torridge is on course to achieve its interim and final target.

NI 16		Baseline 2007/08	Yr 1 2008/09	Yr 2 2009/10	Target 2010/11
Target	Count	451 count 7.02 rate	452	443	434
	Rate/ 1000		6.88	6.75	6.61
Actual	Count		388	253	55 (229)
	Rate/ 1000		5.20	3.86	0.84 (3.49)

- Torridge is on course to achieve the target. The rate to date in 2010/11 Q1 is 0.84 which leads to a predicted year end rate of 3.49 which is well below the 6.61 target figure.
- The corresponding counts are to date 55 and predicted 229.
- The cumulative graph also highlights the consistent achievement of target.



Is West Devon on course to meet its target?

The table below confirms that West Devon is on course to achieve its final target.

NI 16		Baseline 2007/08	Yr 1 2008/09	Yr 2 2009/10	Target 2010/11
Target	Count	331 count 6.46 rate	335	328	322
	Rate/ 1000		6.34	6.21	6.08
Actual	Count		241	243	0.93 (3.16)
	Rate/ 1000		4.63	4.59	49 (167)

- West Devon is on course to achieve the target. The rate in 2010/11 Q1 is 0.93 which leads to a year prediction of 3.16 offences per thousand which is well within the target of 6.08 offences per 1000.
- The corresponding number of offences seen in 2010/11 is 49 which leads to prediction for the year of 167 offences and again is well within the final target.
- The cumulative graph also highlights the consistent achievement of target.

