

DCC

ASSAULT WITH LESS SERIOUS INJURY
Version 1

National Indicator 20

2010/11 Quarter 2 (July 2010 to Sept 2010)

TARGET

***NI 20 – a reduction in the 2008/09 base rate of 3% by 2010/11
(based on Mid Year Estimate 2008)***

The revised mid year estimates were released in May 2010 and as such all targets and current figures have been recalculated to reflect these changes.

DCC	NI 20	Baseline 2008/09	Interim 2009/10	Final 2010/11
OLD TARGET	Count	3710	3677	3599
	Rate/ 1000 population	4.95	4.88	4.80
REVISED TARGET	Count	3710	3670	3617
	Rate/ 1000 population	4.99	4.91	4.84
ACTUAL/ PREDICTION	Count	3710	3296	3243
	Rate/ 1000 population	4.99	4.41	4.34
Mid Year Estimate Used		MYE 2007	MYE 2008	MYE 2009
Achievement of Target			Yes	yes

****MYE – Mid Year Estimate***

The target rates in this report have been calculated using the Mid Year Estimate 2007 and these will remain static. The number of offences needed to achieve the target rates have been calculated with respect to the changing Mid Year Estimates.

CONTENTS

Targets

1. Is DCC on course to meets its NI 20 target?
2. Are the districts on course to meet their NI 20 targets?

Other

3. Assaults with less serious injury (NI20) by year
4. NI 20 by quarter
5. Monthly (peaks) NI 20
6. Assault with less serious injury (NI 20) by peak time * not updated
7. Assault with less serious injury (NI 20) by weather conditions *no relationship found

Appendix

- Individual districts and NI 20

TARGETS

1. Is DCC on course to meet its NI 20 target?

The table below confirms that DCC is on course to achieve both its interim and final targets.

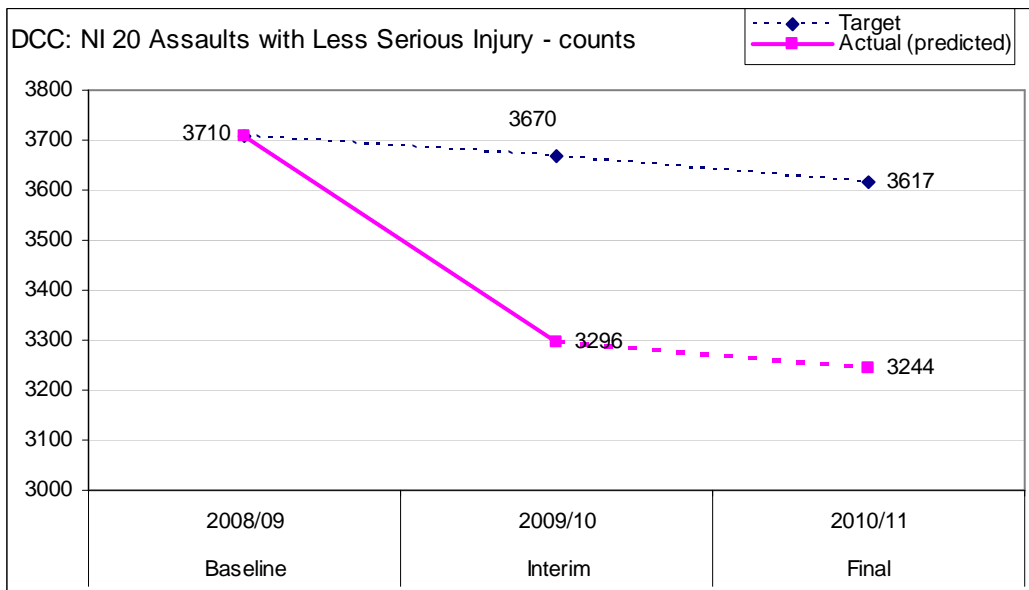
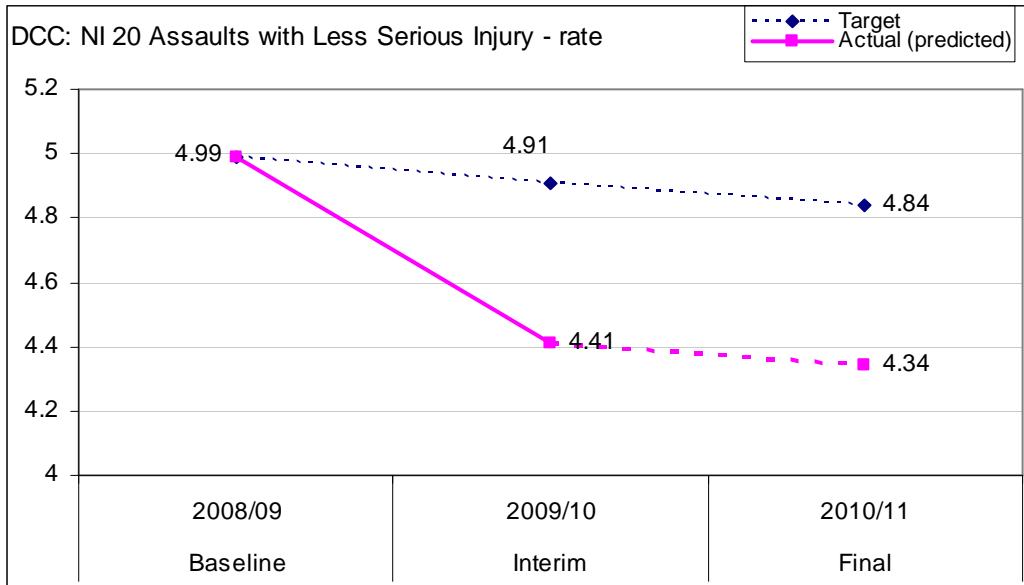
NI 20		Baseline 2008/09	Interim 2009/10	Final 2010/11
Old Target	Count	3710	3677	3621
	Rate/ 1000	4.95	4.87	4.80
Revised Target	Count	3710	3670	3617
	Rate/ 1000	4.99	4.91	4.84
Revised Mid year Estimate		743,600	746,800	747,400
Actual (predicted)	Count	3710	3296	1742 (3244)
	Rate/ 1000	4.99	4.41	2.33 (4.34)
Achievement of Target		-	Yes	yes

The first two graphs show simply the results in each year. Potentially the target can be achieved in Year 3 despite fails in the previous years. This chart shows each year independently.

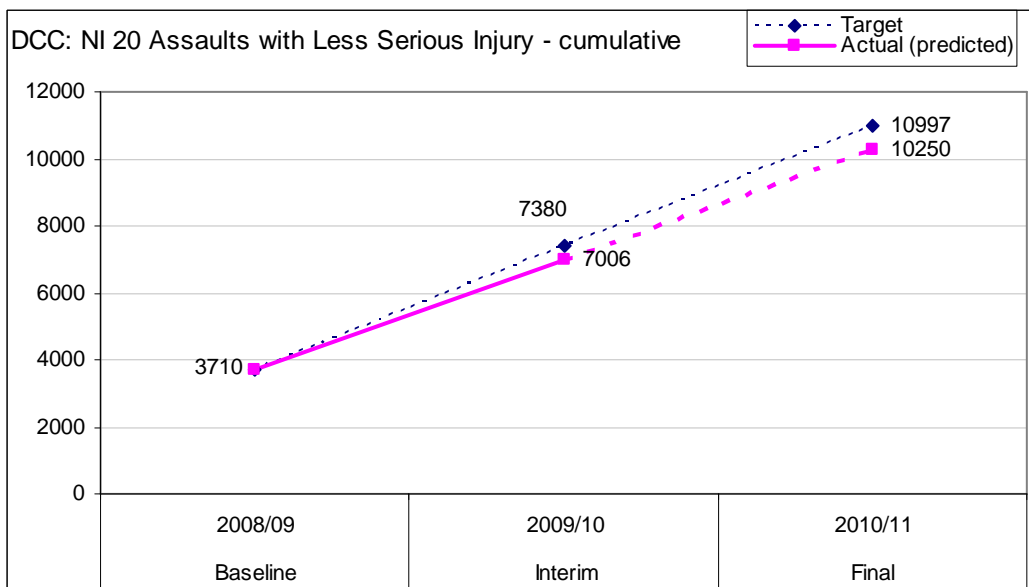
The second graph shows cumulative results. Each year/ quarter impacts on the next and fails in previous years/quarters can negate achievement in latter years or vice versa.

(The dotted line indicates the figure to the right is a prediction for the year)

- In both the interim year 2009/10 and 2010/11 Q2 the actual and predicted counts/ rates for the whole year are well within the target.



The graph below shows the cumulative figure and confirms the achievement of target with the actual figure to date being well within the target figures.



2. Are the districts on course to meet their targets?

District Data

The following table summarises the baselines, targets and actual data to date for each of the districts.

The predicted counts and rates are based on the average proportion of offences (out of the total) seen in the last five years to date e.g. In the last 5 years DCC saw an average of 27% of its total ASLI occurring by the end of the first quarter).

- All districts except for North Devon are on course to meet the final target.

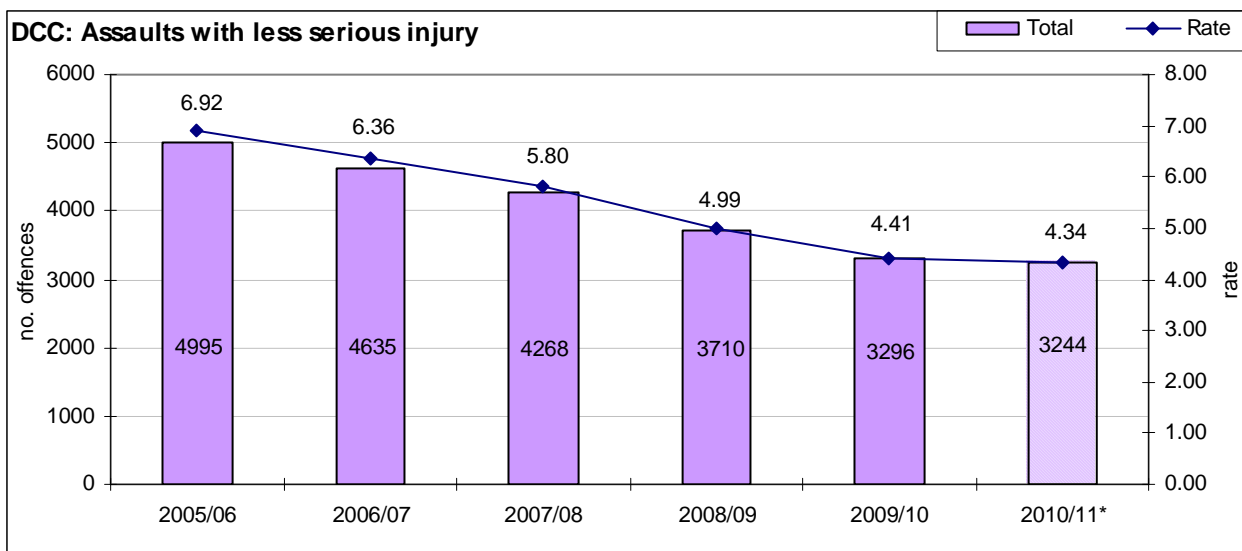
	Baseline 2008/09		Interim 2009/10			
	count	rate	actual		2009/10 target	
			count	rate	count	rate
East Devon	566	4.27	477	3.59	559	4.20
Exeter	905	7.63	819	6.63	891	7.52
Mid Devon	321	4.29	268	3.49	320	4.23
North Devon	600	6.56	551	5.97	592	6.47
South Hams	266	3.19	237	2.84	262	3.14
Teignbridge	557	4.42	526	4.12	551	4.35
Torridge	308	4.77	258	3.93	307	4.70
West Devon	187	3.60	160	3.02	187	3.54
DCC	3710	4.99	3296	4.41	3670	4.91
	Revised MYE 07		Revised MYE 08			

	Final 2010/11						
	Q2 to date		Year Prediction		Target		On course to achieve target
	count	rate	count	rate	count	rate	
East Devon	266	2.00	490	3.70	549	4.14	yes
Exeter	395	3.32	738	6.21	879	7.40	yes
Mid Devon	163	2.14	312	4.11	316	4.16	yes
North Devon	318	3.48	585	6.39	583	6.37	no
South Hams	102	1.22	183	2.19	258	3.09	yes
Teignbridge	271	2.14	510	4.02	544	4.29	yes
Torridge	132	2.02	250	3.83	302	4.62	yes
West Devon	95	1.80	178	3.37	184	3.49	yes
DCC	1742	2.33	3244	4.34	3617	4.84	yes
	Revised MYE 2009						

OTHER

3. Assault with less serious injury (NI 20) by year

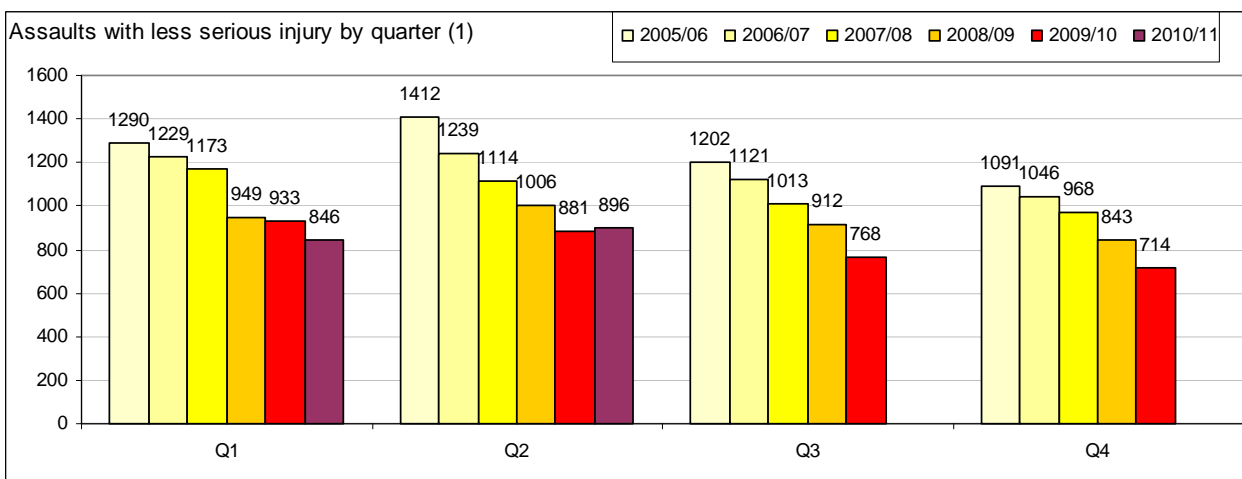
The graph below shows the falling number (and rate) of 'assaults with less serious injury' to a six year low predicted in 2010/11.

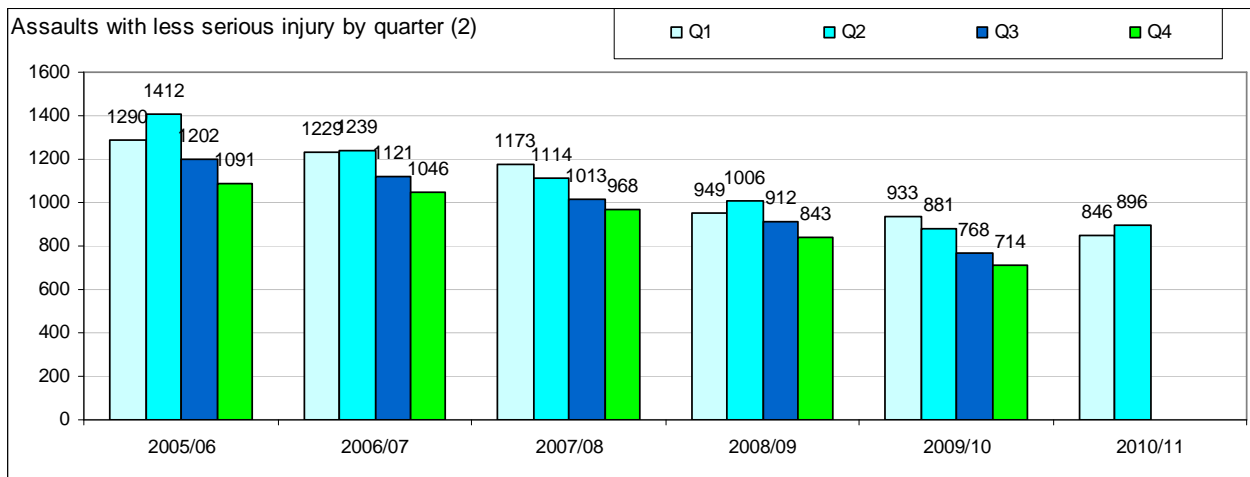


4. Assault with less serious injury (NI 20) by quarter

The graphs below show:

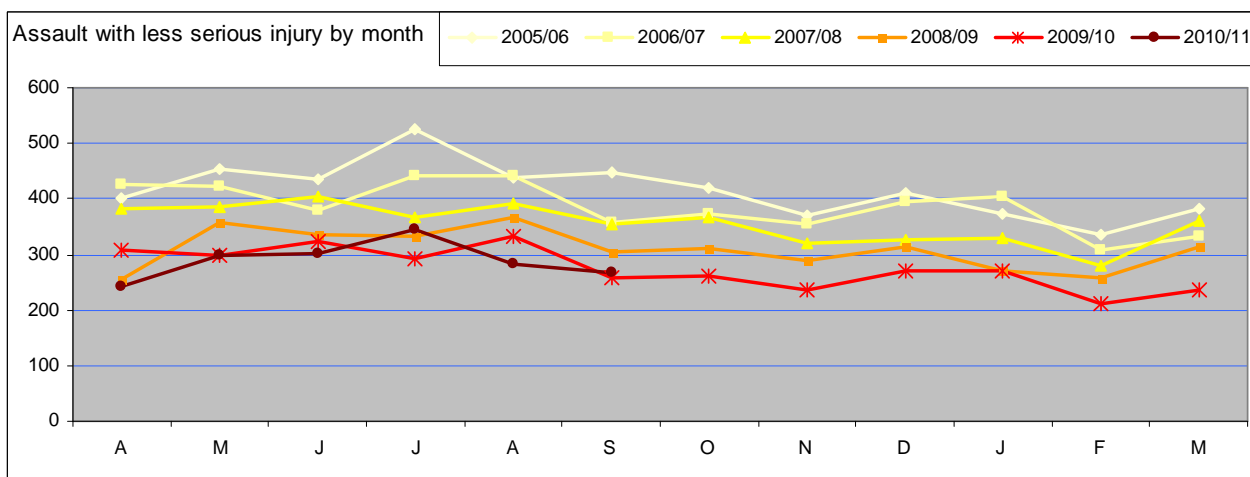
- In general the first two quarters of the year see the highest number of offences.
- Given the above it could be expected that the number of offences will not exceed 845 in each of the remaining two quarters in 2010/11.
- Quarter 4 i.e. January to March has seen the fewest offences.





5. Assault with less serious injury (NI 20) by monthly seasonal

The graph below plots the monthly data to give an idea of the peak months. In very general terms levels are fairly consistent, comparatively high between April and August and then fall to comparatively lower levels for the remaining months to a low in February.

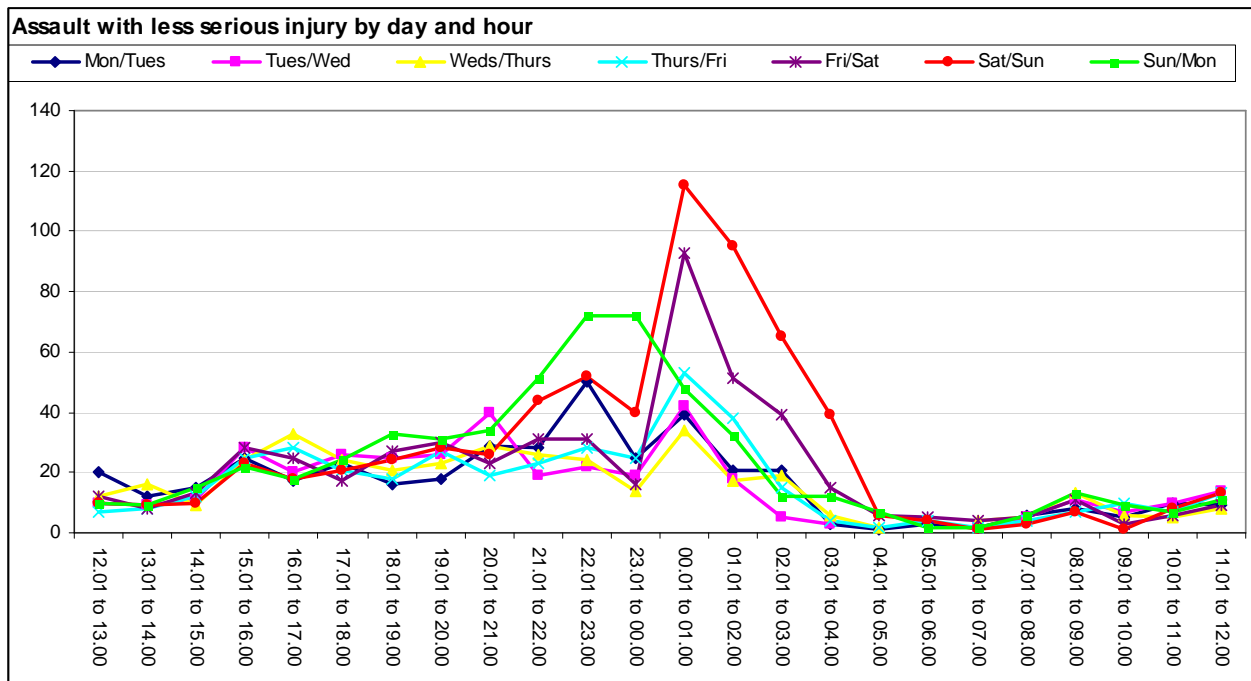


6. Assault with less serious injury (NI 20) by peak time – *this data has not been updated this quarter – it still reflects the year 2009/10 only*

The charts below illustrate the peak times of offending. The analysis is very basic in this report however if lower geographies e.g. district or Devon Town **are requested** the results are more accurate.

The analysis below simply uses start date and time whereas at lower geographies the duration of the offence can be taken into account.

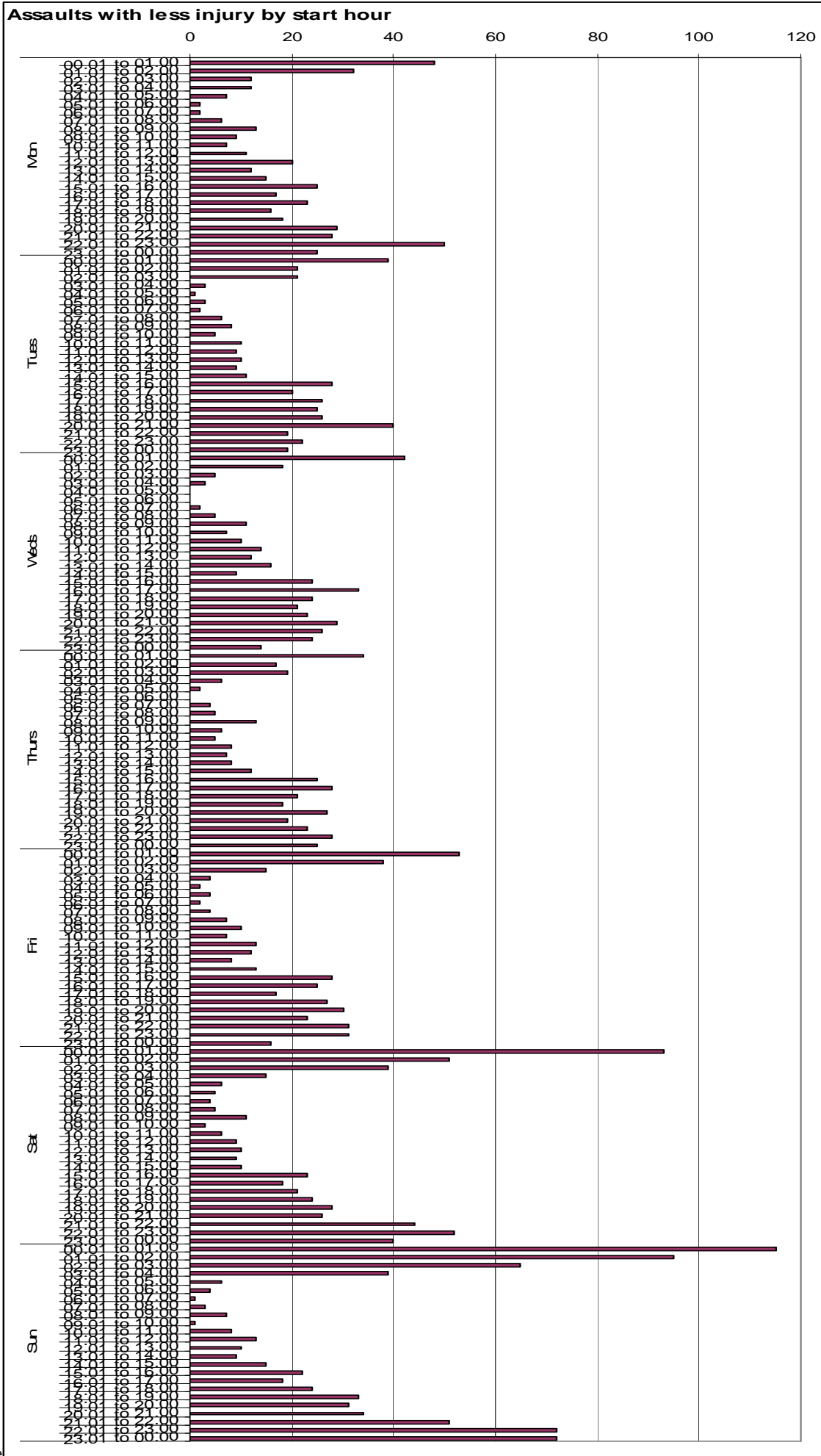
- Interestingly the time of offending peaks at between 00.01 and 01.00 on both Fri/ Sat night and Sat/Sun night though the latter offending period is longer.
- There are a notable number of offences on Sun/Mon however the offending period is two hours earlier than the previous two nights.
- Offending drops dramatically at 04.00 on all days.
- From 10 am onwards there is a slow rise to 12 mid day followed by a fall around 1pm to 3pm and then a rise into the evening with offending at similar levels on all days between 4pm and 8pm.



Cells contain the number of offences starting on the given day in the given hour. It does not take into account duration of the offence. The darker the colour coding the more offences seen.

	Mon/Tues	Tues/Wed	Weds/Thurs	Thurs/Fri	Fri/Sat	Sat/Sun	Sun/Mon	Grand Total
12.01 to 13.00	20	10	12	7	12	10	10	81
13.01 to 14.00	12	9	16	8	8	9	9	71
14.01 to 15.00	15	11	9	12	13	10	15	85
15.01 to 16.00	25	28	24	25	28	23	22	175
16.01 to 17.00	17	20	33	28	25	18	18	159
17.01 to 18.00	23	26	24	21	17	21	24	156
18.01 to 19.00	16	25	21	18	27	24	33	164
19.01 to 20.00	18	26	23	27	30	28	31	183
20.01 to 21.00	29	40	29	19	23	26	34	200
21.01 to 22.00	28	19	26	23	31	44	51	222
22.01 to 23.00	50	22	24	28	31	52	72	279
23.01 to 00.00	25	19	14	25	16	40	72	211
00.01 to 01.00	39	42	34	53	93	115	48	424
01.01 to 02.00	21	18	17	38	51	95	32	272
02.01 to 03.00	21	5	19	15	39	65	12	176
03.01 to 04.00	3	3	6	4	15	39	12	82
04.01 to 05.00	1		2	2	6	6	7	24
05.01 to 06.00	3			4	5	4	2	18
06.01 to 07.00	2	2	4	2	4	1	2	17
07.01 to 08.00	6	5	5	4	5	3	6	34
08.01 to 09.00	8	11	13	7	11	7	13	70
09.01 to 10.00	5	7	6	10	3	1	9	41
10.01 to 11.00	10	10	5	7	6	8	7	53
11.01 to 12.00	9	14	8	13	9	13	11	77

Note the graph overleaf is only intended to give a vague representation of when there are more offences. The quality of the graph is unfortunately not very good.



7. Assault with less serious injury (NI 20) by weather conditions

Various weather conditions including maximum temperature, minimum temperature and rainfall have been plotted on a monthly basis against incidents of Assault with less serious injury but no relationship found.

APPENDIX

- **Individual districts and NI 20**

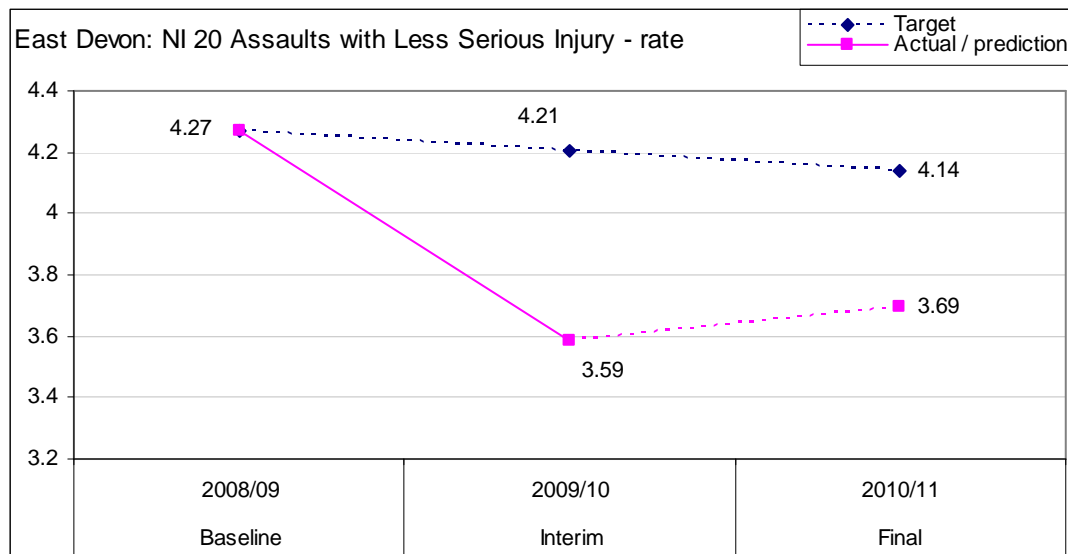
** note all figures in brackets or linked by dotted lines (in graphs) show predicted yearly figures*

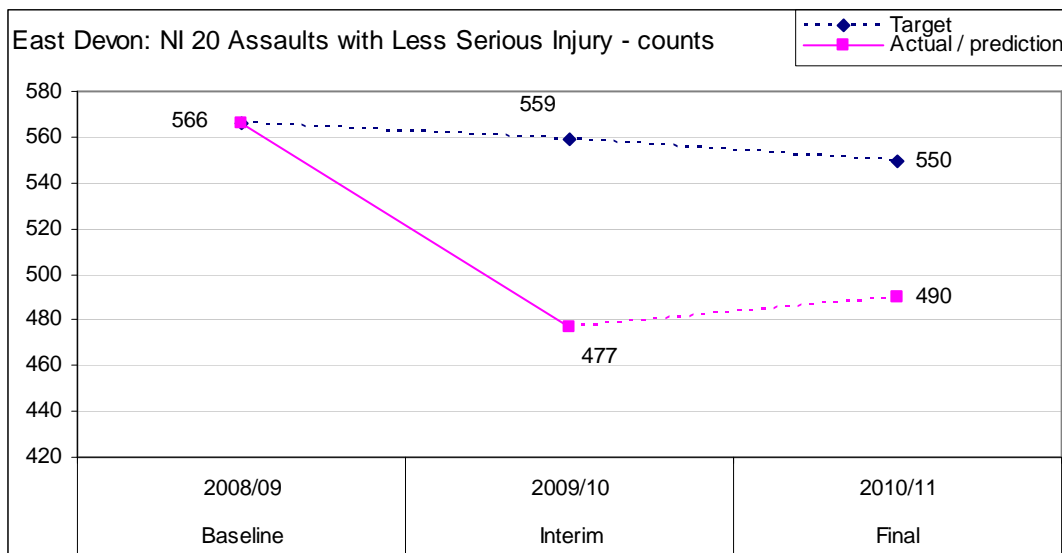
Is East Devon on course to meet its target?

The table below confirms that East Devon is on course to achieve its final target.

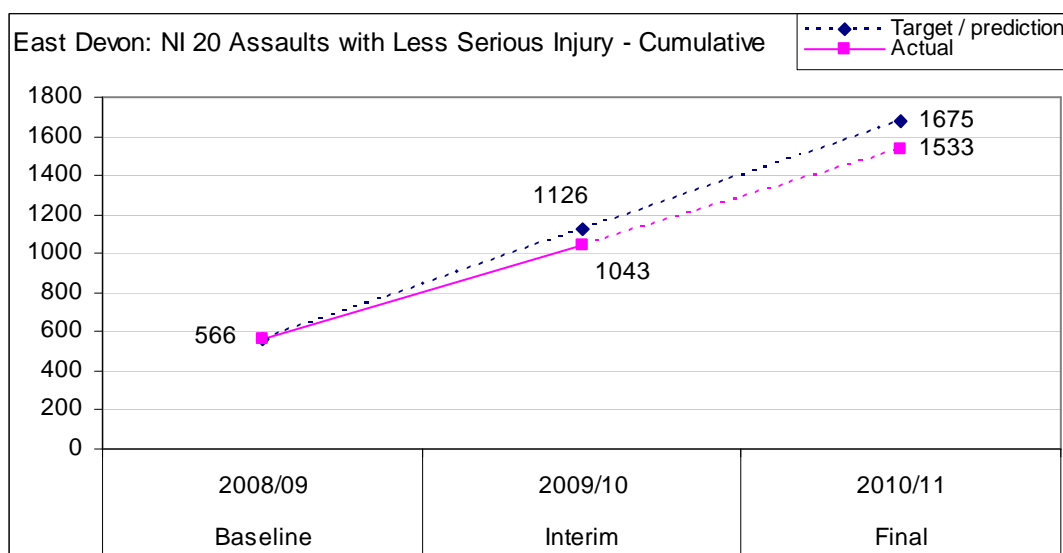
NI 20		Baseline 2008/09	Interim 2009/10	Final 2010/11
Old Target	Count	566	559	550
	Rate/ 1000	4.28	4.21	4.15
Revised Target	Count	566	559	550
	Rate/ 1000	4.27	4.21	4.14
Revised Mid year estimates		132,600 (2007)	133,000 (2008)	132,700 (2009)
Actual /(predicted)	Count	566	477	266 (490)
	Rate/ 1000	4.27	3.59	2.00 (3.69)
Target Achieved		-	Yes	yes

- The predicted rate for 2010/11 is 3.69 offences per 1000 people which is within the target of 4.14.
- The number of offences seen to date in 2010/11 is 266 which gives a predicted figure of 490 offences which is well within the final target of 550 offences.





The graph below shows the cumulative figure and confirms the achievement of target with the actual figure to date being well within the target figures.

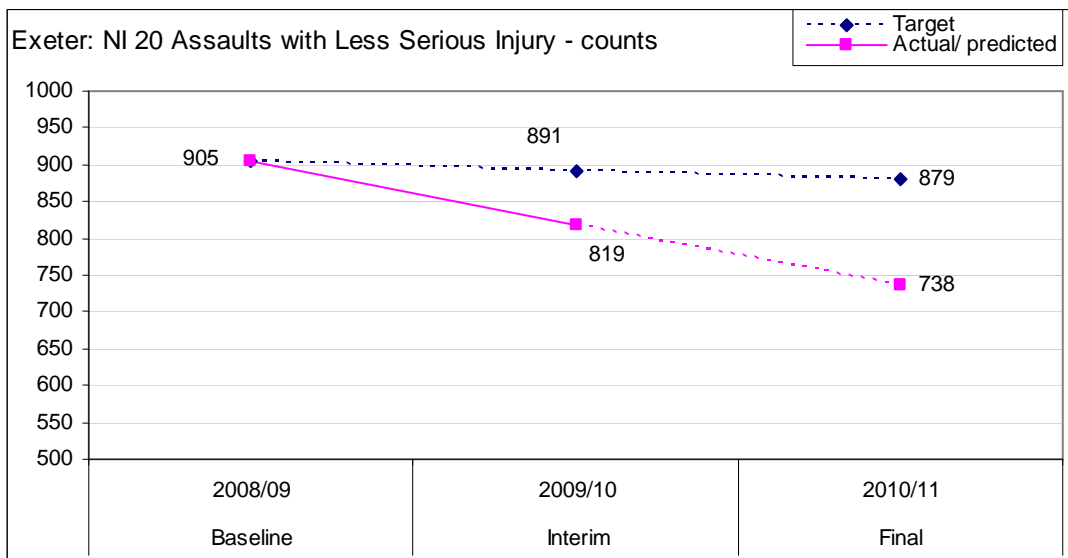
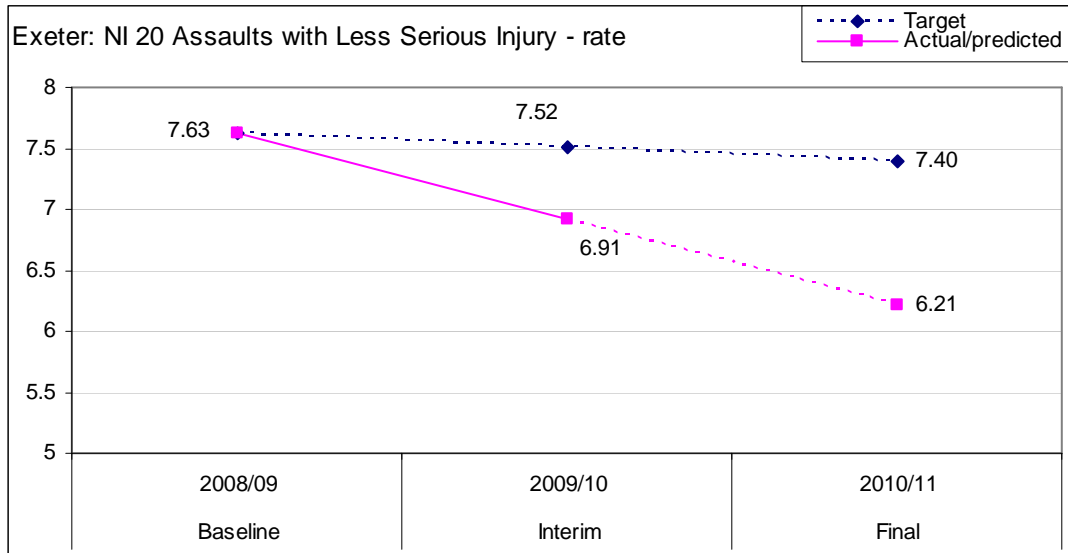


Is Exeter on course to meet its target?

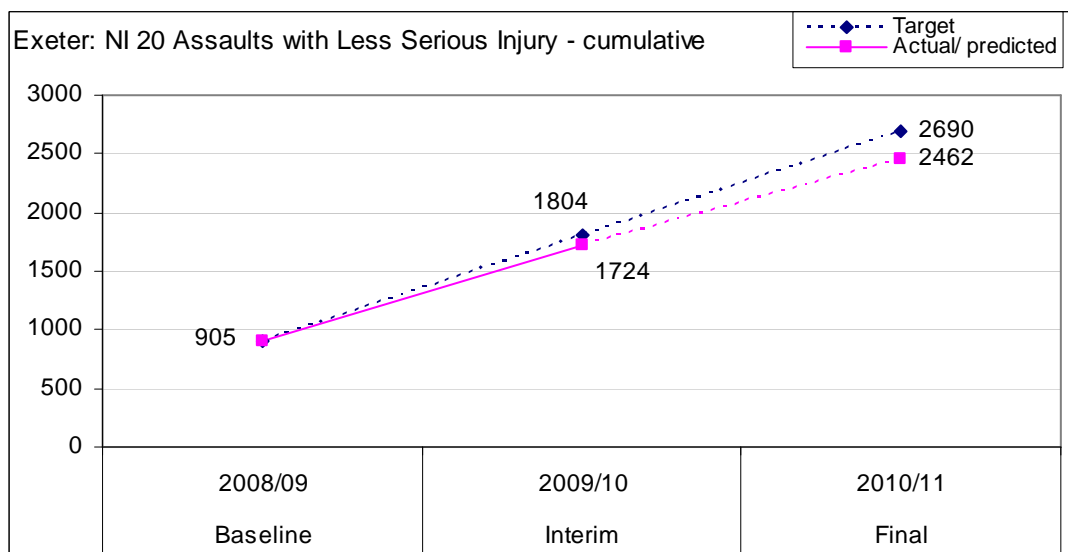
The table below confirms that Exeter is on course to achieve its final target.

NI 20		Baseline 2008/09	Interim 2009/10	Final 2010/11
Old Target	Count	905	899	886
	Rate/ 1000	7.39	7.28	7.17
Revised Target	Count	905	891	879
	Rate/ 1000	7.63	7.52	7.40
Mid Year Estimate		118,600 (2007)	118,500 (2008)	118,800 (2009)
Actual/ (predicted)	Count	905	819	395 (738)
	Rate/ 1000	7.63	6.91	3.32 (6.21)
Target Achieved		-	yes	yes

- The number of offences seen to date in 2010/11 is 395 which leads to a predicted year figure of 738 which is well within the target of 886.
- The corresponding predicted rate of 6.21 offences per 1000 people is also within the target of 7.40.



The graph below shows the cumulative figure and confirms the achievement of target with the actual figure to date being well within the target figures.

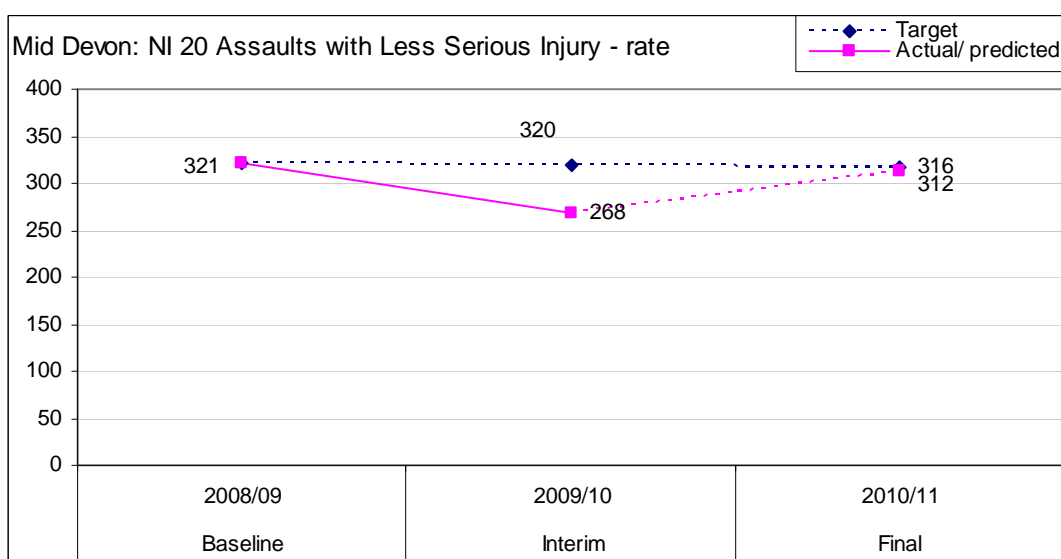
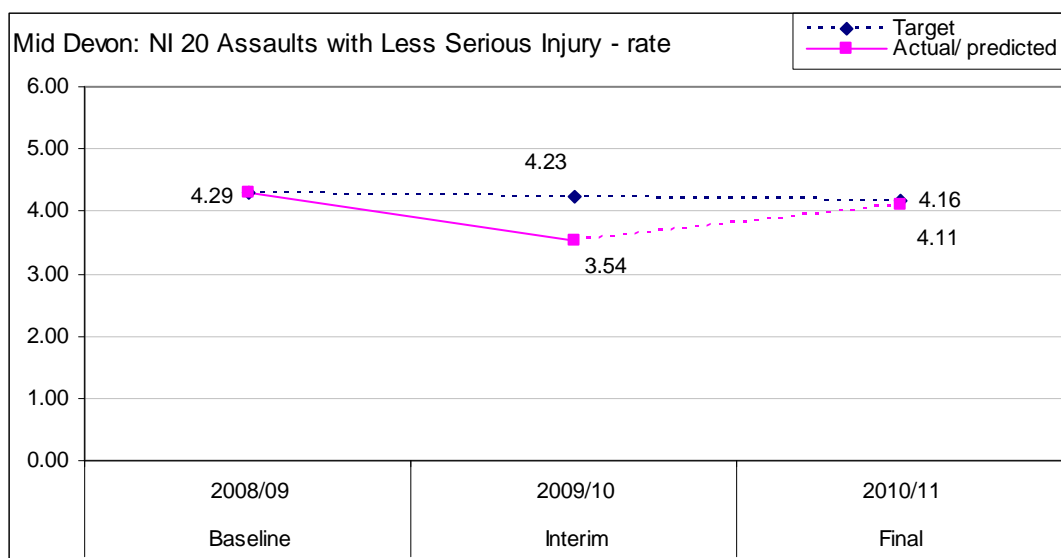


Is Mid Devon on course to meet its target?

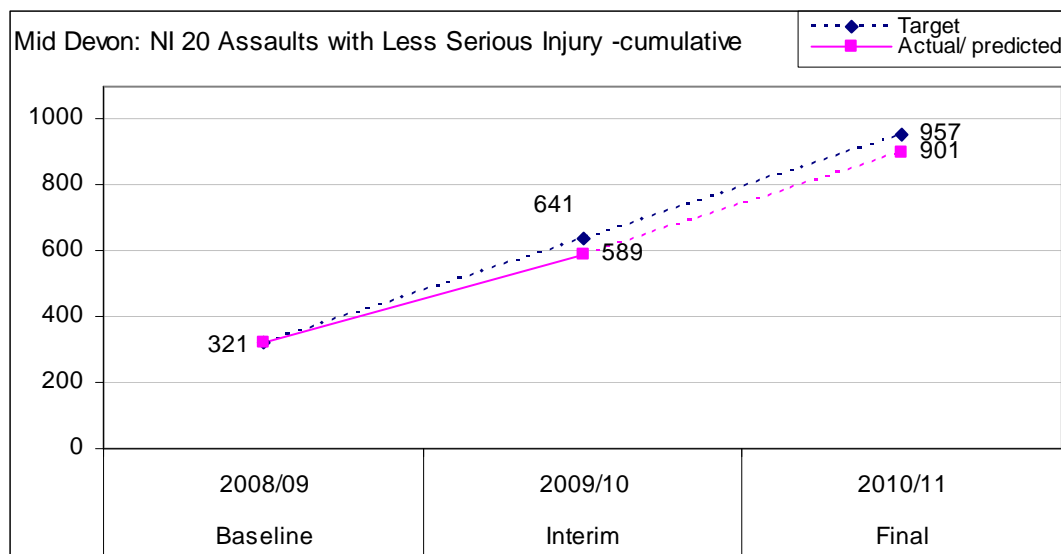
The table below confirms that Mid Devon is on course to achieve its final target.

NI 20		Baseline 2008/09	Interim 2009/10	Final 2010/11
Old Target	Count	321	320	315
	Rate/ 1000	4.23	4.17	4.10
Revised Target	Count	321	320	316
	Rate/ 1000	4.29	4.23	4.16
Mid Year Estimate		74,800 (2007)	75,600 (2008)	76,000 (2009)
Actual/ (predicted)	Count	321	268	163 (312)
	Rate/ 1000	4.29	3.54	2.14 (4.11)
Mid Year Estimate		-	yes	yes

- The number of offences seen to date in 2010/11 is 163 which leads to a predicted year figure of 312 which is well within the target of 315.
- The corresponding predicted rate of 3.71 offences per 1000 people is also within the target of 4.10.



The graph below shows the cumulative figure and confirms the achievement of target with the actual figure to date being well within the target figures.

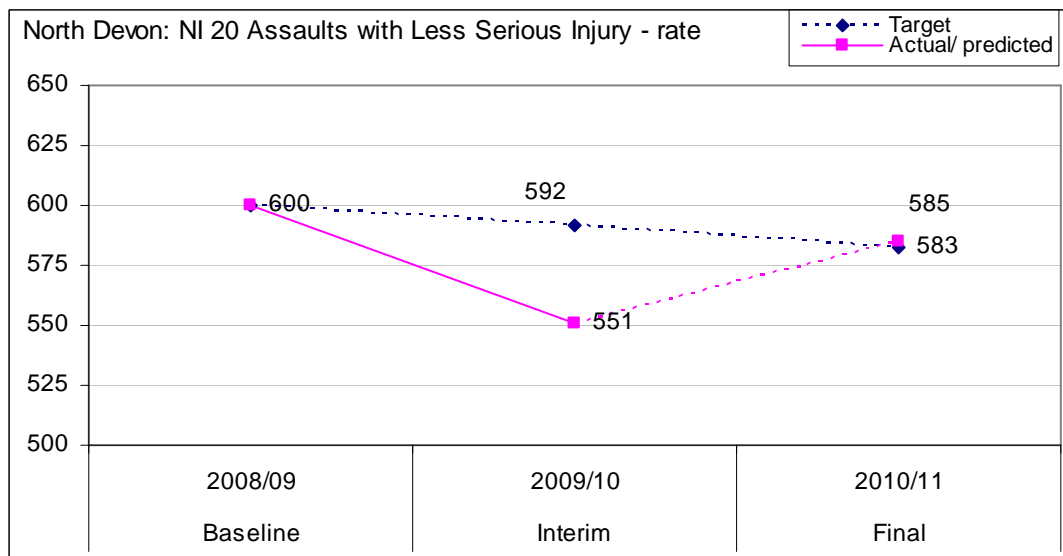
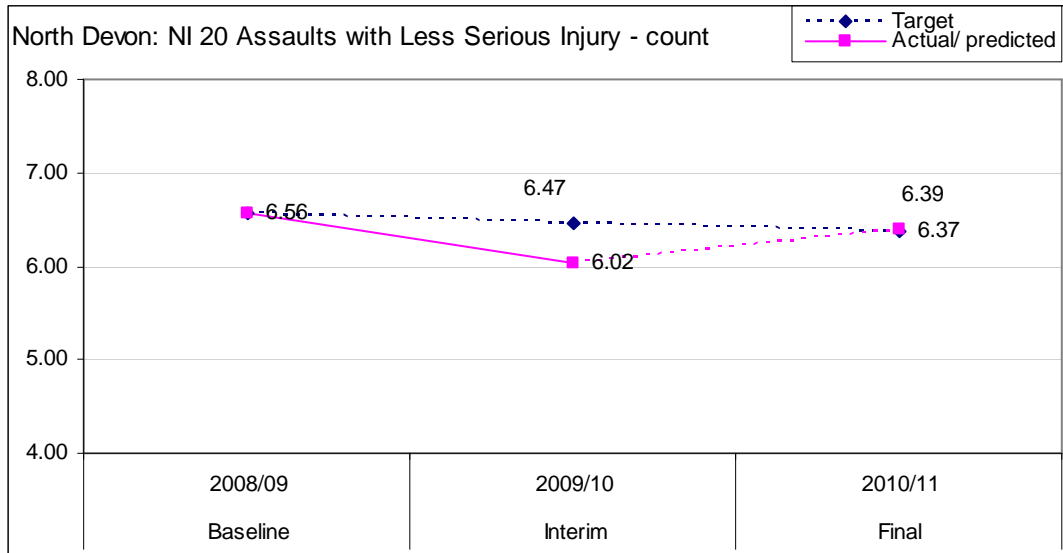


Is North Devon on course to meet its target?

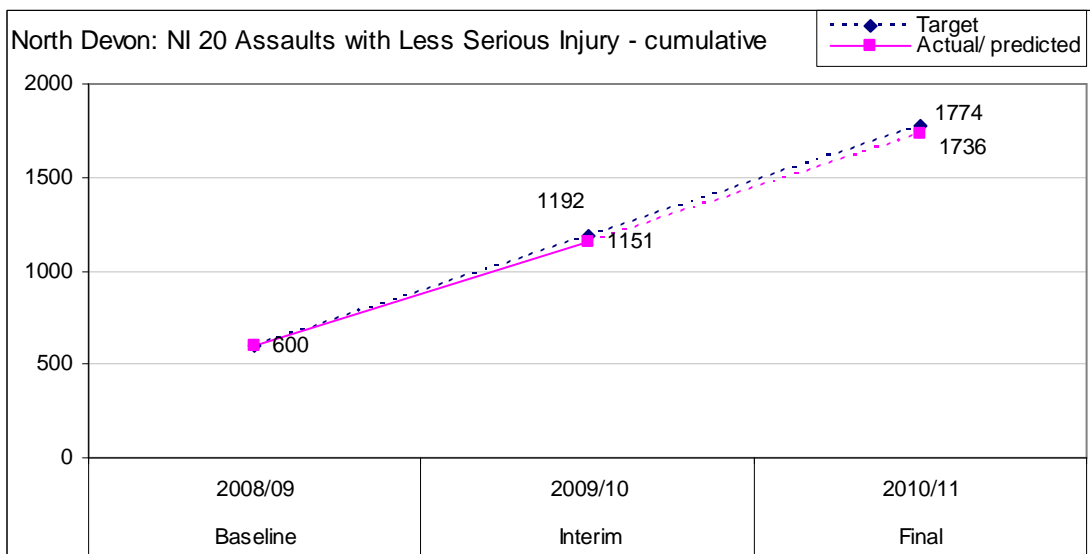
The table below shows that North Devon is on course to fail its final target.

NI 20		Baseline 2008/09	Interim 2009/10	Final 2010/11
Old Target	Count	600	592	583
	Rate/1000	6.51	6.42	6.32
Revised Target	Count	600	592	583
	Rate/ 1000	6.56	6.47	6.37
Mid Year Estimate		91,400 (2007)	91,500 (2008)	91,500 (2009)
Actual/ (predicted)	Count	600	551	318 (585)
	Rate/ 1000	6.56	6.02	3.48 (6.39)
Target Achieved		-	yes	no

- The number of offences seen to date in 2010/11 is 318 which leads to a predicted year figure of 585 which is just outside the target of 583 though a decrease on 2009/10.
- The corresponding predicted rate of 6.39 offences per 1000 people is also just outside the target of 6.37 but is a rise on last year.



The graph below shows the cumulative figure and shows that despite the failure of the target in the final year the achievement in 2009/10 has meant that cumulatively the target has been met.

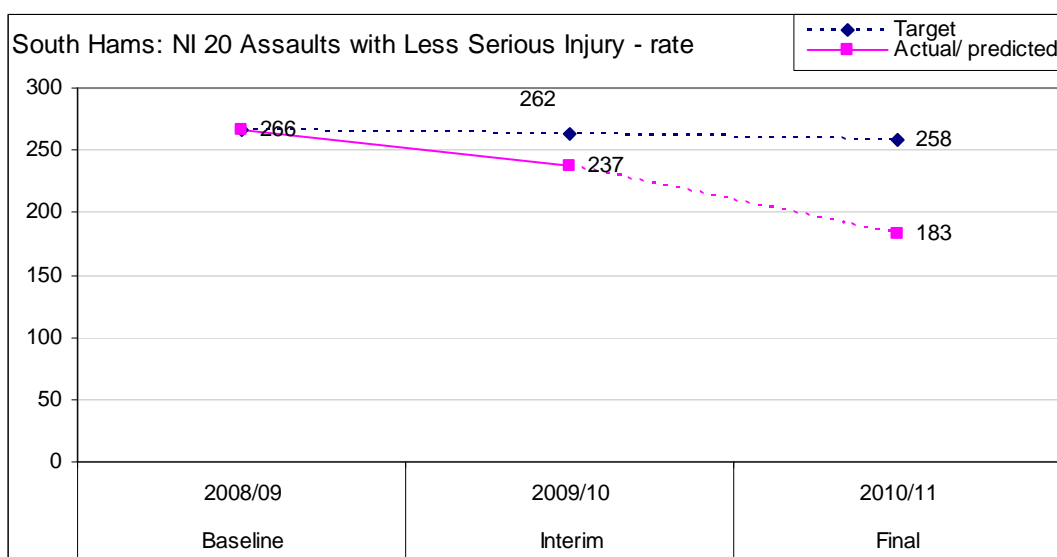
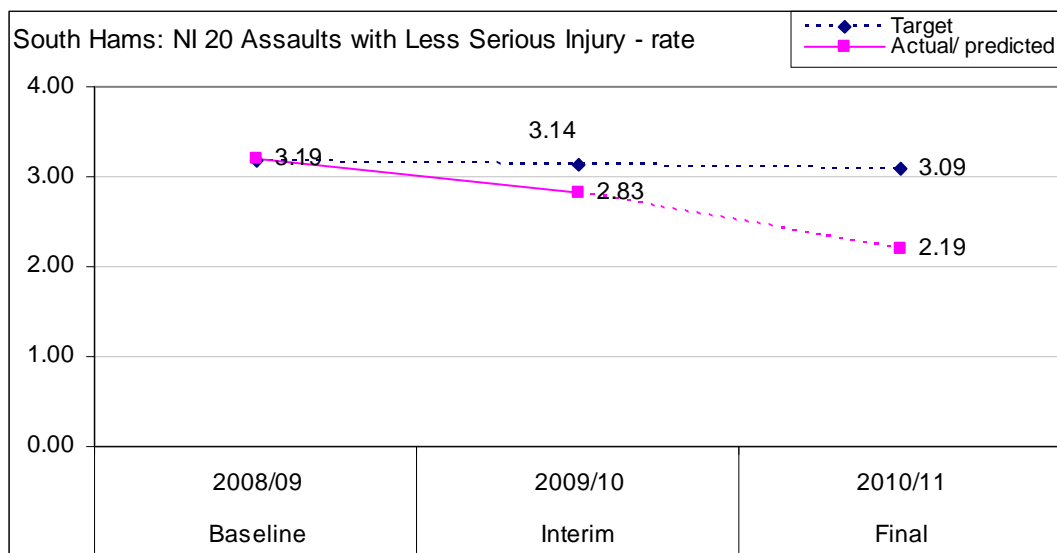


Is South Hams on course to meet its target?

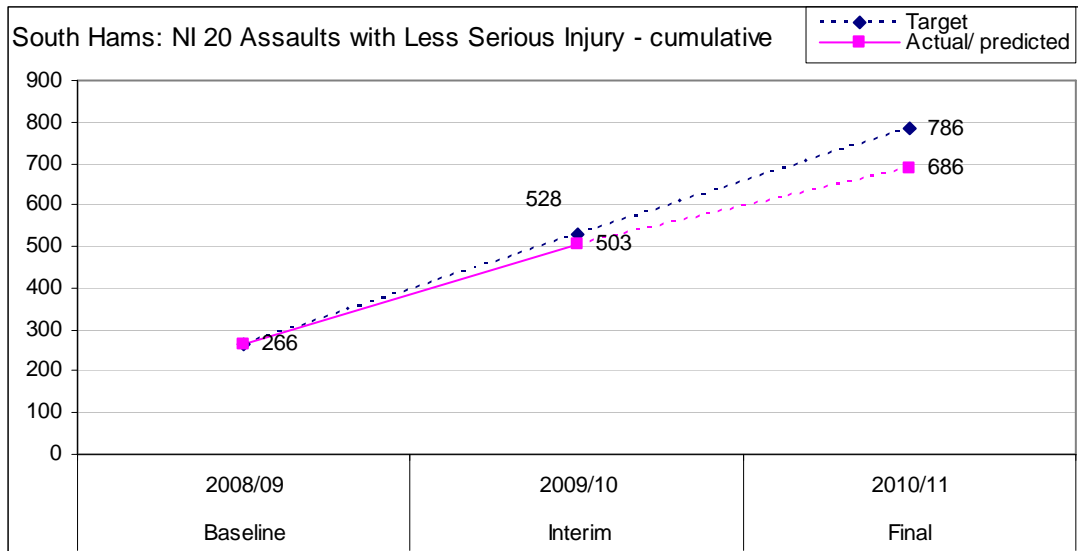
The table below confirms that South Hams is on course to achieve its final target.

NI 20		Baseline 2008/09	Interim 2009/10	Final 2010/11
Old Target	Count	266	262	258
	Rate/1000	3.19	3.14	3.09
New Target	Count	266	262	258
	Rate/1000	3.19	3.14	3.09
Mid Year Estimate		83,500	83,600	83,500
Actual/ predicted	Count	266	237	102 (183)
	Rate/ 1000	3.19	2.83	1.22 (2.19)
Target Achieved		-	Yes	yes

- The number of offences seen to date in 2010/11 is 102 which leads to a predicted year figure of 183 which is well within the target of 258.
- The corresponding predicted rate of 2.19 offences per 1000 people is also within the target of 3.09.



The graph below shows the cumulative figure and confirms the achievement of target with the actual figure to date being well within the target figures.

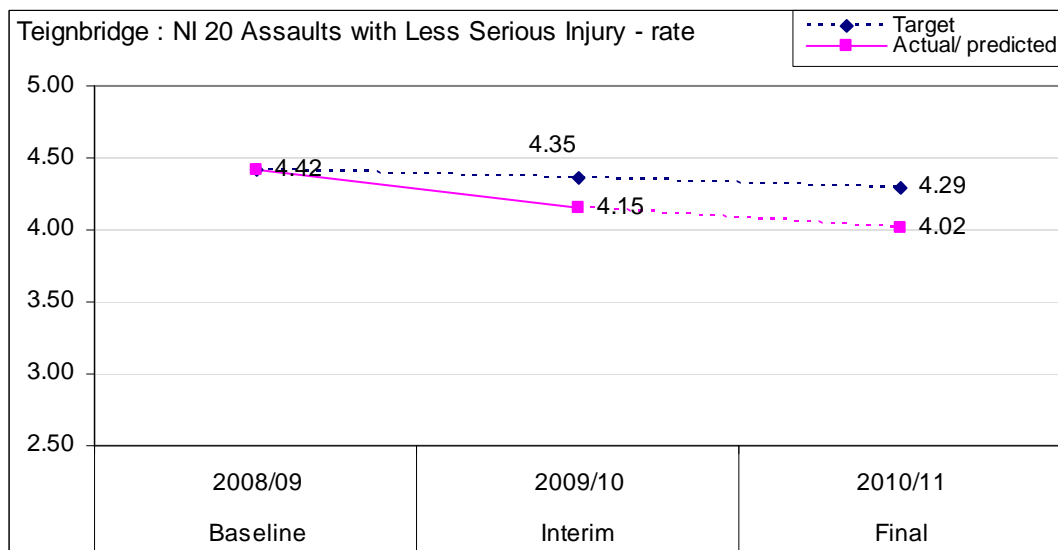


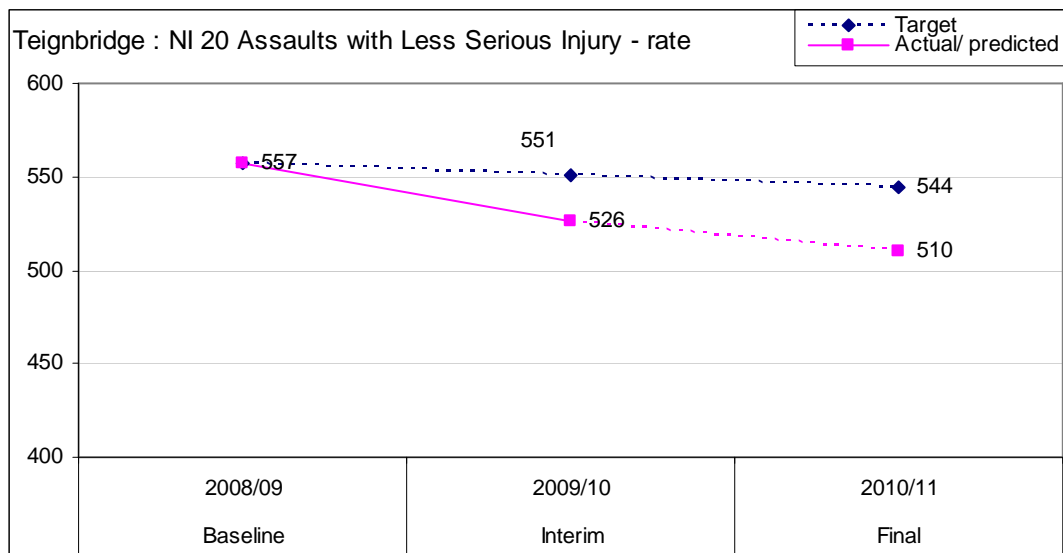
Is Teignbridge on course to meet its target?

The table below confirms that Teignbridge is on course to achieve its final target.

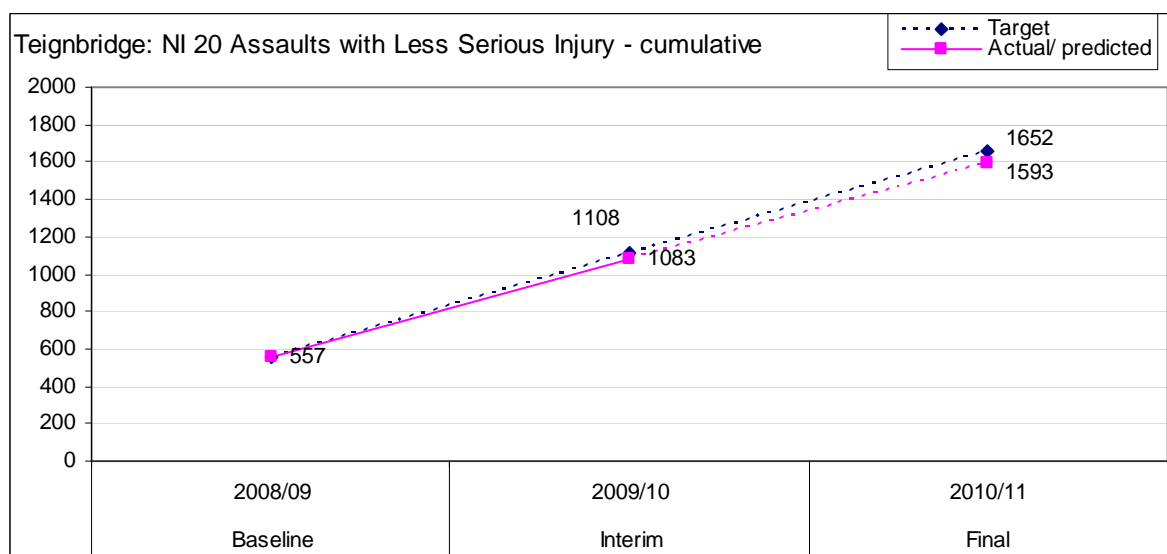
NI 20		Baseline 2008/09	Interim 2009/10	Final 2010/11
Old Target	Count	557	552	544
	Rate/1000	4.39	4.33	4.26
New Target	Count	557	551	544
	Rate/1000	4.42	4.35	4.29
Mid Year Estimate		126,000	126,600	126,900
Actual/ (predicted)	Count	557	526	271 (510)
	Rate/ 1000	4.42	4.15	2.14(4.02)
Target Achieved		-	Yes	yes

- The number of offences seen to date in 2010/11 is 271 which leads to a predicted year figure of 510 which is well within the target of 544.
- The corresponding predicted rate of 4.02 offences per 1000 people is also within the target of 4.29.





The graph below shows the cumulative figure and confirms the achievement of target with the actual figure to date being well within the target figures.

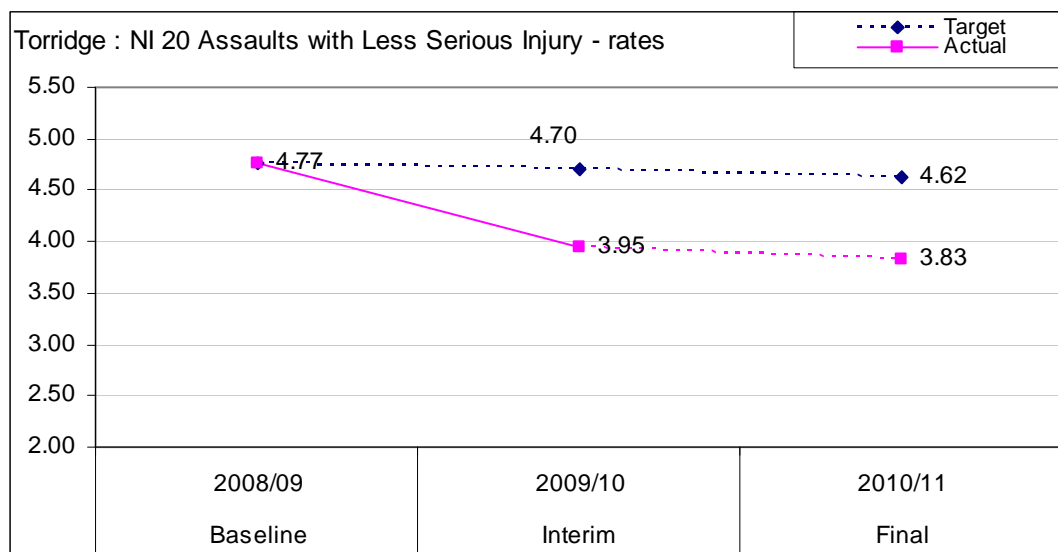


Is Torridge on course to meet its target?

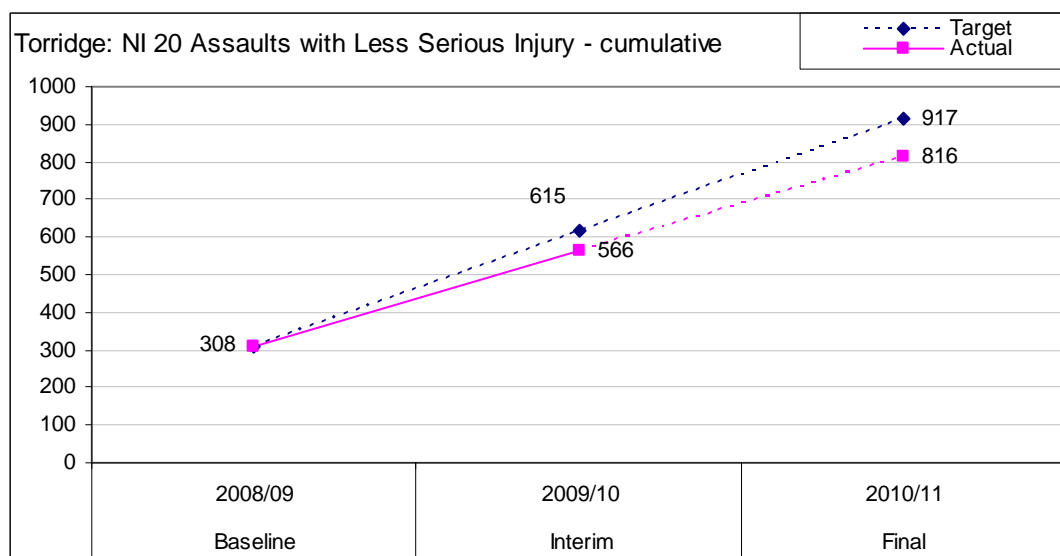
The table below confirms that Torridge is on course to achieve its final target.

NI 20		Baseline 2008/09	Interim 2009/10	Final 2010/11
Old Target	Count	308	306	302
	Rate/1000	4.74	4.67	4.60
New Target	Count	308	307	302
	Rate/1000	4.77	4.70	4.62
Mid Year Estimate		64,600	65,300	65,300
Actual	Count	308	258	132 (250)
	Rate/ 1000	4.77	3.95	2.02 (3.83)
Target Achieved		-	yes	yes

- The number of offences to date in 2010/11 is 132 which leads to a predicted figure of 250 for the year which is well within the target.
- The corresponding rate of 2.02 offences per 1000 people leads to a predicted rate for the year of 3.83 which is again well within the target.



The graph below shows the cumulative figure and confirms the achievement of target with the actual figure to date being well within the target figures.

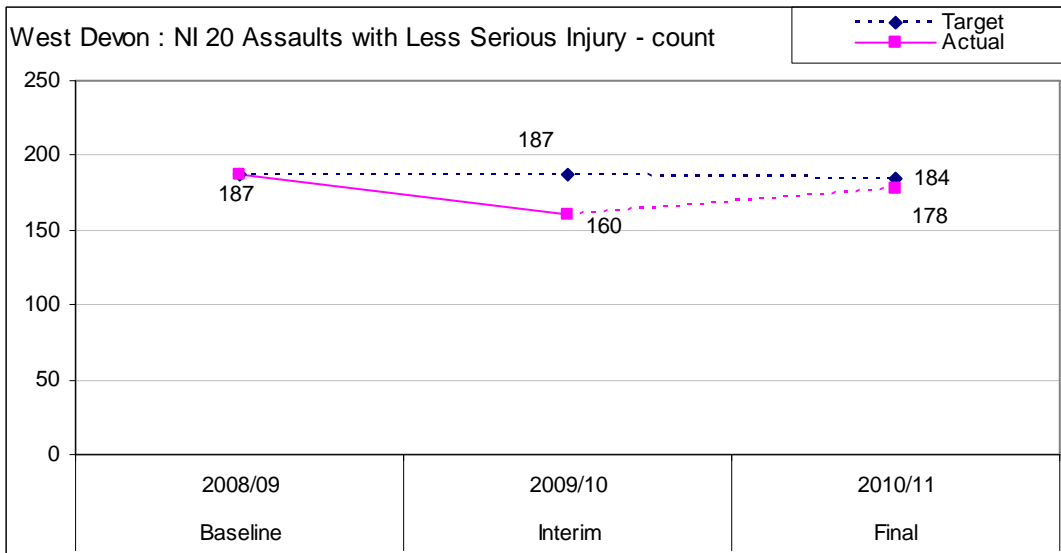
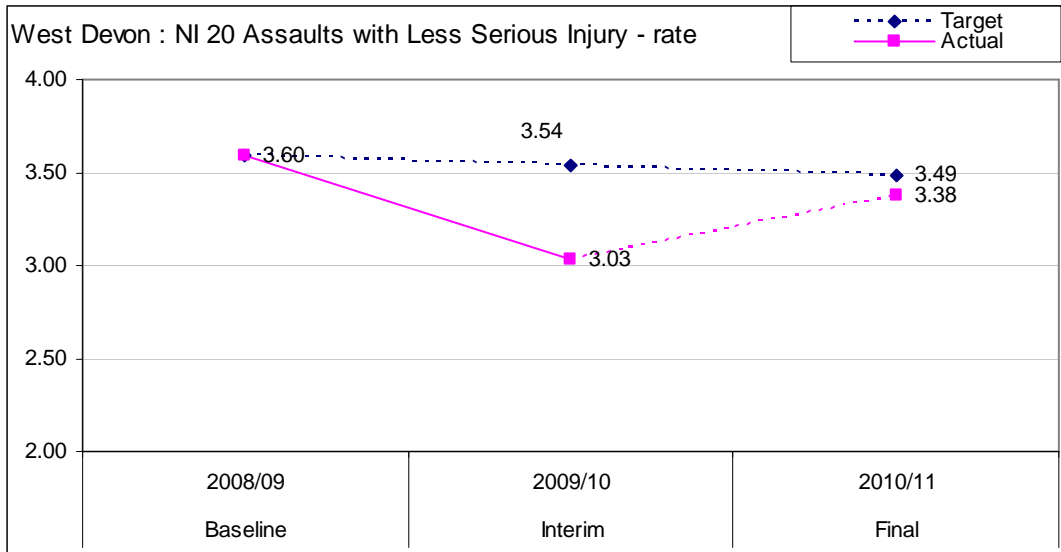


Is West Devon on course to meet its target?

The table below confirms that West Devon is on course to achieve its final target.

NI 20		Baseline 2008/09	Interim 2009/10	Final 2010/11
Old Target	Count	187	187	184
	Rate/1000	3.59	3.54	3.48
New Target	Count	187	187	184
	Rate/1000	3.60	3.54	3.49
Mid Year Estimates		52,000	52,800	52,700
Actual	Count	187	160	95 (178)
	Rate/ 1000	3.60	3.03	1.80 (3.38)
Mid Year Estimates		-	Yes	yes

- The number of offences seen to date in 2010/11 is 95 which leads to a prediction for the year of 178 which is well within the target of 184.
- The corresponding predicted rate for the year of 3.38 offences per 1000 people is also within the target of 3.48.



The graph below shows the cumulative figure and confirms the achievement of target with the actual figure to date being well within the target figures.

