

## Local Area Agreement 2008-2011

**06 July 2010**

**Priority** Health and Wellbeing

**Outcome** Promote health and reduce health inequalities (LAA30).

**Lead Contact:** Ian Tearle - NHS Devon

**RAG Status:** Amber

**Review:** Quarter 1 Programme Review 2010-11

**Recommendations**

**Summary Statement**

Data for breastfeeding and smoking not due until mid August. Other data collected annually. No change to status

**Key to Performance Status:**

Status No Data Milestone Missed Red Amber Green Completed

Projects			
Promote health & reduce health inequalities (LAA-HH30)		Green	Responsible Officer: Ian Tearle - NHS Devon
Date	Milestone/Outputs Expected	Achieved/Review	
12/04/2010	Plans produced and agreed with local Health and Wellbeing groups supporting the Local strategic Partnership	Missed. Drafts in production and due to go to Health and wellbeing Groups May 2010	
12/04/2010	Strategies produced with implementation plan for the recommendations	Missed. Draft strategies produced but work ongoing on implementation plans	
06/07/2010	Plans produced and agreed with local Health and Wellbeing groups supporting the Local strategic Partnership	Draft Local Health Improvement Plans produced and being endorsed by Locality Health and Wellbeing groups by July 31st 2010	
06/07/2010	Strategies produced with implementation plan for the recommendations	Strategies produced and endorsed by the Stronger Communities and Health Improvement Group. Implementation plan for healthy eating produced. Physical activity implementation plan due July 31st 2010.	
30/09/2010	Draft Rural Health and Wellbeing Strategy out for consultation - feedback due by August 19th 2010. Implementation plan to be produced by September 30th 2010.		
31/03/2011	Project End		

**Key to Performance Status:**

Performance Indicators: No Data Well Below Target Below Target On Target Above Target Well Above Target

**Key to change on same period in previous year:**

↑ Improved Performance ↓ Worse Performance ↔ Unchanged

**Key to +/- Column:**

+ Higher figures are better - Lower figures are better OFF Direction cannot be determined.

Performance Indicators								
Code	Title	+/-	Instance	Annual Target	Status	Improvement	Actual to Date	Officer Notes
NI 53a	Percentage of infants being breastfed at 6-8 wks from birth	+	FY 2008-09	50.1%	Well Below Target	n/a	47.1%	
		+	FY 2009-10	51.2%	Below Target	↑	48.8%	(Quarter 2) Data due on The Hub - December 2009 (PB)
		+	FY 2010-11	52.1%	Data not due		n/a	
NI 53b	Percentage of infants for whom breastfeeding status is recorded at 6-8	+	FY 2008-09	85.0%	Well Above Target	n/a	90.6%	

Performance Indicators								
Code	Title	+/-	Instance	Annual Target	Status	Improvement	Actual to Date	Officer Notes
	wks from birth							
		+	FY 2009-10	90.0%	Above Target	↑	93.5%	(Quarter 2) Data due on The Hub - December 2009 Data not published for DCC (PB)
		+	FY 2010-11	95.1%	Data not due		n/a	
NI 123	<b>Stopping smoking</b>	+	FY 2007-08		No Target	↑	903	
		+	FY 2008-09		No Target	↓	691	
		+	FY 2009-10	668	Well Below Target	↑	362 (3/4)	(Quarter 3) Performance for the year to the end of December 2009 was 362 compared to the target for the end of that period of 501. Although short of target this was slightly better performance than the same period in the previous year. (KB)
		+	FY 2010-11	668	Data not entered			
NI 123a	<b>Stopping smoking (raw numbers)</b>	+	FY 2009-10	4,278	Well Below Target	n/a	2,887 (3/4)	(Quarter 1 - 4) Quarter 4 data available in June 2010 (LG)
		+	FY 2010-11	4,336	Data not entered			
NI 120b	<b>All-age all cause mortality rate - Male (per 100,000 pop.)</b>	-	2008	584.00	Below Target	↑	585.35	(2008) Final figures show there has been a 4% overall improvement in the male mortality rate from 2007 to 2008. Slight increases in Mid Devon, North Devon, Torridge and West Devon were offset by significant improvements in East Devon and Exeter resulting in being only 0.2% off target. Overall mortality rate (male and female combined) showed a slight improvement owing to the greater impact of the improvement to the higher male mortality rate. (KB)
		-	2009	568.00	Data not entered			(2009) Annual figure is still not available. Provisional figures should be available late August, final by November/December (Simon Chant, Public Health). (TP)
		-	2010	552.00	Data not due	n/a	n/a	
		-	2011		Data not due	n/a	n/a	

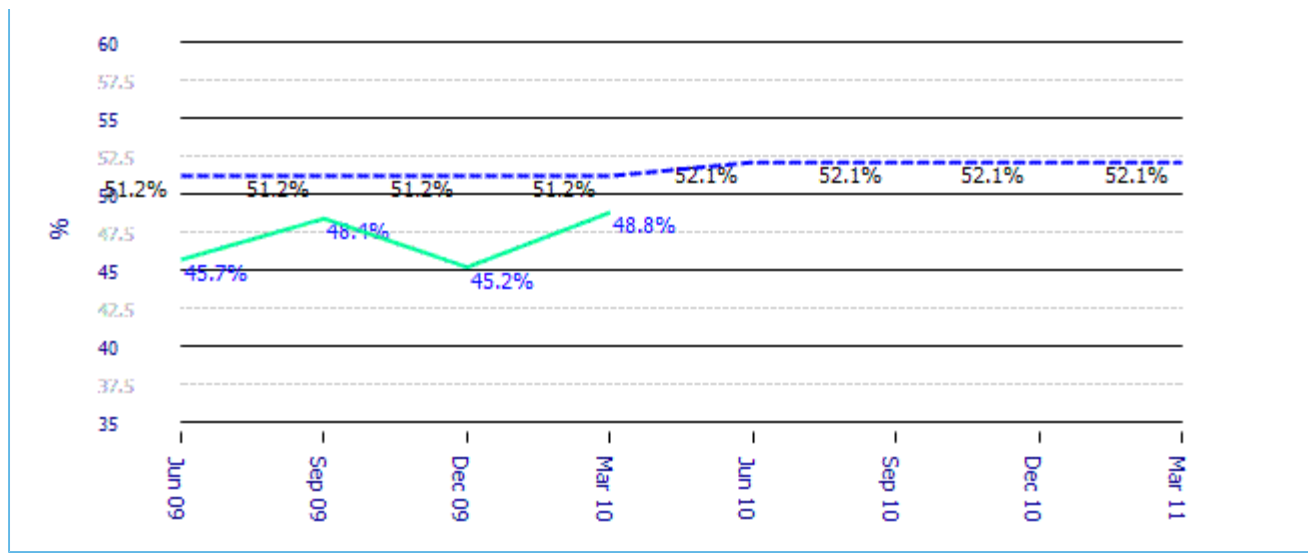
**District 2008**

Area	Actual	Status
East Devon	500.10	No Target
Exeter	626.93	No Target
Mid Devon	588.39	No Target
North Devon	670.60	No Target
South Hams	607.97	No Target

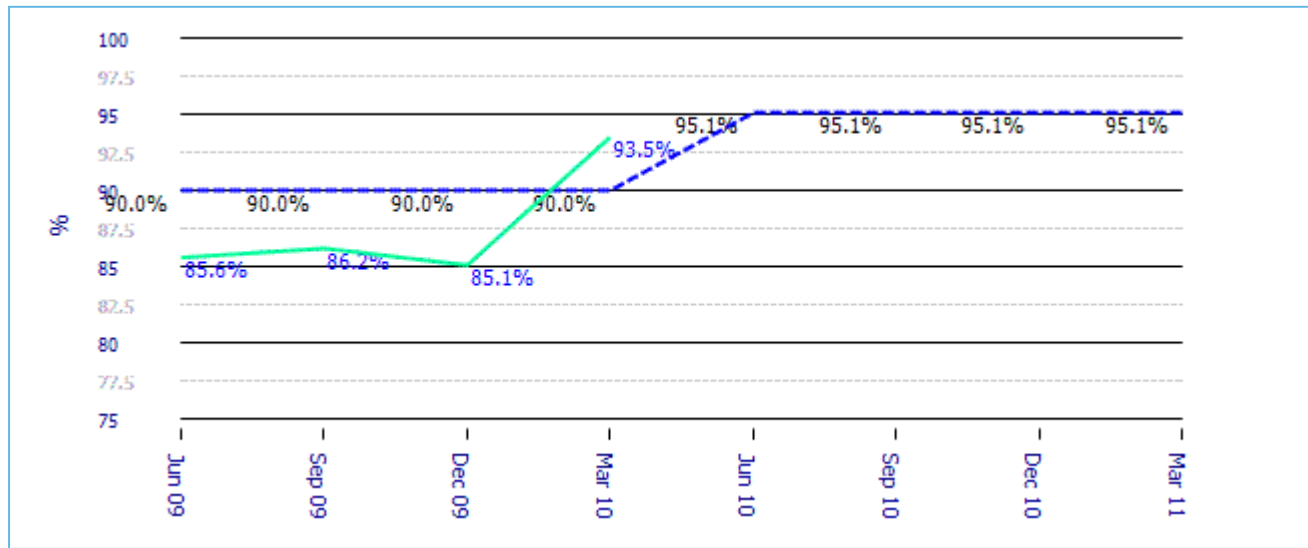
Performance Indicators								
Code	Title	+/-	Instance	Annual Target	Status	Improvement	Actual to Date	Officer Notes
				<b>Area</b>	<b>Actual</b>	<b>Status</b>		
				Teignbridge		581.28	No Target	
				Torrige		586.54	No Target	
				West Devon		642.42	No Target	
NI 120a	<b>All-age all cause mortality rate - Female (per 100,000 pop.)</b>	-	2008	411.00	Below Target	↓	429.93	(2008) Final figures show there has been an overall 2.8% deterioration in the female mortality rate from 2007 to 2008. There was increased female mortality in all but two District areas (East Devon and South Hams, the latter showing a significant improvement), resulting in being 4.6% off target. (KB)
		-	2009	402.00	Data not entered			(2009) Annual figure is still not available. Provisional figures should be available late August, final by November/December (Simon Chant, Public Health). (TP)
		-	2010	393.00	Data not due	n/a	n/a	
		-	2011		Data not due	n/a	n/a	
<b>District 2008</b>								
				<b>Area</b>	<b>Actual</b>	<b>Status</b>		
				East Devon		411.65	No Target	
				Exeter		470.31	No Target	
				Mid Devon		434.14	No Target	
				North Devon		440.89	No Target	
				South Hams		384.11	No Target	
				Teignbridge		440.83	No Target	
				Torrige		463.52	No Target	
				West Devon		425.28	No Target	
NI 56d	<b>Percentage of children in Year 6 with height and weight recorded who are obese</b>	-	AY 2007-08	16.4%	Well Above Target	↑	14.2%	(2007 - 2008) Provisional data 14.18 LAIT Nov 2009 - Devon's performance in this NI is in the top quartile. (RB)
		-	AY 2008-09	17.1%	Well Above Target	↓	16.1%	(2008 - 2009) While 1% better than target this is also worse by 1.9% than the previous year, roughly in line with forecasts. To achieve the LAA target now requires at least 1% reduction in Year 6 obesity in 2009/10. (KB)
		-	AY 2009-10	15.1%	Data not due	n/a	n/a	
NI 56e	<b>Percentage of children in Year 6 with height and weight recorded</b>	+	AY 2008-09	85.9%	Above Target	n/a	87.5%	
		+	AY 2009-10	86.4%	Data not due	n/a	n/a	

**NI 53a - Percentage of infants being breastfed at 6-8 wks from birth**

--



NI 53b - Percentage of infants for whom breastfeeding status is recorded at 6-8 wks from birth



**Key to Performance Status:**

Risks: Review overdue (0+) Very high (20+) High (12+) Medium (8+) Low (1+)

**Risks**

Code	Title	Review Date	Risk Impact	Risk Likelihood	Status	Notes
LAA 30 Risk 1	<b>Entrenched smokers unwilling to quit or access the service</b>	06/07/2010	4 - Major	3 - Possible/Probable	High (12)	Increased capacity in specialist service in place but quitter target still remains challenging.
LAA 30 Risk 2	<b>Failure to record breastfeeding status</b>	06/07/2010	3 - Moderate	3 - Possible/Probable	Medium (9)	